

# Overall student visa trends February 2017



## International student

International student- Students who are non-residents of New Zealand and Australia who:

- Have entered into New Zealand expressly with the intention to study
- Have enrolled in a New Zealand provider offshore, where the educational programme is delivered in-market.

Rule 18 – Rule governing English Language requirements for certain international students. More information about this is available on <http://www.nzqa.govt.nz/about-us/our-role/legislation/nzqa-rules/nzqf-related-rules/programme-approval-and-accreditation/8/18/>  
Section 61 – visas issued to people who are currently in New Zealand outside of Immigration NZ policy.

## Scope of this document

- This dashboard excludes dependants, applicants under Section 61, and applications for variation of conditions.
- There is a potential delay between students having their visas approved and their actual entry into New Zealand, therefore the figures shown here may not necessarily represent the actual number of students currently in New Zealand.

The student visa dashboard does not include all international students:

- Student visas only capture students who enter New Zealand with a student visa. These students are mostly those who are planning to study for more than three months.
- Students who undertake a course less than three months in duration are not required to enter on a student visa. Students who do choose to enter on a visitor visa (usually from visa-free nationalities) are not captured in this dashboard.
- Working holiday visas allow students to study for up to six months. Those who enter NZ on a working holiday visa and plan on taking up this option are not included in this dashboard. These factors will affect private training establishments (PTE) numbers.

# Acronyms

---

## Acronyms

FSV – First-time student visas – The number of visas issued to students for the first time. Visas for dependants and section 61 applicants are excluded since these people do not fall under the definition of international students.

RSV – Returning student visas – The number of visas issued to students subsequent to the first issuing of visas. Visas for dependants and section 61 applicants do not fall under the definition of international students.

TSV- Total student visas – The number of visas issued to students, either for the first time, or after the first time. Declined visas are not included. Visas for dependants and section 61 applicants are excluded since these people do not fall under the definition of international students.

VSV- Valid Student visas – the number of people holding a student visa and/or permit at the beginning of each calendar month. Visas for dependants are excluded. The presented figures can be interpreted as the number per month of international students with authority to study in a course of three or greater months in duration. This does not mean that these students are present in New Zealand for the entire duration of their visa.

YTD – Year-to-date

## Sectors

ITP- Institutes of Technology and Polytechnics

PTE- Private Training Establishments, including Private Training Establishments which receive government funding for  
Schools – includes all students in primary, intermediate and secondary schools.

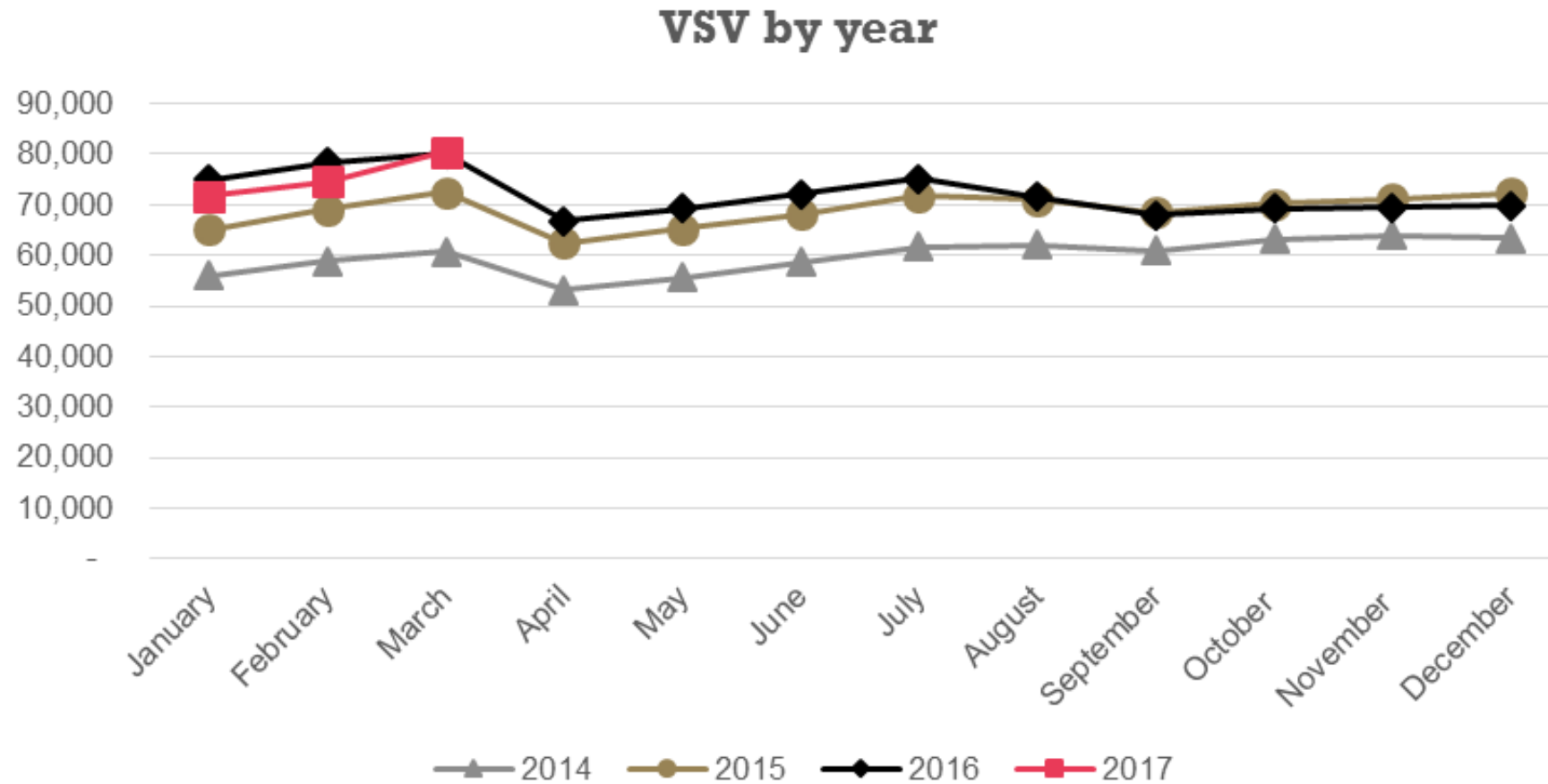
## Additional notes

- Results for YTD this year will be compared to the YTD 2016 unless otherwise stated.
- VSV are being reported on for the first time in this dashboard.

1. TSV for the YTD 2017 increased by 13% (+2,033) compared to the YTD 2016. FSV increased by 8% (+576).
2. TSV for the universities sector increased by 16% (+925), due to an increase in FSV(+27%, +626). The increase in FSV is from the USA (+41%,+224), India (+53%, +131), and Viet Nam (+177%, +69) markets, while the increase in RSV is from China (+13%, +270).
3. PTE sector TSV increased by 2%(+70) for the YTD 2017, compared to the YTD 2016. RSV increased by 18%(+343). However, FSV had a 10% decrease (-273). This was due to a 51% (-203) decrease in FSV for the India market.
4. TSV for the Schools sector grew by 22% (+618), driven by an increase in FSV for secondary school students from Brazil (+68%, +78), China (+34%, +69) and Chile (+756%, +68).

**Cautionary note: This dashboard presents data for two months. The timeframe used in this dashboard is too brief to draw robust analytical conclusions.**

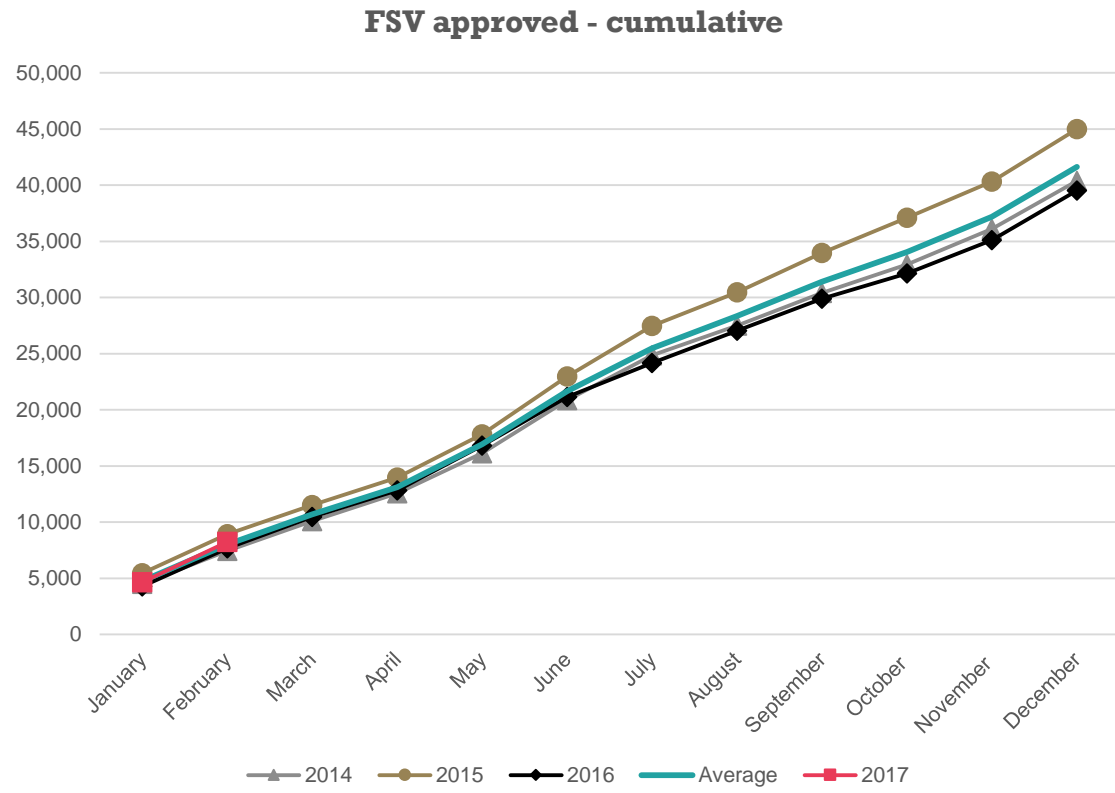
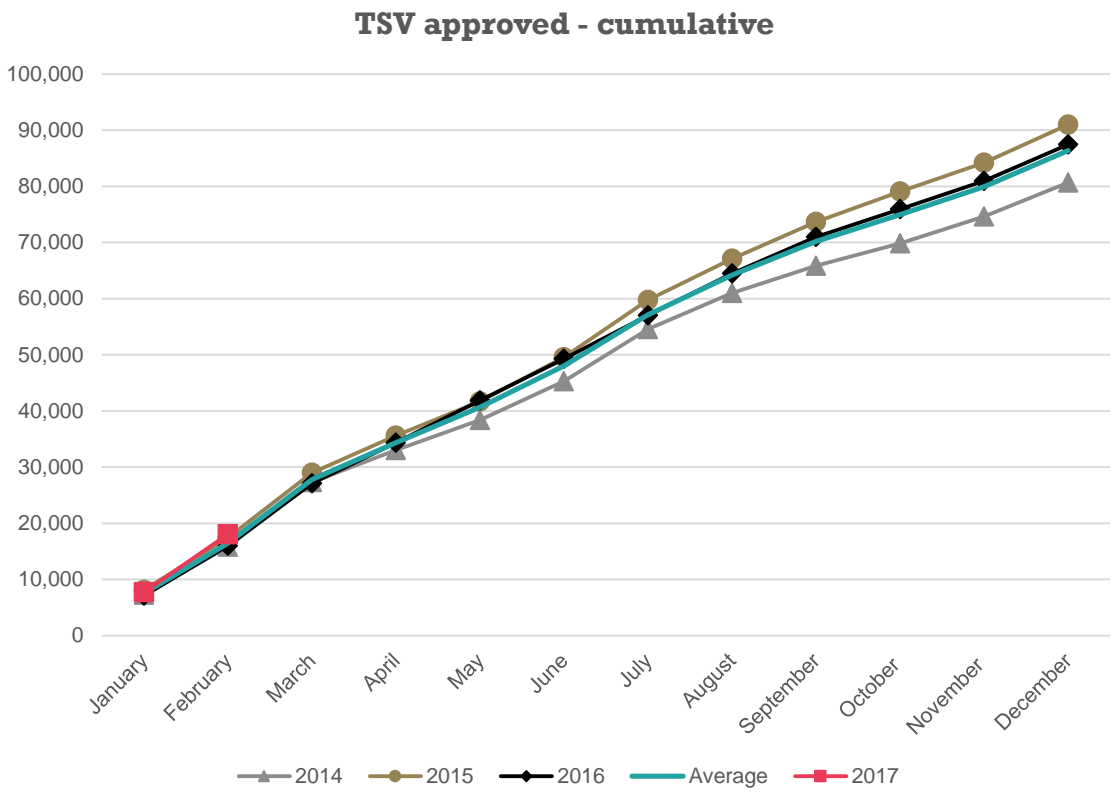
# Valid student visas



For the first time, this dashboard references the valid student visas (VSV), that are being reported. VSV were 80,418 as at 1 March 2017, which were stable compared to 1 March 2016. Historically, VSV reach their highest point in March. Many student visas expire on 31 March, which means a large drop is expected in April.



# Comparison to previous years (Cumulative)



- TSV for February 2017 are up (+16%, +1,427) compared to February 2016.
- FSV for February 2017 have increased (6%, +261) compared to February 2016.
- RSV have increased (+22%, +1,211) compared to February 2016. Many visas expire on 31 March, which means that RSV generally peak in March, but they normally start to increase in February before the March peak.

Trends by market



## In order of appearance:

**South East Asia** includes: Brunei Darussalam, Cambodia, Indonesia, Laos, Malaysia, Myanmar, Philippines, Singapore, Thailand, and Viet Nam.

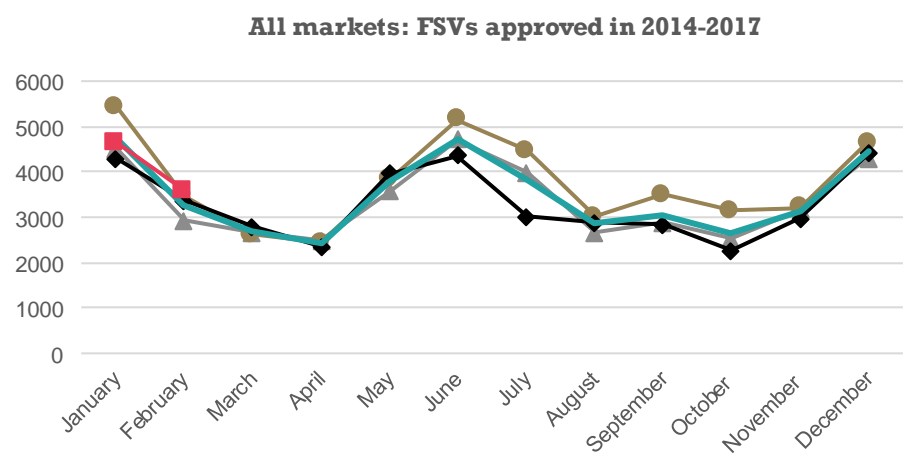
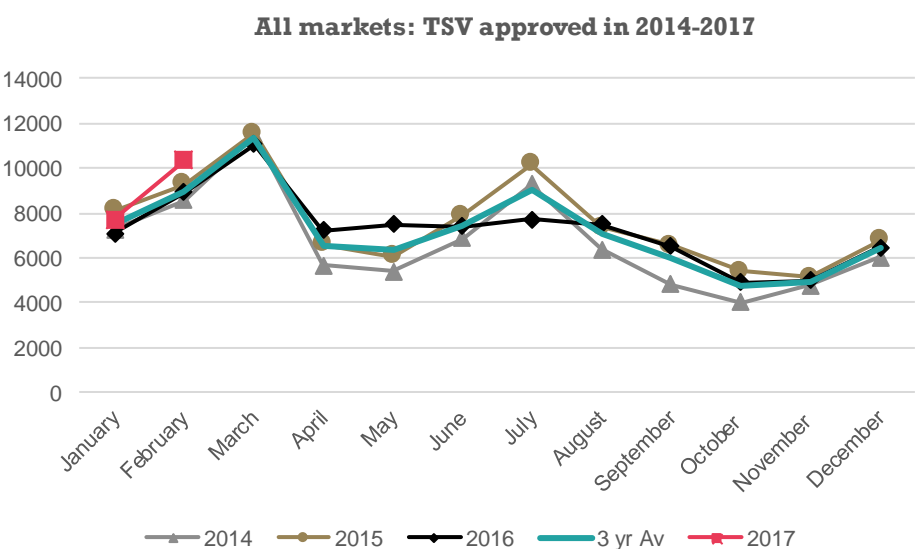
**Latin America** includes: Argentina, Bolivia, Brazil, Chile, Colombia, Ecuador, El Salvador, Guatemala, Mexico, Nicaragua, Panama, Paraguay, Peru, Suriname, Trinidad and Tobago, Turks and Caicos Islands, Uruguay, Venezuela, Cuba, Honduras, St Lucia, Costa Rica, Dominican Republic, Belize, Dominica, St Vincent and the Grenadines, Guyana, and Honduras.

**Europe** includes: Austria, Belarus, Belgium, Bulgaria, Croatia, Czech Republic, Denmark, Estonia, Finland, France, Georgia, Germany, UK, Greece, Hungary, Iceland, Ireland, Italy, Latvia, Liechtenstein, Lithuania, Luxembourg, Macedonia, Netherlands, Norway, Poland, Portugal, Romania, Russia, Serbia, Serbia & Montenegro, Slovakia, Spain, Sweden, Switzerland, Turkey, Ukraine, Yugoslavia, Kosovo, Armenia, Bosnia and Herzegovina, Albania, Andorra, Cyprus, Slovenia, and Monaco.

**Middle East** includes: Bahrain, Iran, Iraq, Israel, Jordan, Kuwait, Lebanon, Libya, Oman, Palestine, Qatar, Saudi Arabia, Syria, United Arab Emirates, and Yemen.



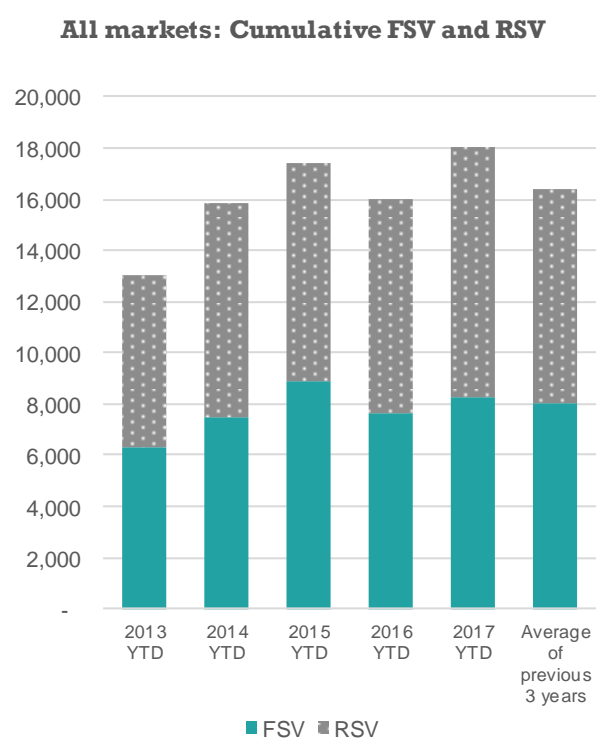
- TSV for the YTD 2017 increased by 13% (+2,033) compared to 2016. FSV increased by 8%(+576) compared to the YTD 2016 and RSV increased by 17% (+1457 ).
- Most of the increase in FSV occurred in the universities (+27%, +626) and schools (+25%, +252) sectors.
- All sectors had increases in RSV with the ITP sector leading the increase (+39%, +444), followed by the schools (+20%, 366), PTE (+18%, +343) and universities (+8%, +299) sectors.
- VSV on March 1 2017 were stable at 80,418 up 350 more on the same date in 2016.



In brief

YTD	FSV	RSV	TSV
Visas	8,246	9,812	18,058
Change No.	576	1,457	2,033
Change Percent	8%	17%	13%

Changes are from the YTD 2016 to the YTD 2017



All markets: TSV by sector (\*)

	2014 YTD	2015 YTD	2016 YTD	2017 YTD	Change Number	Change Percentage
Schools	3,188	3,067	2,789	3,407	618	22%
ITP	2,157	2,912	2,731	3,184	453	17%
PTE	4,603	5,360	4,539	4,609	70	2%
Universities	5,845	5,962	5,869	6,794	925	16%
Total	15,793	17,301	15,928	17,994	2,066	13%

All markets: FSV by sector (\*)

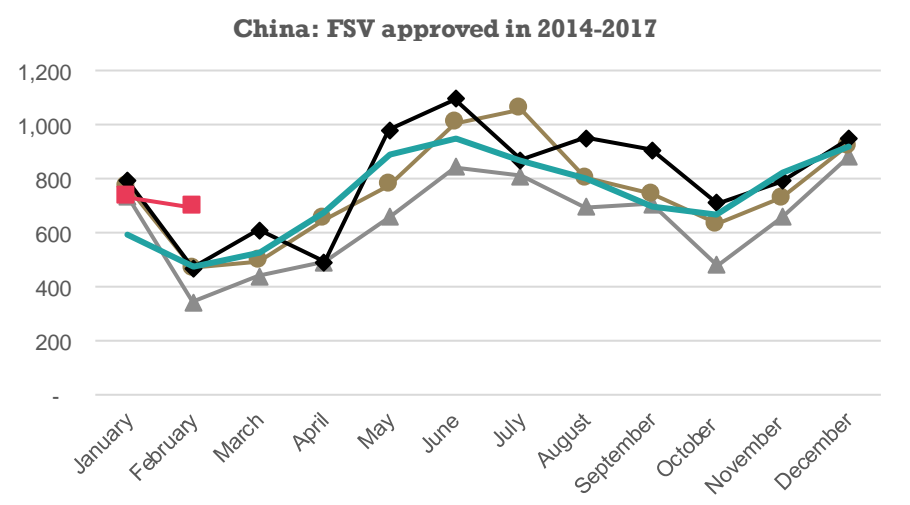
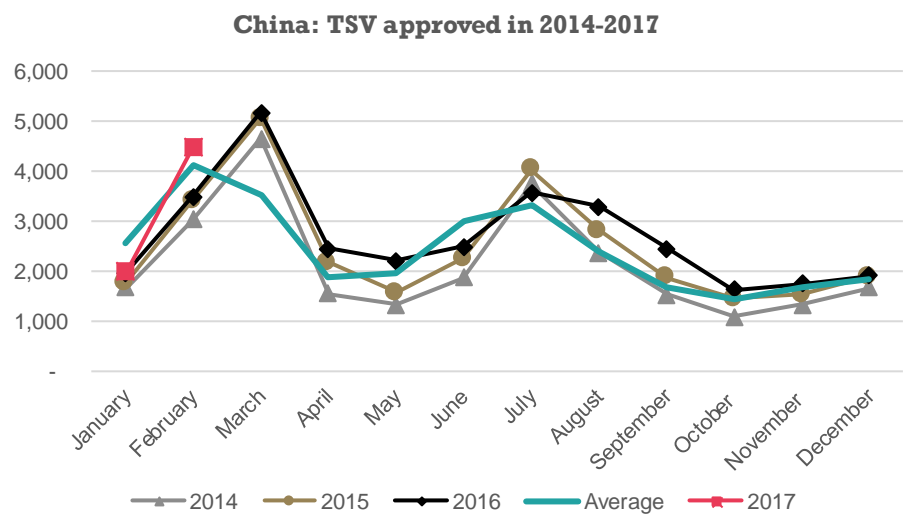
	2014 YTD	2015 YTD	2016 YTD	2017 YTD	Change Number	Change Percentage
Schools	1,212	1,127	994	1,246	252	25%
ITP	1,067	1,722	1,602	1,611	9	1%
PTE	2,862	3,451	2,642	2,369	- 273	-10%
Universities	2,259	2,513	2,337	2,963	626	27%
Total	7,400	8,813	7,575	8,189	614	8%

(\*) Please note that numbers by sector may not always add up to the same as the total because sector is not always stated.

All markets: TSV by region

Region	2014 YTD	2015 YTD	2016 YTD	2017 YTD	Change Number	Change Percentage
Auckland	9,232	10,305	9,268	10,378	1,110	12%
Canterbury	1,831	1,903	1,935	2,265	330	17%
Wellington	1,196	1,291	1,211	1,381	170	14%
Otago	921	949	827	1,016	189	23%
Waikato	809	811	826	912	86	10%
Other	1,855	2,158	1,958	2,106	148	8%
Total	15,844	17,417	16,025	18,058	2,033	13%

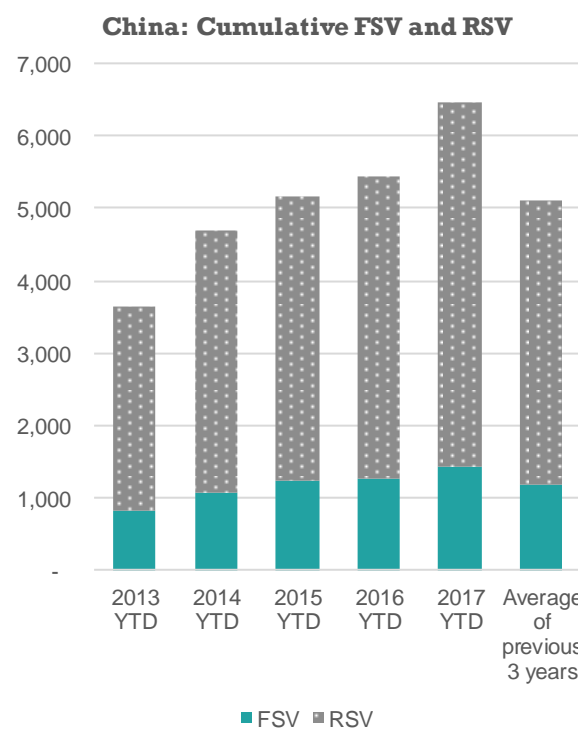
- TSV increased by 19% (+1,015) from the YTD 2016 to the YTD 2017. This was due to an increase in RSV across all sectors, led by the Universities sector (+13%, +270), followed by the ITP (+36%, +222), Schools (+28%, +200) and PTE (+18%, +154) sectors.
- The increase in FSV was led by the Schools sector (+45%, +100).
- VSV for China increased 15% (+3,634) from 1 March 2017 compared to 1 March 2016, and now exceed 27,000.



In brief

YTD	FSV	RSV	TSV
Visas	1,429	5,033	6,462
Change No.	167	848	1,015
Change Percent	13%	20%	19%

Changes are from the YTD 2016 to the YTD 2017



China: TSV by sector (\*)

	2014 YTD	2015 YTD	2016 YTD	2017 YTD	Change Number	Change Percentage
Schools	744	908	928	1,228	300	32%
ITP	771	873	837	1,087	250	30%
PTE	930	1,125	1,241	1,450	209	17%
Universities	2,258	2,270	2,441	2,695	254	10%
Total	4,703	5,176	5,447	6,460	1,013	19%

China: FSV by sector (\*)

	2014 YTD	2015 YTD	2016 YTD	2017 YTD	Change Number	Change Percentage
Schools	194	249	224	324	100	45%
ITP	171	199	214	242	28	13%
PTE	282	363	392	447	55	14%
Universities	432	429	432	416	-16	-4%
Total	1,079	1,240	1,262	1,429	167	13%

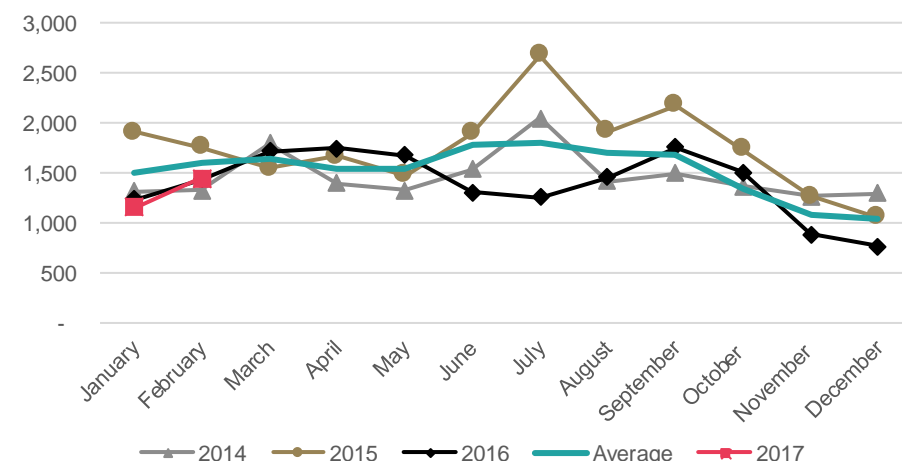
(\*) Please note that numbers by sector may not always add up to the same as the total because sector is not always stated.

China: TSV by region

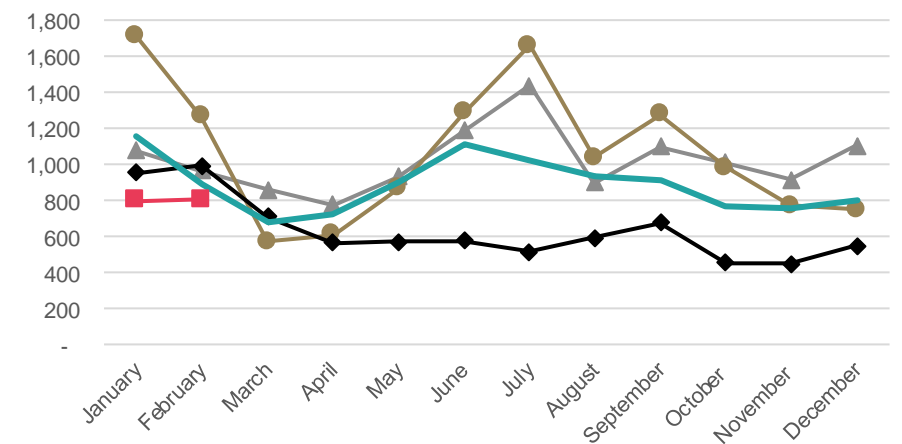
Region	2014 YTD	2015 YTD	2016 YTD	2017 YTD	Change Number	Change Percentage
Auckland	3,122	3,396	3,589	4,214	625	17%
Canterbury	563	713	707	904	197	28%
Wellington	316	365	402	410	8	2%
Waikato	267	237	297	330	33	11%
Otago	160	167	170	194	24	14%
Other	275	298	282	410	128	45%
Total	4,703	5,176	5,447	6,462	1,015	19%

- TSV in India were stable (-2%, -61) for the YTD 2017 compared to the YTD 2016, after decreasing since hitting a high in 2015 after dramatic growth.
- This decrease was as a result of a large decrease FSV for the PTE sector (-62%, +475). However, there has been a 53%(+ 131) increase in universities FSV for the YTD 2017 compared to the YTD 2016. For the YTD 2017, FSV for universities exceed FSV for PTE.
- RSV have increased for all sectors, especially ITP (+79%, +160) and PTE (+23%, +98).
- VSV were 16,265 for 1 March 2017, a 23%(-4,956) decrease since the same date in 2016 as a result of the decrease in Indian PTE students.

India: TSV approved in 2014-2017



India: FSV approved in 2014-2017



In brief

YTD	FSV	RSV	TSV
Visas	1,601	1,001	2,602
Change No.	- 345	284	- 61
Change Percent	-18%	40%	-2%

Changes are from the YTD 2016 to the YTD 2017

India: TSV by sector (\*)

	2014 YTD	2015 YTD	2016 YTD	2017 YTD	Change Number	Change Percentage
Schools	6	22	19	16	- 3	-16%
ITP	619	1,257	1,123	1,289	166	15%
PTE	1,712	2,101	1,198	821	- 377	-31%
Universities	299	276	322	476	154	48%
Total	2,636	3,656	2,662	2,602	- 60	-2%

India: Cumulative FSV and RSV



India: FSV by sector (\*)

	2014 YTD	2015 YTD	2016 YTD	2017 YTD	Change Number	Change Percentage
Schools	5	16	15	8	- 7	-47%
ITP	508	1,102	921	927	6	1%
PTE	1,309	1,652	765	290	- 475	-62%
Universities	219	203	245	376	131	53%
Total	2,041	2,973	1,946	1,601	- 345	-18%

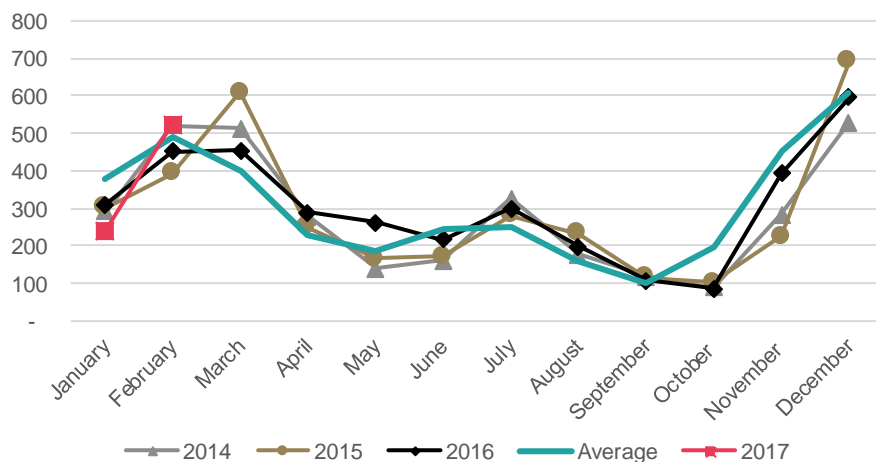
(\*) Please note that numbers by sector may not always add up to the same as the total because sector is not always stated.

India: TSV by region

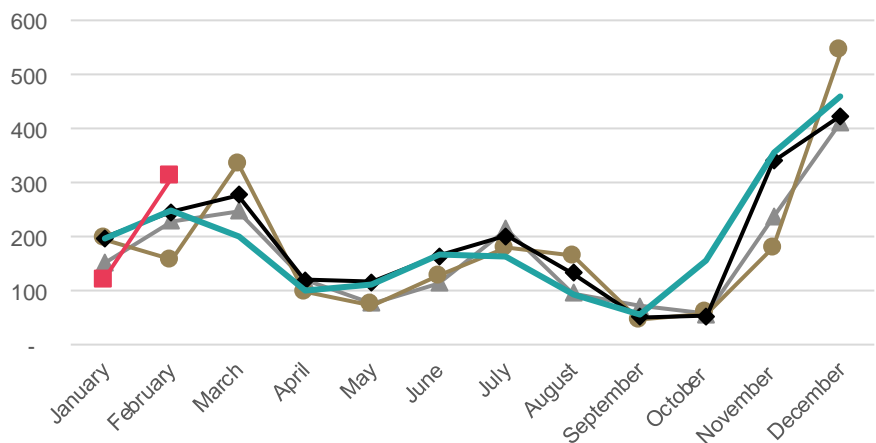
Region	2014 YTD	2015 YTD	2016 YTD	2017 YTD	Change Number	Change Percentage
Auckland	1,808	2,474	1,579	1,538	- 41	-3%
Canterbury	252	289	311	281	- 30	-10%
Bay of Plenty	203	293	233	165	- 68	-29%
Wellington	96	149	116	143	27	23%
Waikato	84	124	129	184	55	43%
Other	193	327	295	291	- 4	-1%
Total	2,636	3,656	2,663	2,602	- 61	-2%

- TSV for the YTD 2017 are stable compared to the YTD 2016. The ITP and PTE sectors have declined in the YTD 2017 compared to the YTD 2016, while the schools and universities sectors have increased.
- VSV were 3,658 on 1 March 2017, an increase of 3% (+118) over the same date last year.

Japan: TSV approved in 2014-2017



Japan: FSV approved in 2014-2017

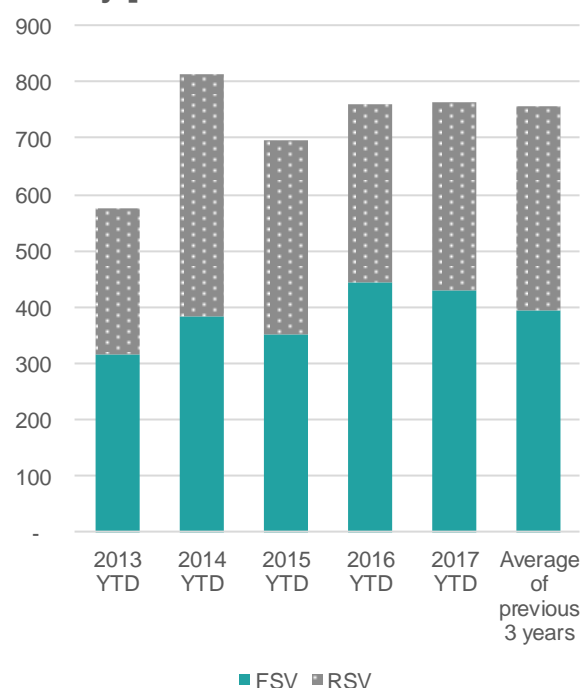


In brief

YTD	FSV	RSV	TSV
Visas	429	334	763
Change No.	- 13	15	2
Change Percent	-3%	5%	0%

Changes are from the YTD 2016 to the YTD 2017

Japan: Cumulative FSV and RSV



Japan: TSV by sector (\*)

	2014 YTD	2015 YTD	2016 YTD	2017 YTD	Change Number	Change Percentage
Schools	365	283	277	319	42	15%
ITP	53	52	62	41	- 21	-34%
PTE	209	157	229	181	- 48	-21%
Universities	184	199	184	222	38	21%
Total	811	691	752	763	11	1%

Japan: FSV by sector (\*)

	2014 YTD	2015 YTD	2016 YTD	2017 YTD	Change Number	Change Percentage
Schools	103	83	100	123	23	23%
ITP	31	28	50	21	- 29	-58%
PTE	164	120	190	145	- 45	-24%
Universities	82	115	93	140	47	51%
Total	380	346	433	429	- 4	-1%

(\*) Please note that numbers by sector may not always add up to the same as the total because sector is not always stated.

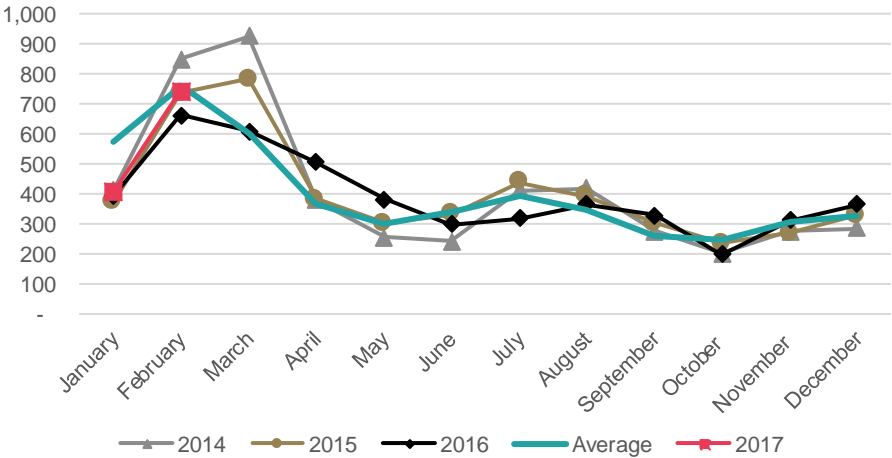
Japan: TSV by region

Region	2014 YTD	2015 YTD	2016 YTD	2017 YTD	Change Number	Change Percentage
Auckland	352	332	324	319	- 5	-2%
Canterbury	164	102	133	158	25	19%
Wellington	70	75	74	76	2	3%
Manawatu	49	32	55	53	- 2	-4%
Otago	48	39	35	37	2	6%
Other	130	117	140	120	- 20	-14%
Total	813	697	761	763	2	0%

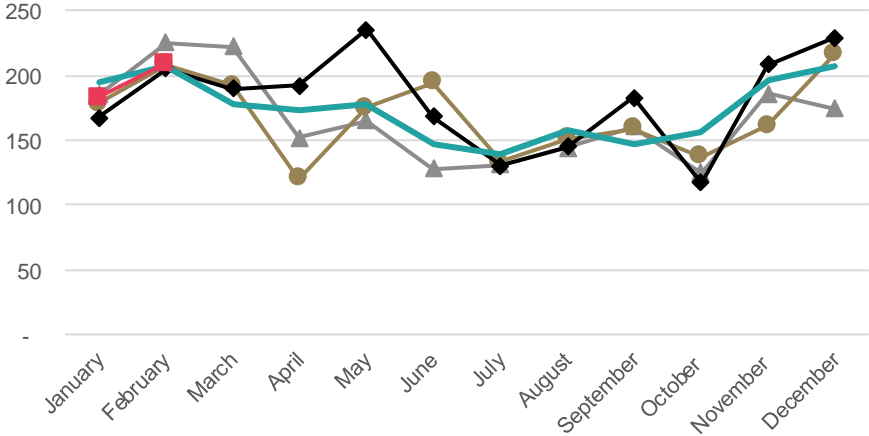


- TSV for 2017 are up 9%(+ 91) compared to the YTD 2016. This is in contrast to the general trend for the Korea market, which has been declining for a number of years due to less than favourable economic conditions, coupled with an increase in the quality of Korean education.
- TSV from Korea have decreased for the PTE sector and increased for the schools sector.
- There were 4,086 VSV on March 1 2017, which was an increase compared to the same date last year(+6%, +230).

Korea: TSV approved in 2014-2017



Korea: FSV approved in 2014-2017



In brief

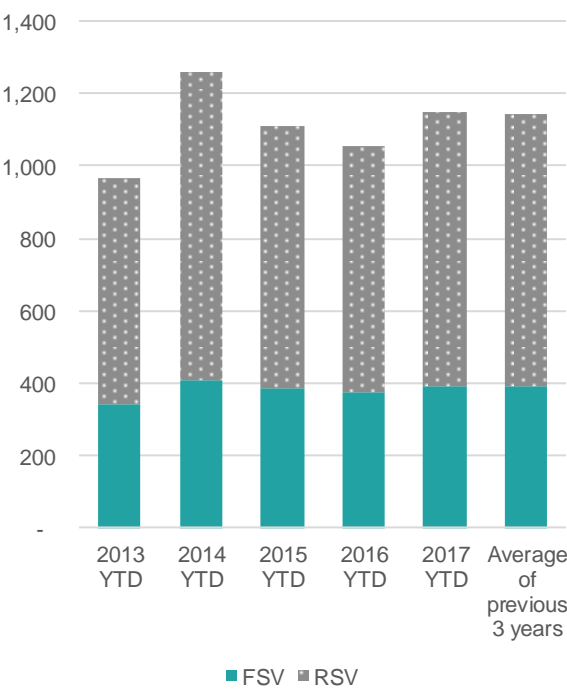
YTD	FSV	RSV	TSV
Visas	392	755	1,147
Change No.	20	71	91
Change Percent	5%	10%	9%

Changes are from the YTD 2016 to the YTD 2017

Korea: TSV by sector (\*)

	2014 YTD	2015 YTD	2016 YTD	2017 YTD	Change Number	Change Percentage
Schools	642	538	458	544	86	19%
ITP	64	64	66	90	24	36%
PTE	336	320	348	314	- 34	-10%
Universities	220	187	184	199	15	8%
Total	1,262	1,109	1,056	1,147	91	9%

Korea: Cumulative FSV and RSV



Korea: FSV by sector (\*)

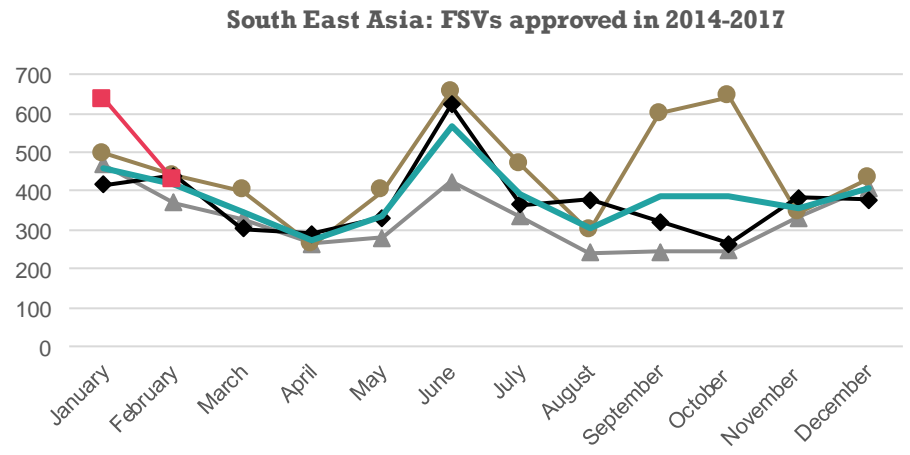
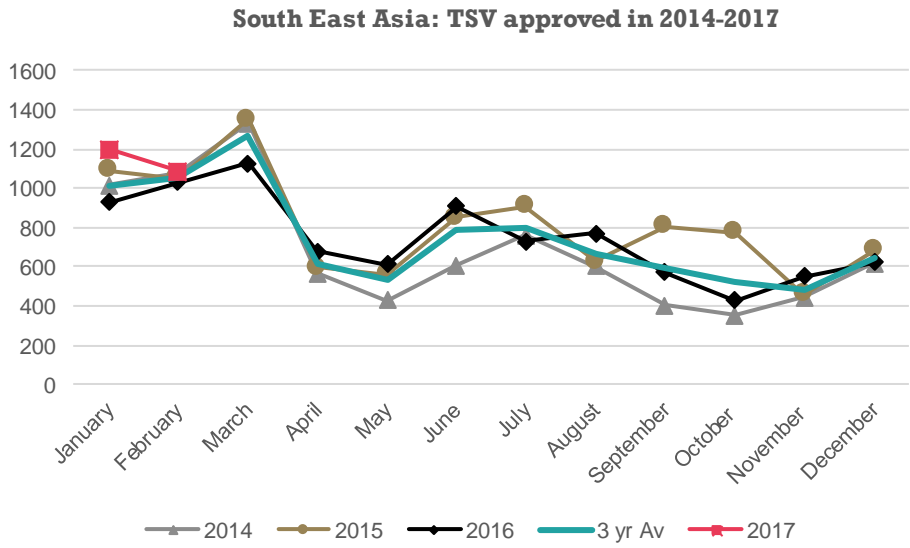
	2014 YTD	2015 YTD	2016 YTD	2017 YTD	Change Number	Change Percentage
Schools	176	153	125	137	12	10%
ITP	23	33	29	31	2	7%
PTE	178	177	198	196	- 2	-1%
Universities	33	23	20	28	8	40%
Total	410	386	372	392	20	5%

(\*) Please note that numbers by sector may not always add up to the same as the total because sector is not always stated.

Korea: TSV by region

Region	2014 YTD	2015 YTD	2016 YTD	2017 YTD	Change Number	Change Percentage
Auckland	843	760	727	730	3	0%
Bay of Plenty	118	108	115	151	36	31%
Canterbury	106	89	62	81	19	31%
Waikato	51	33	29	33	4	14%
Wellington	40	32	31	42	11	35%
Other	104	87	92	110	18	20%
Total	1,262	1,109	1,056	1,147	91	9%

- TSV for the YTD 2017 are up 17%(+326) compared to the YTD 2016. The main contributors to this increase were Viet Nam (+47%, +131) and Thailand (+13%, +81). The increase was across all sectors, but the universities and PTE sectors dominated .



In brief

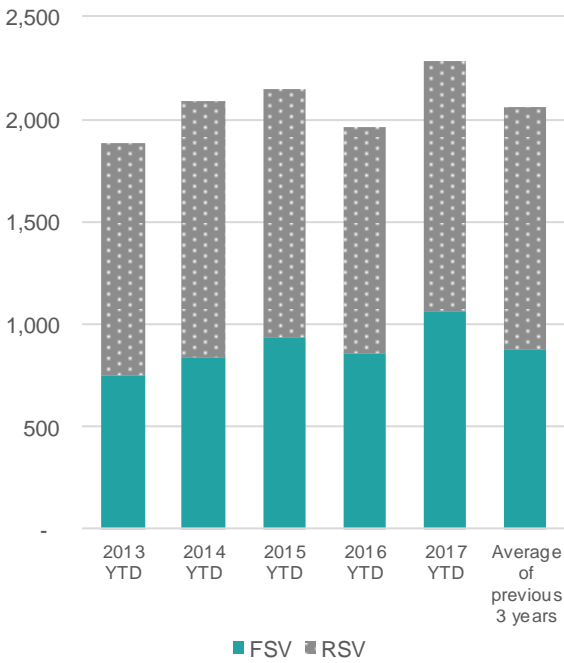
YTD	FSV	RSV	TSV
Visas	1,060	1,224	2,284
Change No.	206	120	326
Change Percent	24%	11%	17%

Changes are from the YTD 2016 to the YTD 2017

South East Asia: TSV by sector (\*)

	2014 YTD	2015 YTD	2016 YTD	2017 YTD	Change Number	Change Percentage
Schools	507	614	487	544	57	12%
ITP	174	170	198	215	17	9%
PTE	443	518	449	569	120	27%
Universities	965	839	822	953	131	16%
Total	2,089	2,141	1,956	2,281	325	17%

South East Asia: Cumulative FSV and RSV



South East Asia: FSV by sector (\*)

	2014 YTD	2015 YTD	2016 YTD	2017 YTD	Change Number	Change Percentage
Schools	137	189	127	143	16	13%
ITP	80	83	100	115	15	15%
PTE	292	352	299	360	61	20%
Universities	331	308	326	442	116	36%
Total	840	932	852	1,060	208	24%

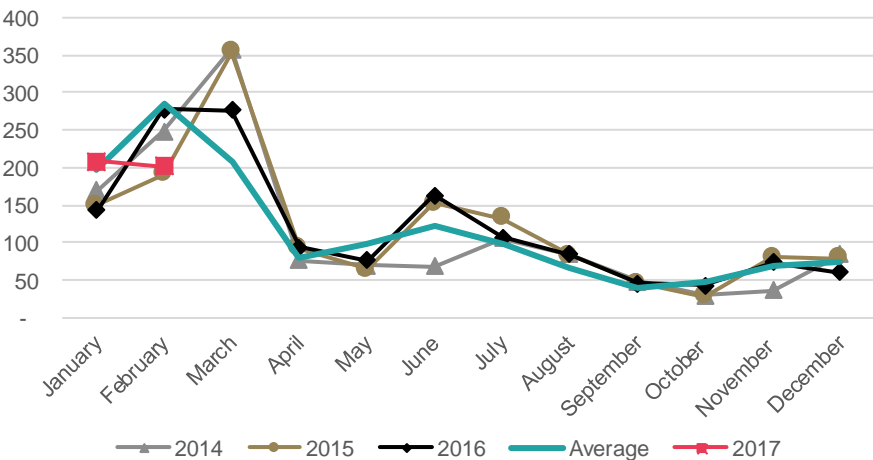
(\*) Please note that numbers by sector may not always add up to the same as the total because sector is not always stated.

South East Asia: TSV by region

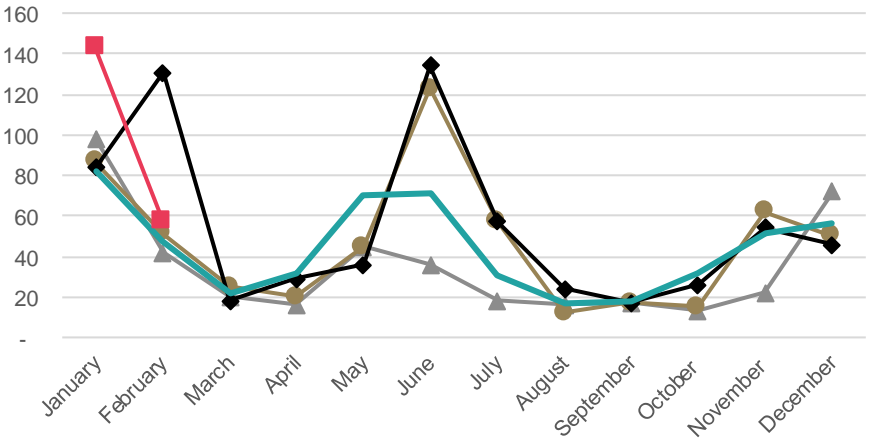
Region	2014 YTD	2015 YTD	2016 YTD	2017 YTD	Change Number	Change Percentage
Auckland	979	1,034	929	1,176	247	27%
Canterbury	266	278	279	289	10	4%
Wellington	247	211	223	265	42	19%
Otago	210	219	155	173	18	12%
Manawatu	123	154	99	95	- 4	-4%
Other	264	249	273	286	13	5%
Total	2,089	2,145	1,958	2,284	326	17%

- TSV for the YTD 2017 were on par with (-2%, -10) compared to the YTD 2016. There was a drop in FSV for the universities sector (-14%, -24).
- There were 1,902 VSV on 1 March 2017, which is 11% (+181) more than the same date in 2016.

Malaysia: TSV approved in 2014-2017



Malaysia: FSV approved in 2014-2017

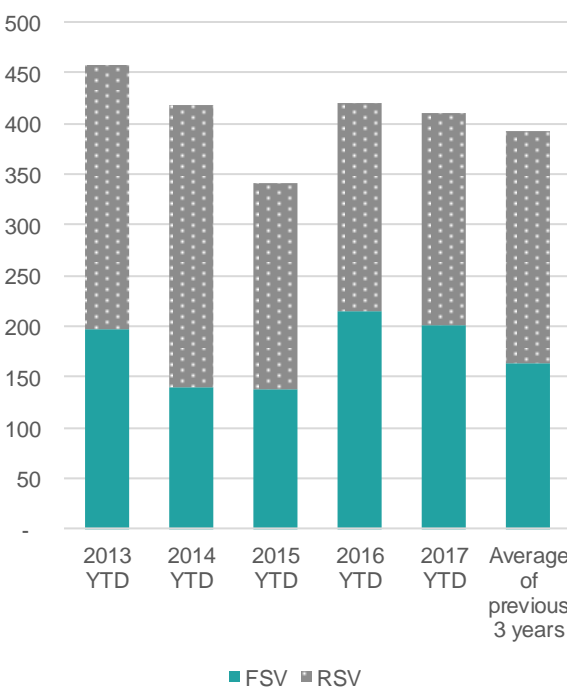


In brief

YTD	FSV	RSV	TSV
Visas	200	211	411
Change No.	- 15	5	- 10
Change Percent	-7%	2%	-2%

Changes are from the YTD 2016 to the YTD 2017

Malaysia: Cumulative FSV and RSV



Malaysia: TSV by sector (\*)

	2014 YTD	2015 YTD	2016 YTD	2017 YTD	Change Number	Change Percentage
Schools	27	26	30	33	3	10%
ITP	22	23	19	33	14	74%
PTE	18	23	33	30	- 3	-9%
Universities	351	268	337	315	- 22	-7%
Total	418	340	419	411	- 8	-2%

Malaysia: FSV by sector (\*)

	2014 YTD	2015 YTD	2016 YTD	2017 YTD	Change Number	Change Percentage
Schools	13	11	11	9	- 2	-18%
ITP	8	8	8	21	13	163%
PTE	11	14	20	20	-	0%
Universities	108	104	174	150	- 24	-14%
Total	140	137	213	200	- 13	-6%

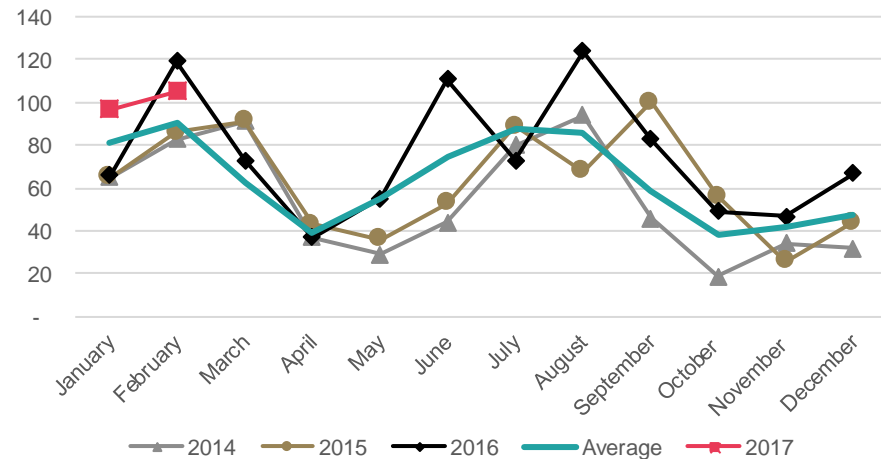
(\*) Please note that numbers by sector may not always add up to the same as the total because sector is not always stated.

Malaysia: TSV by region

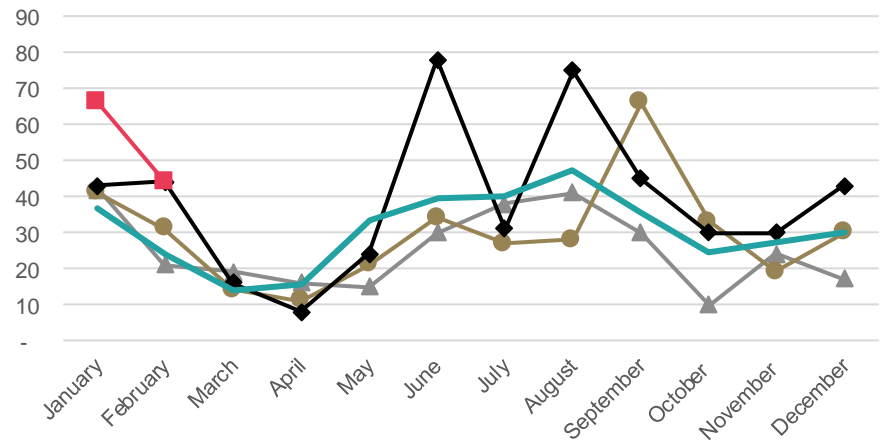
Region	2014 YTD	2015 YTD	2016 YTD	2017 YTD	Change Number	Change Percentage
Auckland	160	133	176	179	3	2%
Canterbury	75	68	99	85	- 14	-14%
Otago	85	83	53	67	14	26%
Wellington	38	18	45	24	- 21	-47%
Waikato	27	15	29	23	- 6	-21%
Other	33	24	19	33	14	74%
Total	418	341	421	411	- 10	-2%

- TSV increased by 9%(+17) in the YTD 2017 compared to the YTD 2016. This increase has been focused on the universities sector.
- There were 1,042 VSV on March 1 2017, an increase of 37%(+ 279) on the same date last year.

Indonesia: TSV approved in 2014-2017



Indonesia: FSV approved in 2014-2017

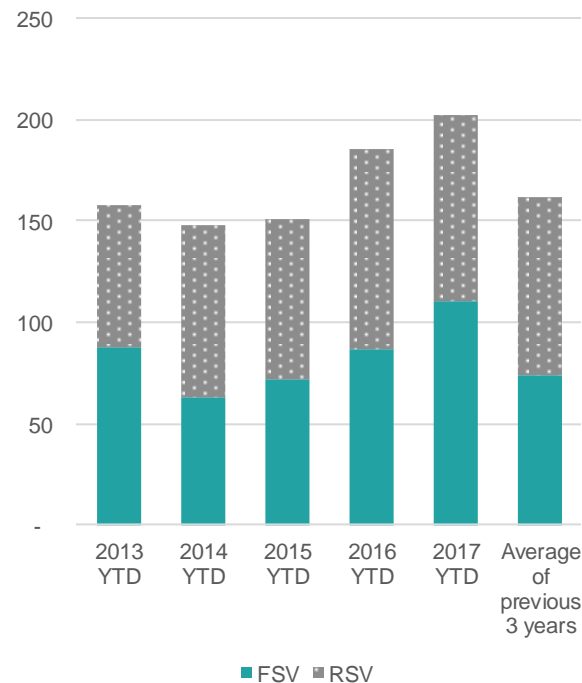


In brief

YTD	FSV	RSV	TSV
Visas	110	92	202
Change No.	23	- 6	17
Change Percent	26%	-6%	9%

Changes are from the YTD 2016 to the YTD 2017

Indonesia: Cumulative FSV and RSV



Indonesia: TSV by sector (\*)

	2014 YTD	2015 YTD	2016 YTD	2017 YTD	Change Number	Change Percentage
Schools	7	9	19	16	- 3	-16%
ITP	14	13	28	34	6	21%
PTE	30	30	46	42	- 4	-9%
Universities	97	99	92	110	18	20%
Total	148	151	185	202	17	9%

Indonesia: FSV by sector (\*)

	2014 YTD	2015 YTD	2016 YTD	2017 YTD	Change Number	Change Percentage
Schools	3	4	5	8	3	60%
ITP	6	9	13	16	3	23%
PTE	16	14	32	24	- 8	-25%
Universities	38	45	37	62	25	68%
Total	63	72	87	110	23	26%

(\*) Please note that numbers by sector may not always add up to the same as the total because sector is not always stated.

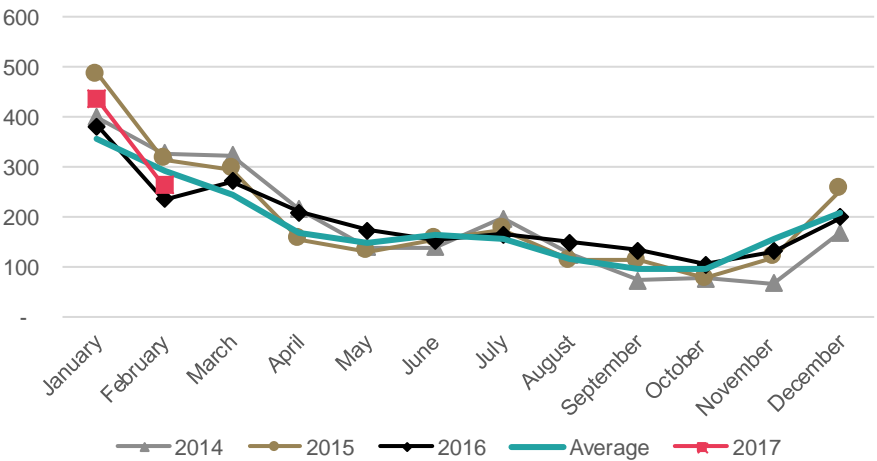
Indonesia: TSV by region

Region	2014 YTD	2015 YTD	2016 YTD	2017 YTD	Change Number	Change Percentage
Auckland	84	86	92	102	10	11%
Canterbury	17	18	14	27	13	93%
Wellington	17	17	21	24	3	14%
Manawatu	11	12	27	19	- 8	-30%
Otago	12	8	6	10	4	67%
Other	7	10	25	20	- 5	-20%
Total	148	151	185	202	17	9%

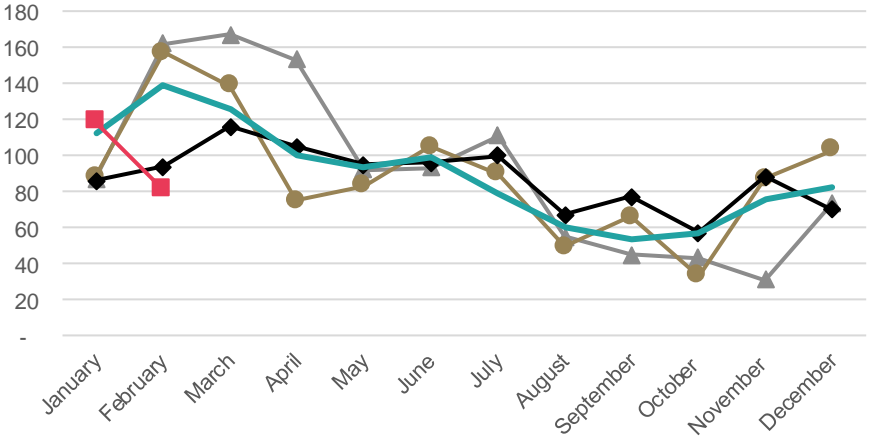


- TSV for Thailand for the YTD 2017 have increased by 13%(+ 81) compared to the YTD 2016. The schools and universities sectors have both had increases in TSV for the YTD 2017. Most of this increase has been in the Auckland region.
- VSV for 1 March 2017 were 2,271, a 7%(+ 157) increase from the same day in 2016.

Thailand: TSV approved in 2014-2017



Thailand: FSV approved in 2014-2017

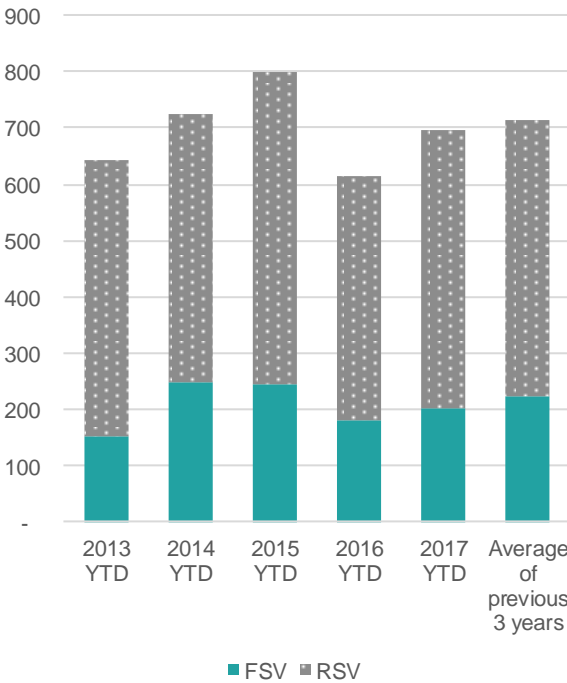


In brief

YTD	FSV	RSV	TSV
Visas	200	497	697
Change No.	20	61	81
Change Percent	11%	14%	13%

Changes are from the YTD 2016 to the YTD 2017

Thailand: Cumulative FSV and RSV



Thailand: TSV by sector (\*)

	2014 YTD	2015 YTD	2016 YTD	2017 YTD	Change Number	Change Percentage
Schools	400	504	370	379	9	2%
ITP	35	28	26	16	- 10	-38%
PTE	161	141	121	174	53	44%
Universities	129	125	99	128	29	29%
Total	725	798	616	697	81	13%

Thailand: FSV by sector (\*)

	2014 YTD	2015 YTD	2016 YTD	2017 YTD	Change Number	Change Percentage
Schools	96	145	86	79	- 7	-8%
ITP	12	2	8	1	- 7	-88%
PTE	109	86	77	104	27	35%
Universities	32	12	9	16	7	78%
Total	249	245	180	200	20	11%

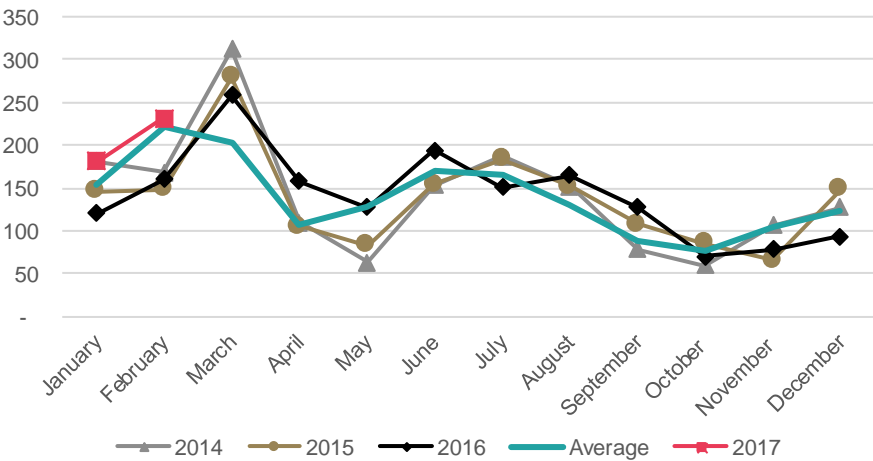
(\*) Please note that numbers by sector may not always add up to the same as the total because sector is not always stated.

Thailand: TSV by region

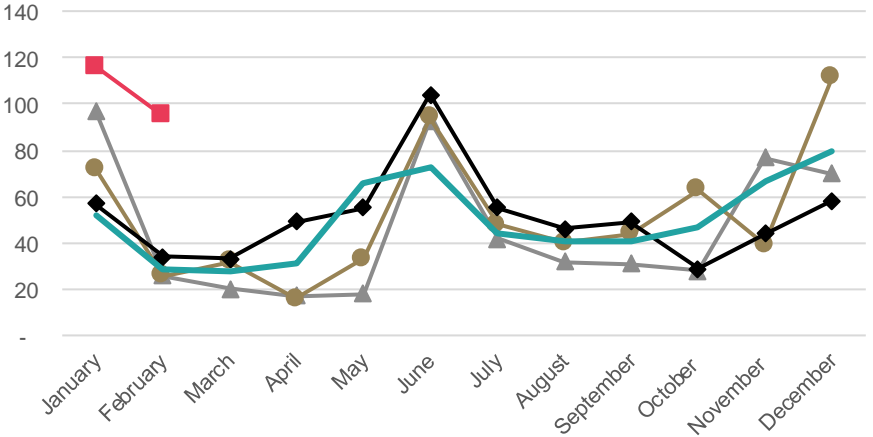
Region	2014 YTD	2015 YTD	2016 YTD	2017 YTD	Change Number	Change Percentage
Auckland	331	353	276	368	92	33%
Canterbury	97	111	99	96	- 3	-3%
Wellington	53	53	48	49	1	2%
Otago	44	58	50	45	- 5	-10%
Manawatu	54	93	20	19	- 1	-5%
Other	146	130	123	120	- 3	-2%
Total	725	798	616	697	81	13%

- TSV for Viet Nam have increased by 47%(+131) for the YTD 2017 when compared to the YTD 2016. FSV for the universities, PTE and school sectors have increased. It is possible that this increase was caused by visas being processed later than normal for this market.
- VSV for 1 March 2017 were 1,751, an increase for 17% (+254) since the same day in 2016.

Viet Nam: TSV approved in 2014-2017



Viet Nam: FSV approved in 2014-2017

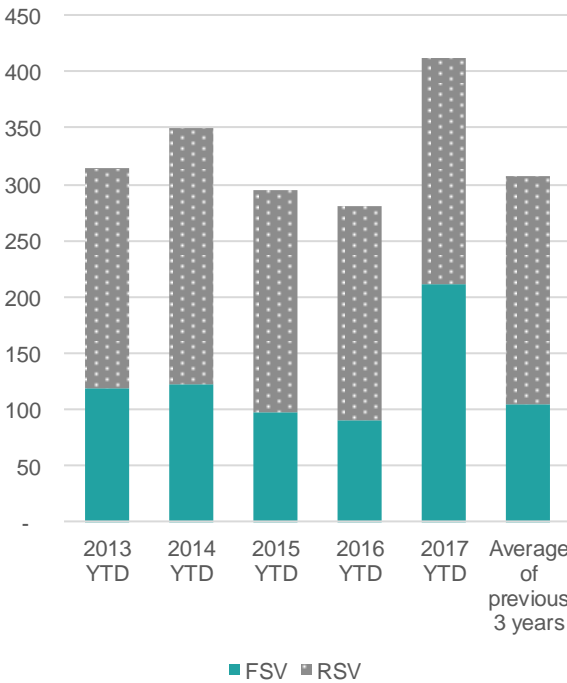


In brief

YTD	FSV	RSV	TSV
Visas	211	201	412
Change No.	120	11	131
Change Percent	132%	6%	47%

Changes are from the YTD 2016 to the YTD 2017

Viet Nam: Cumulative FSV and RSV



Viet Nam: TSV by sector (\*)

	2014 YTD	2015 YTD	2016 YTD	2017 YTD	Change Number	Change Percentage
Schools	47	32	28	63	35	125%
ITP	41	34	53	47	- 6	-11%
PTE	72	72	71	113	42	59%
Universities	189	156	129	186	57	44%
Total	349	294	281	409	128	46%

Viet Nam: FSV by sector (\*)

	2014 YTD	2015 YTD	2016 YTD	2017 YTD	Change Number	Change Percentage
Schools	12	9	9	26	17	189%
ITP	15	10	17	20	3	18%
PTE	20	18	26	57	31	119%
Universities	76	61	39	108	69	177%
Total	123	98	91	211	120	132%

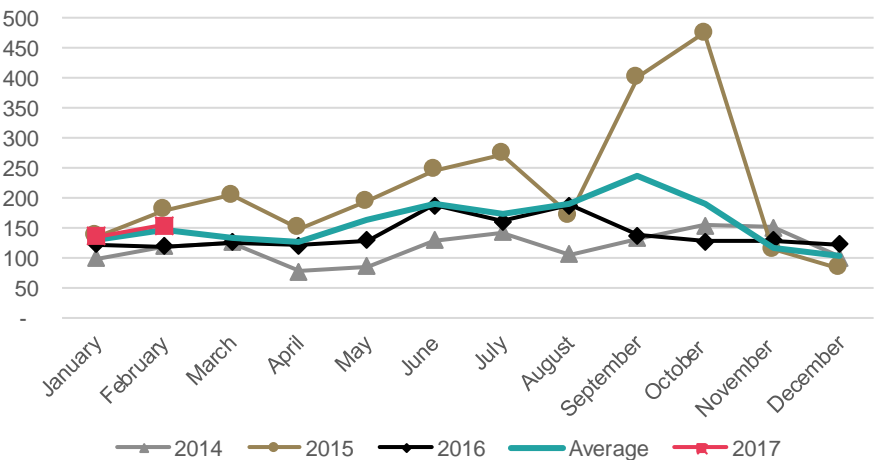
(\*) Please note that numbers by sector may not always add up to the same as the total because sector is not always stated.

Viet Nam: TSV by region

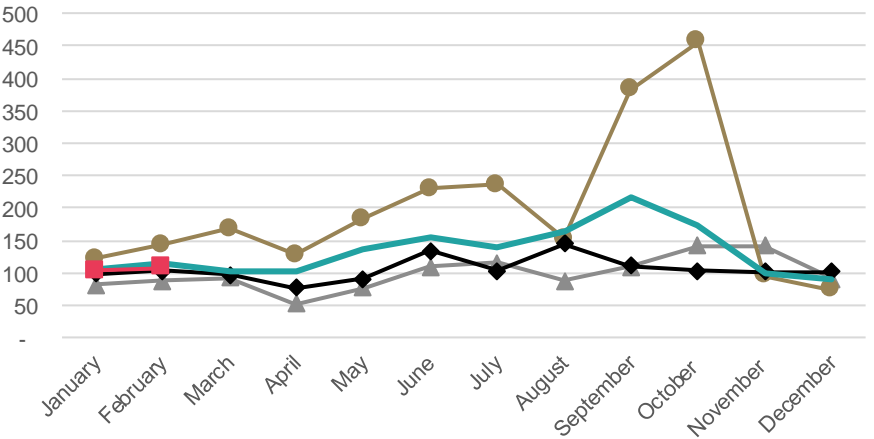
Region	2014 YTD	2015 YTD	2016 YTD	2017 YTD	Change Number	Change Percentage
Auckland	168	138	139	219	80	58%
Wellington	83	75	65	109	44	68%
Canterbury	34	26	17	25	8	47%
Manawatu	21	19	25	22	- 3	-12%
Southland	16	13	14	13	- 1	-7%
Other	27	23	21	24	3	14%
Total	349	294	281	412	131	47%

- TSV for the Philippines have increased by 20%(+ 47) in the YTD 2017 compared to the YTD 2016. Most of this increase in RSV is in the PTE sector.
- VSV on March 1 2017 are 1,860, a decrease of 24% (-588) from the same date in 2016, due to a decline in VSV for PTE students. This decrease is likely related to the implementation of rule 18.

Philippines: TSV approved in 2014-2017



Philippines: FSV approved in 2014-2017



In brief

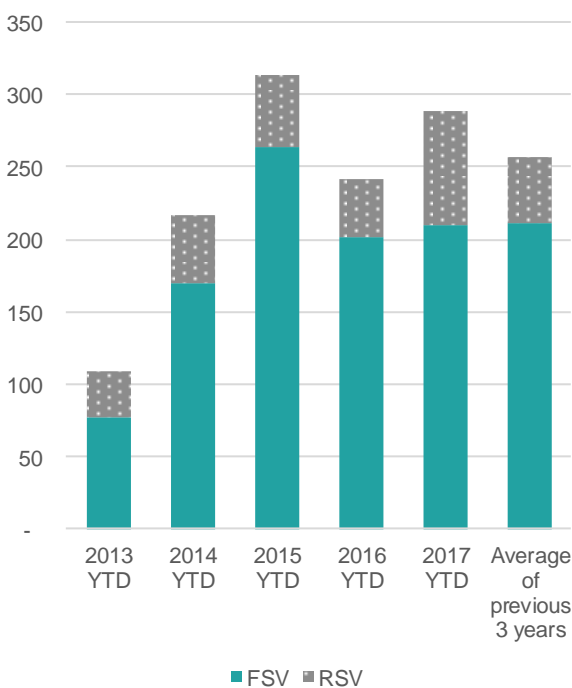
YTD	FSV	RSV	TSV
Visas	210	78	288
Change No.	9	38	47
Change Percent	4%	95%	20%

Changes are from the YTD 2016 to the YTD 2017

Philippines: TSV by sector (\*)

	2014 YTD	2015 YTD	2016 YTD	2017 YTD	Change Number	Change Percentage
Schools	8	11	10	9	- 1	-10%
ITP	42	61	57	68	11	19%
PTE	144	215	147	169	22	15%
Universities	23	24	27	42	15	56%
Total	217	311	241	288	47	20%

Philippines: Cumulative FSV and RSV



Philippines: FSV by sector (\*)

	2014 YTD	2015 YTD	2016 YTD	2017 YTD	Change Number	Change Percentage
Schools	5	4	5	1	- 4	-80%
ITP	27	48	49	48	- 1	-2%
PTE	129	194	128	135	7	5%
Universities	9	15	19	26	7	37%
Total	170	261	201	210	9	4%

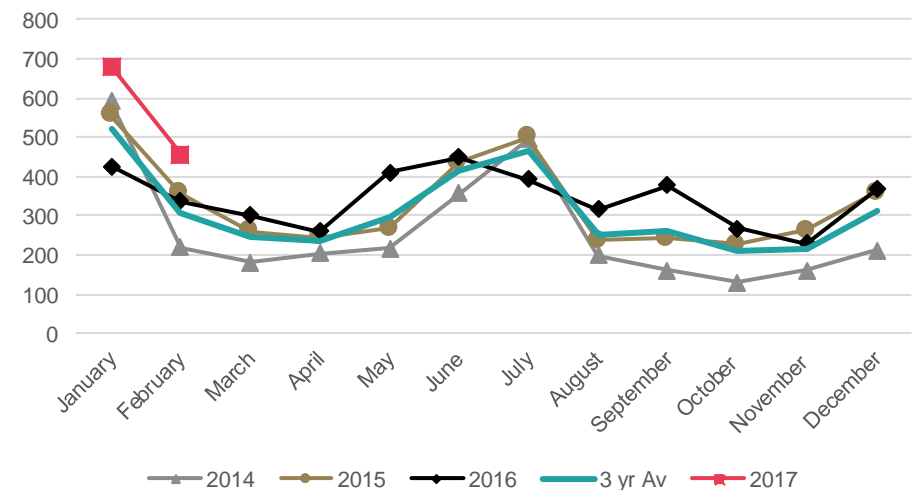
(\*) Please note that numbers by sector may not always add up to the same as the total because sector is not always stated.

Philippines: TSV by region

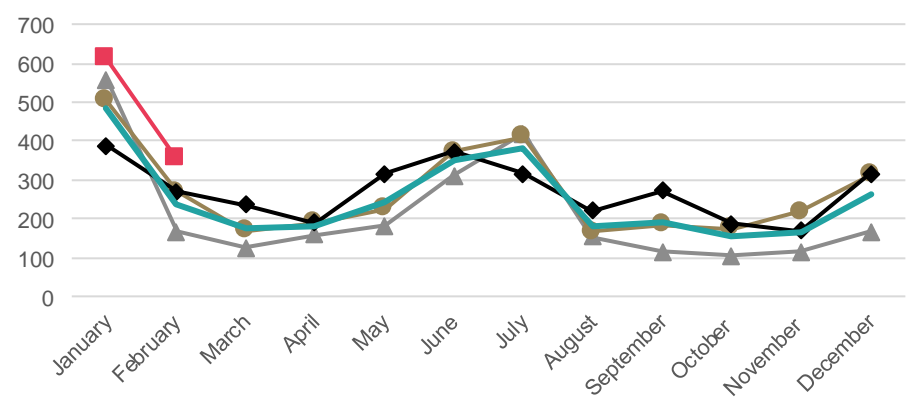
Region	2014 YTD	2015 YTD	2016 YTD	2017 YTD	Change Number	Change Percentage
Auckland	159	219	150	181	31	21%
Bay of Plenty	12	30	32	39	7	22%
Canterbury	14	26	23	22	- 1	-4%
Wellington	7	14	9	15	6	67%
Waikato	7	5	11	6	- 5	-45%
Other	18	20	16	25	9	56%
Total	217	314	241	288	47	20%

- TSV have increased by 49%(+ 374) in the YTD 2017 when compared to the YTD 2016. The top Latin American countries, Brazil, Colombia, Chile, Mexico and Argentina, all have increased TSV for the YTD 2017.

Latin America: TSV approved in 2014-2017



Latin America: FSVs approved in 2014-2017



In brief

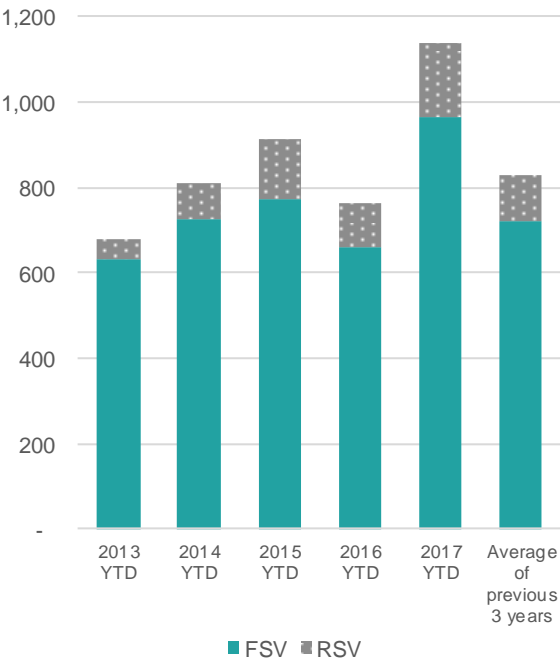
YTD	FSV	RSV	TSV
Visas	965	172	1,137
Change No.	307	67	374
Change Percent	47%	64%	49%

Changes are from the YTD 2016 to the YTD 2017

Latin America: TSV by sector (\*)

	2014 YTD	2015 YTD	2016 YTD	2017 YTD	Change Number	Change Percentage
Schools	413	230	144	298	154	107%
ITP	23	28	30	51	21	70%
PTE	251	442	494	675	181	37%
Universities	100	178	65	97	32	49%
Total	787	878	733	1,121	388	53%

Latin America: Cumulative FSV and RSV



Latin America: FSV by sector (\*)

	2014 YTD	2015 YTD	2016 YTD	2017 YTD	Change Number	Change Percentage
Schools	393	218	136	292	156	115%
ITP	15	15	19	28	9	47%
PTE	223	377	433	561	128	30%
Universities	71	130	40	68	28	70%
Total	702	740	628	949	321	51%

(\*) Please note that numbers by sector may not always add up to the same as the total because sector is not always stated.

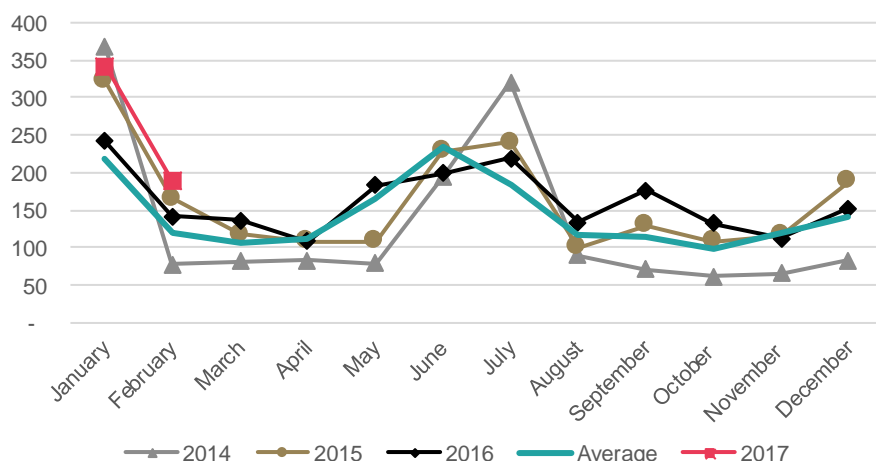
Latin America: TSV by region

Region	2014 YTD	2015 YTD	2016 YTD	2017 YTD	Change Number	Change Percentage
Auckland	412	564	498	704	206	41%
Canterbury	116	54	53	106	53	100%
Southland	16	52	38	87	49	129%
Wellington	89	86	30	69	39	130%
Bay of Plenty	22	47	16	43	27	169%
Other	156	110	128	128	-	0%
Total	811	913	763	1,137	374	49%

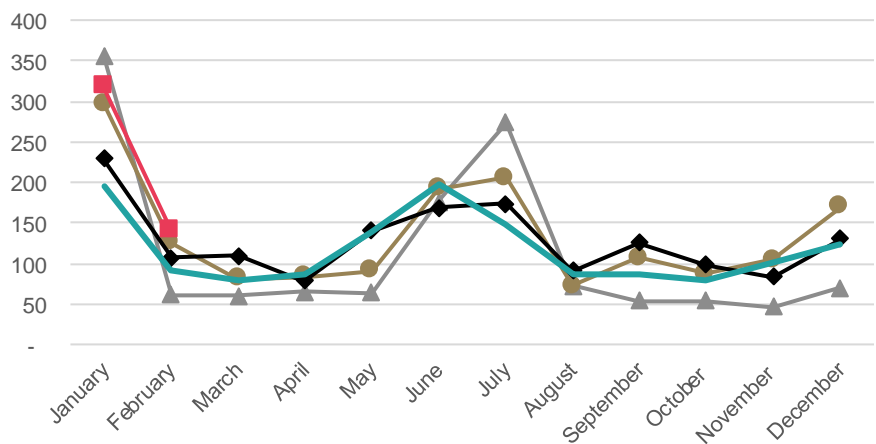


- TSV for the YTD 2017 are up 39%(+148) compared to the YTD 2016. This increase is led by the schools and PTE sectors.
- VSV for 1 March 2017 were 1,331, a 13%(+ 149) increase from the same date in 2016.

**Brazil: TSV approved in 2014-2017**



**Brazil: FSV approved in 2014-2017**



**In brief**

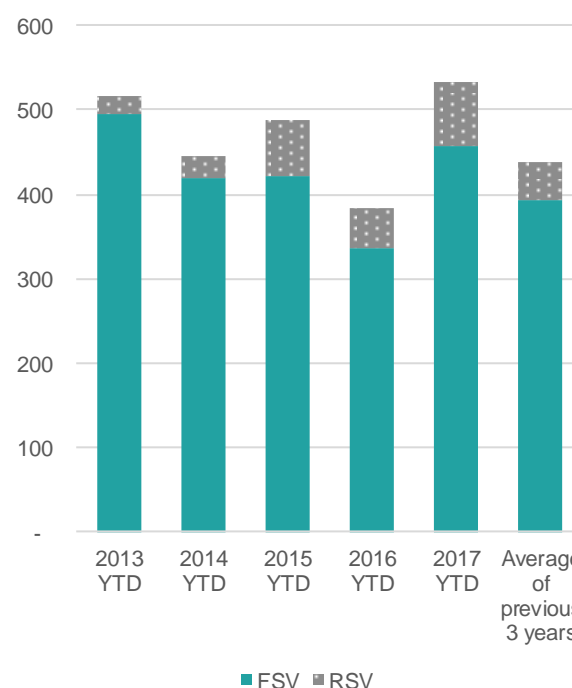
YTD	FSV	RSV	TSV
Visas	458	74	532
Change No.	122	26	148
Change Percent	36%	54%	39%

Changes are from the YTD 2016 to the YTD 2017

**Brazil: TSV by sector (\*)**

	2014 YTD	2015 YTD	2016 YTD	2017 YTD	Change Number	Change Percentage
Schools	279	155	118	197	79	67%
ITP	10	5	12	18	6	50%
PTE	100	213	227	294	67	30%
Universities	47	103	16	19	3	19%
Total	436	476	373	528	155	42%

**Brazil: Cumulative FSV and RSV**



**Brazil: FSV by sector (\*)**

	2014 YTD	2015 YTD	2016 YTD	2017 YTD	Change Number	Change Percentage
Schools	274	149	115	194	79	69%
ITP	5	2	7	11	4	57%
PTE	90	187	196	239	43	22%
Universities	40	72	7	10	3	43%
Total	409	410	325	454	129	40%

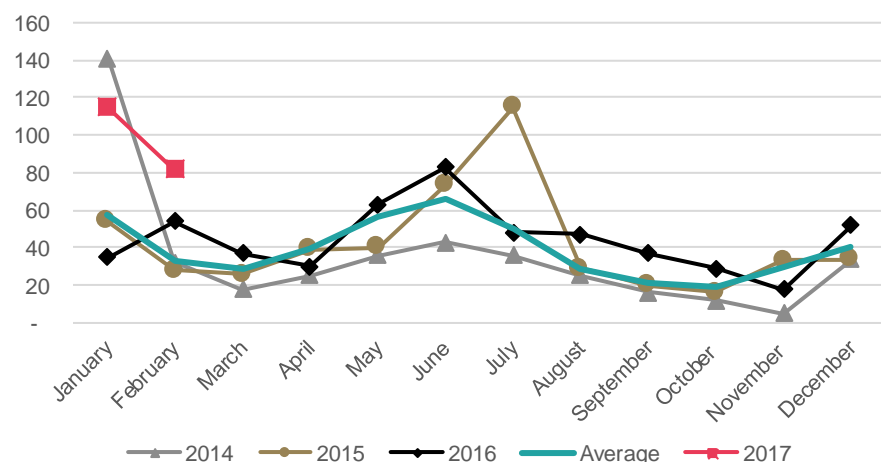
(\*) Please note that numbers by sector may not always add up to the same as the total because sector is not always stated.

**Brazil: TSV by region**

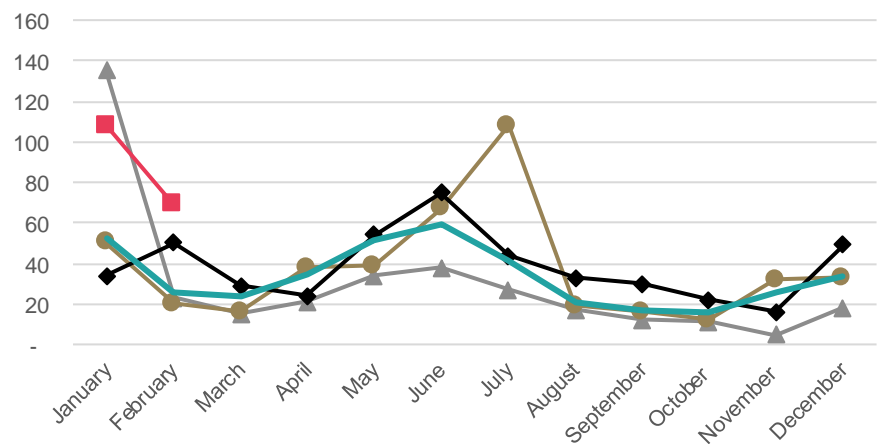
Region	2014 YTD	2015 YTD	2016 YTD	2017 YTD	Change Number	Change Percentage
Auckland	194	290	242	302	60	25%
Canterbury	52	31	30	62	32	107%
Wellington	52	38	15	25	10	67%
Bay of Plenty	14	31	10	30	20	200%
Otago	31	20	17	24	7	41%
Other	102	78	70	89	19	27%
Total	445	488	384	532	148	39%

- TSV were up 121%(+108) for the 2017 YTD compared to the YTD 2016. The schools sector had a 767% (+69) increase, which mainly received their visas in January. This stems from the Chilean government's "Penguins without Borders" programme, which sends high-achieving secondary school students to New Zealand for two terms.
- VSV were 420 on 1 March 2017, a 48% (+137) increase on the same day in 2016.

Chile: TSV approved in 2014-2017



Chile: FSV approved in 2014-2017

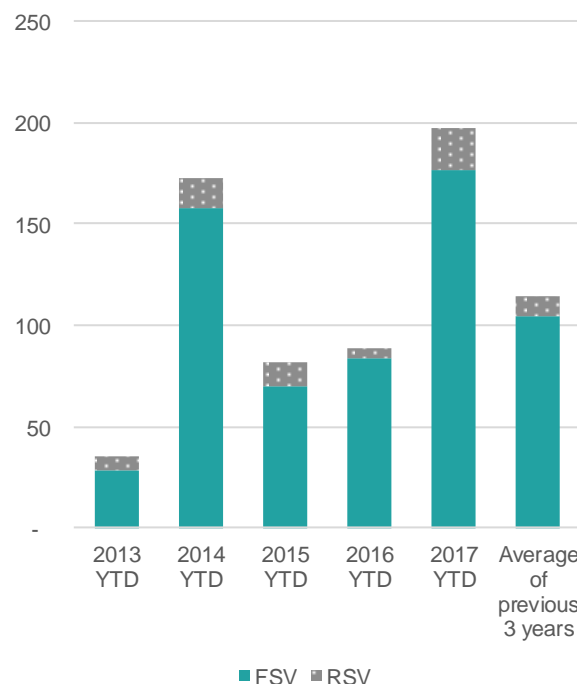


In brief

YTD	FSV	RSV	TSV
Visas	177	20	197
Change No.	93	15	108
Change Percent	111%	300%	121%

Changes are from the YTD 2016 to the YTD 2017

Chile: Cumulative FSV and RSV



Chile: TSV by sector (\*)

	2014 YTD	2015 YTD	2016 YTD	2017 YTD	Change Number	Change Percentage
Schools	111	31	9	78	69	767%
ITP	3	7	4	11	7	175%
PTE	45	27	63	93	30	48%
Universities	11	8	8	11	3	38%
Total	170	73	84	193	109	130%

Chile: FSV by sector (\*)

	2014 YTD	2015 YTD	2016 YTD	2017 YTD	Change Number	Change Percentage
Schools	105	29	9	77	68	756%
ITP	2	1	3	2	-1	-33%
PTE	41	26	61	86	25	41%
Universities	7	5	6	8	2	33%
Total	155	61	79	173	94	119%

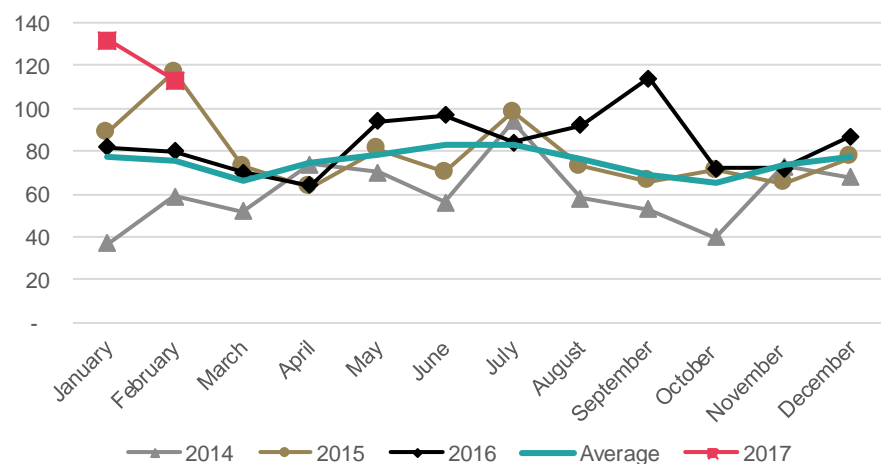
(\*) Please note that numbers by sector may not always add up to the same as the total because sector is not always stated.

Chile: TSV by region

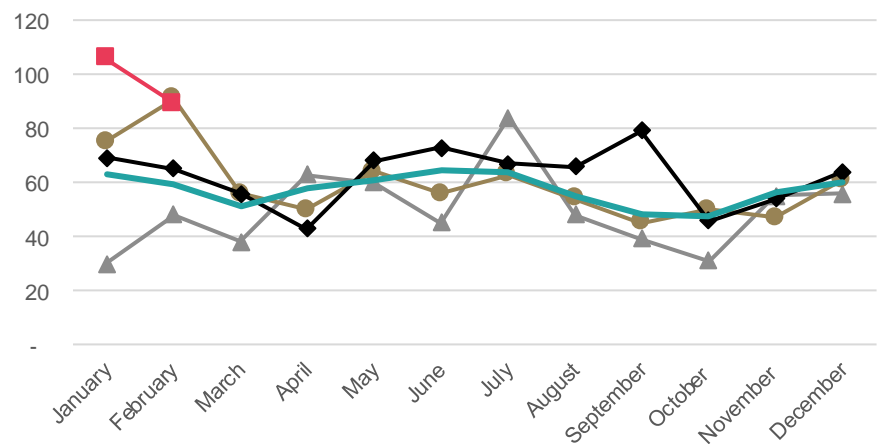
Region	2014 YTD	2015 YTD	2016 YTD	2017 YTD	Change Number	Change Percentage
Auckland	87	39	54	112	58	107%
Canterbury	40	2	2	25	23	1150%
Wellington	28	7	4	23	19	475%
Bay of Plenty	5	14	4	7	3	75%
Southland	4	3	3	12	9	300%
Other	9	17	22	18	-4	-18%
Total	173	82	89	197	108	121%

- TSV increased by 51% (+83) for the YTD 2017. The main contributor was PTE FSV.
- VSV were 750 on March 1 2017, an increase of 33% (+186) compared to the same day in 2016.

Colombia: TSV approved in 2014-2017



Colombia: FSV approved in 2014-2017

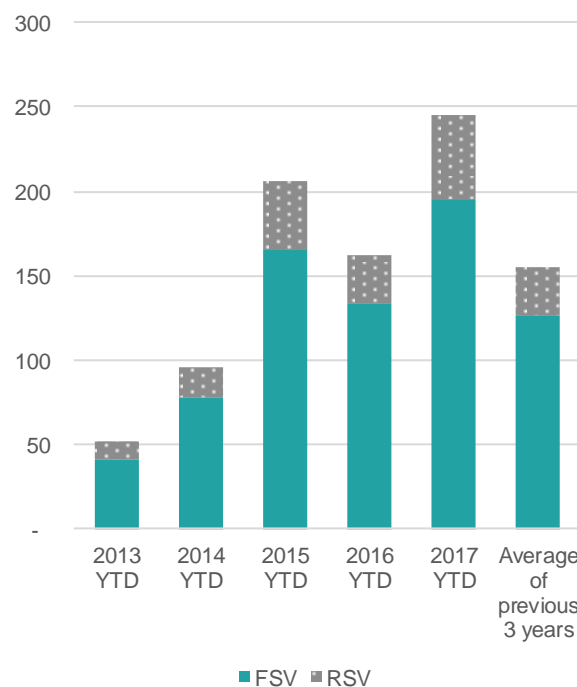


In brief

YTD	FSV	RSV	TSV
Visas	195	50	245
Change No.	61	22	83
Change Percent	46%	79%	51%

Changes are from the YTD 2016 to the YTD 2017

Colombia: Cumulative FSV and RSV



Colombia: TSV by sector (\*)

	2014 YTD	2015 YTD	2016 YTD	2017 YTD	Change Number	Change Percentage
Schools	3	11	3	1	- 2	-67%
ITP	3	7	6	10	4	67%
PTE	73	163	137	207	70	51%
Universities	17	25	16	27	11	69%
Total	96	206	162	245	83	51%

Colombia: FSV by sector (\*)

	2014 YTD	2015 YTD	2016 YTD	2017 YTD	Change Number	Change Percentage
Schools	3	11	3	1	- 2	-67%
ITP	2	3	3	6	3	100%
PTE	63	134	119	167	48	40%
Universities	10	18	9	21	12	133%
Total	78	166	134	195	61	46%

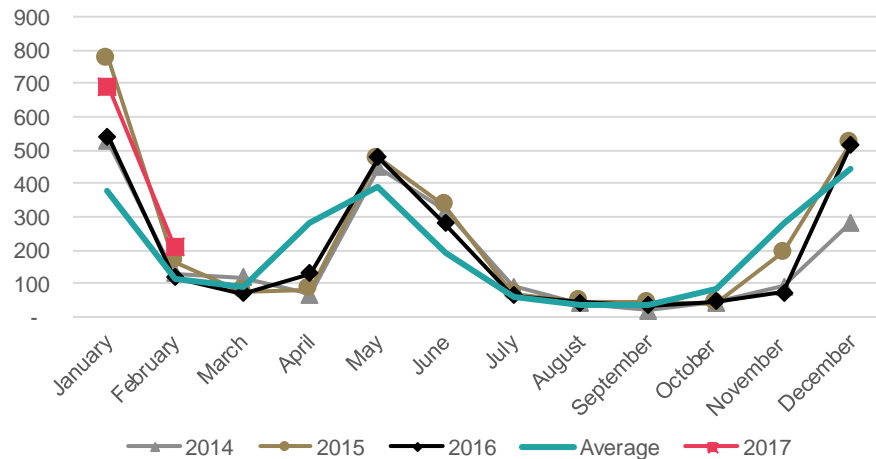
(\*) Please note that numbers by sector may not always add up to the same as the total because sector is not always stated.

Colombia: TSV by region

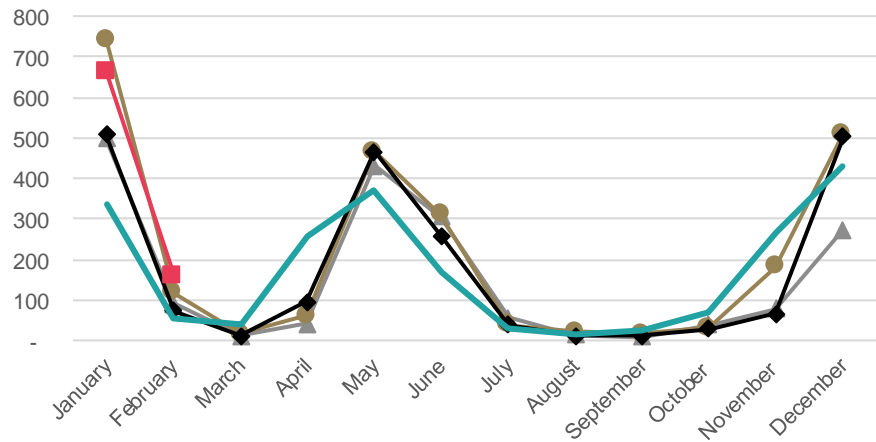
Region	2014 YTD	2015 YTD	2016 YTD	2017 YTD	Change Number	Change Percentage
Auckland	74	163	128	192	64	50%
Canterbury	12	14	12	10	- 2	-17%
Wellington	5	18	7	17	10	143%
Southland	1	10	8	19	11	138%
Waikato	2	-	3	2	- 1	-33%
Other	2	1	4	5	1	25%
Total	96	206	162	245	83	51%

- TSV increased by 37%(+ 244) for the YTD 2017 compared to YTD 2016. The main contributor was universities FSVs (+41%, +224). This appears to be a genuine increase in students rather than processing issues.
- VSV were 2,536 on March 1 2017, which was stable (+1%, +30) compared to the same day in 2016.

USA: TSV approved in 2014-2017



USA: FSV approved in 2014-2017

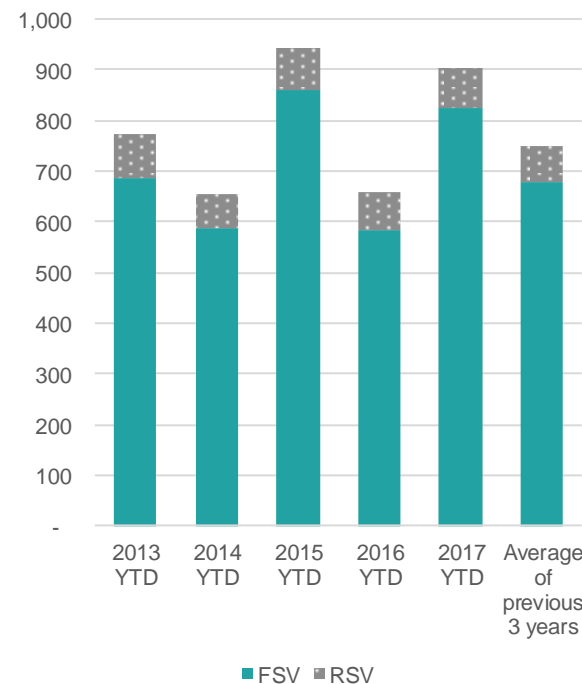


## In brief

YTD	FSV	RSV	TSV
Visas	824	79	903
Change No.	242	2	244
Change Percent	42%	3%	37%

Changes are from the YTD 2016 to the YTD 2017

USA: Cumulative FSV and RSV



USA: TSV by sector (\*)

	2014 YTD	2015 YTD	2016 YTD	2017 YTD	Change Number	Change Percentage
Schools	18	14	12	19	7	58%
ITP	18	19	13	13	-	0%
PTE	14	19	13	28	15	115%
Universities	603	883	614	836	222	36%
Total	653	935	652	896	244	37%

USA: FSV by sector (\*)

	2014 YTD	2015 YTD	2016 YTD	2017 YTD	Change Number	Change Percentage
Schools	8	9	7	10	3	43%
ITP	11	13	7	10	3	43%
PTE	12	15	12	24	12	100%
Universities	556	818	549	773	224	41%
Total	587	855	575	817	242	42%

(\*) Please note that numbers by sector may not always add up to the same as the total because sector is not always stated.

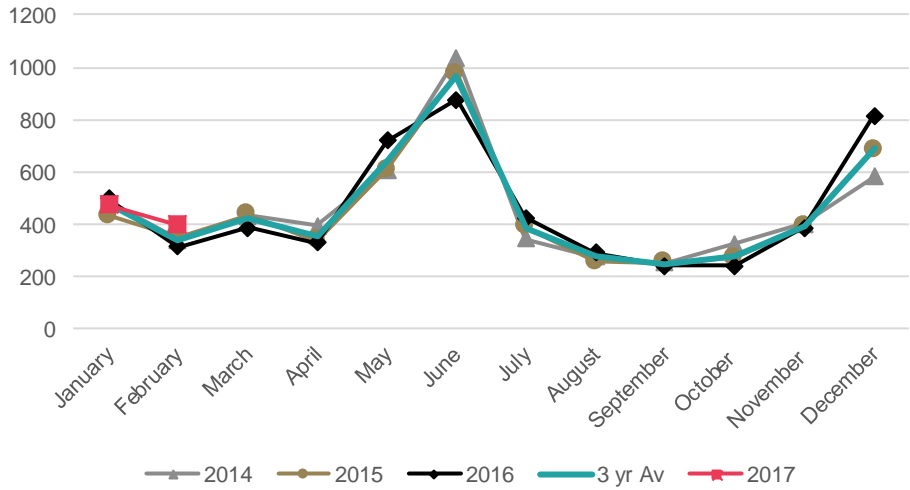
USA: TSV by region

Region	2014 YTD	2015 YTD	2016 YTD	2017 YTD	Change Number	Change Percentage
Auckland	173	289	209	323	114	55%
Otago	191	252	175	264	89	51%
Wellington	123	170	119	140	21	18%
Canterbury	100	135	88	106	18	20%
Manawatu	29	54	28	32	4	14%
Other	38	42	40	38	-	-5%
Total	654	942	659	903	244	37%

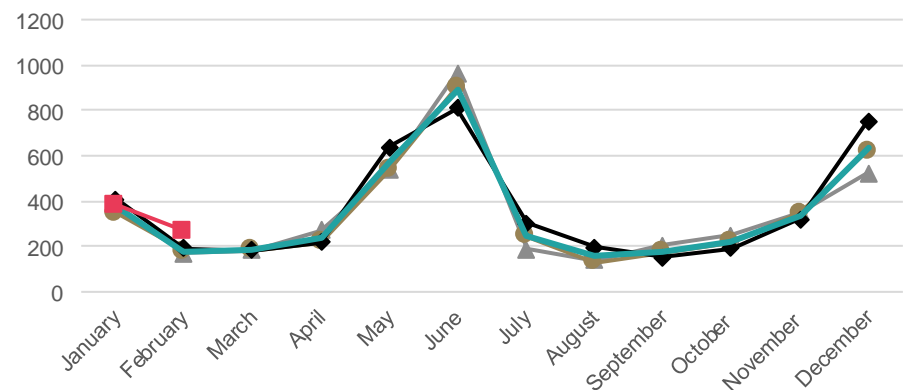


- TSV for the YTD 2017 increased by 8%(+61) compared to the YTD 2016. At this stage of the year, there is not enough data to highlight TSV trends for any countries. Germany and France, the main markets for Europe continue to be on par with the YTD 2016.

Europe: TSV approved in 2014-2017



Europe: FSVs approved in 2014-2017



In brief

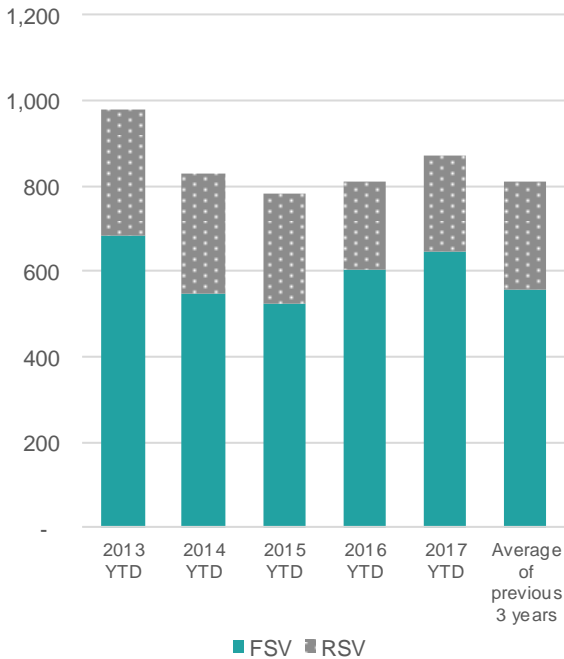
YTD	FSV	RSV	TSV
Visas	648	225	873
Change No.	45	16	61
Change Percent	7%	8%	8%

Changes are from the YTD 2016 to the YTD 2017

Europe: TSV by sector (\*)

	2014 YTD	2015 YTD	2016 YTD	2017 YTD	Change Number	Change Percentage
Schools	134	124	139	152	13	9%
ITP	107	105	87	93	6	7%
PTE	223	190	204	191	- 13	-6%
Universities	350	325	343	407	64	19%
Total	814	744	773	843	70	9%

Europe: Cumulative FSV and RSV



Europe: FSV by sector (\*)

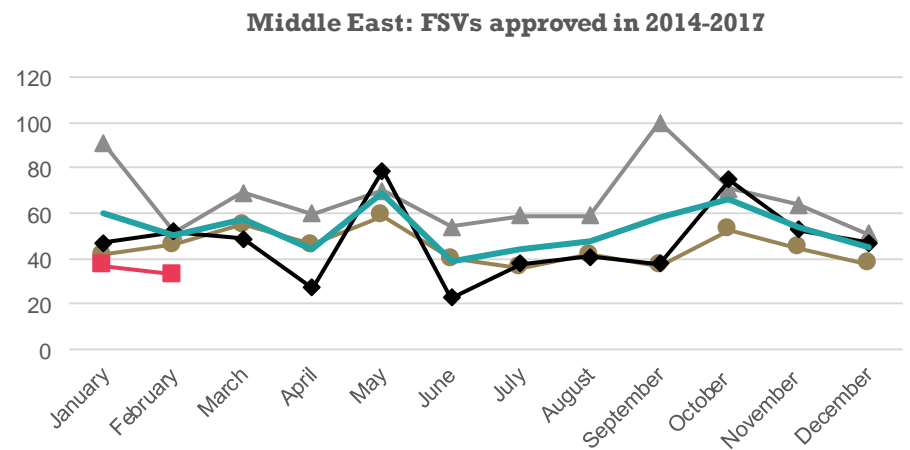
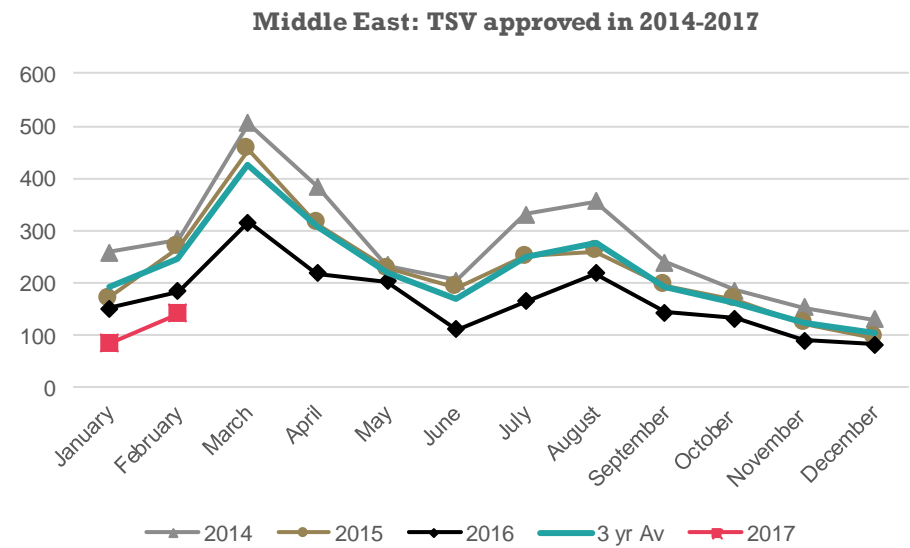
	2014 YTD	2015 YTD	2016 YTD	2017 YTD	Change Number	Change Percentage
Schools	89	82	114	118	4	4%
ITP	66	63	64	59	- 5	-8%
PTE	165	149	150	139	- 11	-7%
Universities	214	191	236	302	66	28%
Total	534	485	564	618	54	10%

(\*) Please note that numbers by sector may not always add up to the same as the total because sector is not always stated.

Europe: TSV by region

Region	2014 YTD	2015 YTD	2016 YTD	2017 YTD	Change Number	Change Percentage
Auckland	408	372	375	426	51	14%
Wellington	66	70	74	92	18	24%
Canterbury	80	73	87	88	1	1%
Otago	74	58	68	82	14	21%
Waikato	76	82	71	53	- 18	-25%
Other	125	129	137	132	- 5	-4%
Total	829	784	812	873	61	8%

- TSV for 2017 YTD decreased by 32%(-108) compared to the YTD 2016. This decrease is almost entirely the result of changes in the Saudi Arabian market detailed on the following page. This decrease can be seen in all sectors.

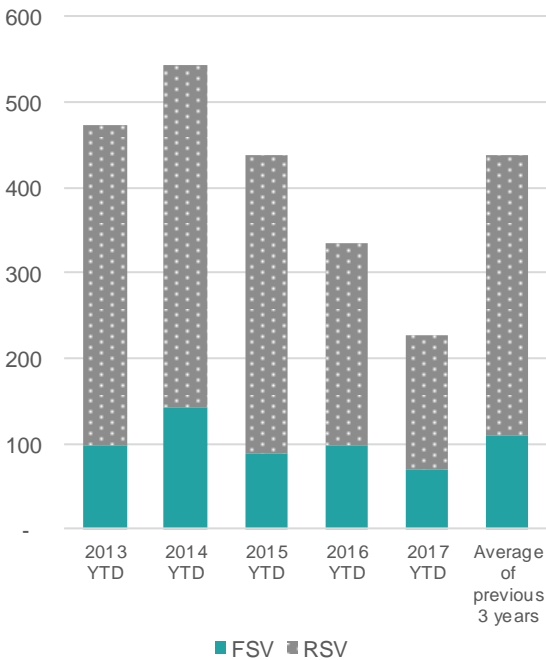


In brief

YTD	FSV	RSV	TSV
Visas	70	157	227
Change No.	- 29	- 79	- 108
Change Percent	-29%	-33%	-32%

Changes are from the YTD 2016 to the YTD 2017

Middle East: Cumulative FSV and RSV



Middle East: TSV by sector (\*)

	2014 YTD	2015 YTD	2016 YTD	2017 YTD	Change Number	Change Percentage
Schools	12	15	18	7	- 11	-61%
ITP	106	67	27	15	- 12	-44%
PTE	167	139	73	53	- 20	-27%
Universities	254	209	216	152	- 64	-30%
Total	539	430	334	227	- 107	-32%

Middle East: FSV by sector (\*)

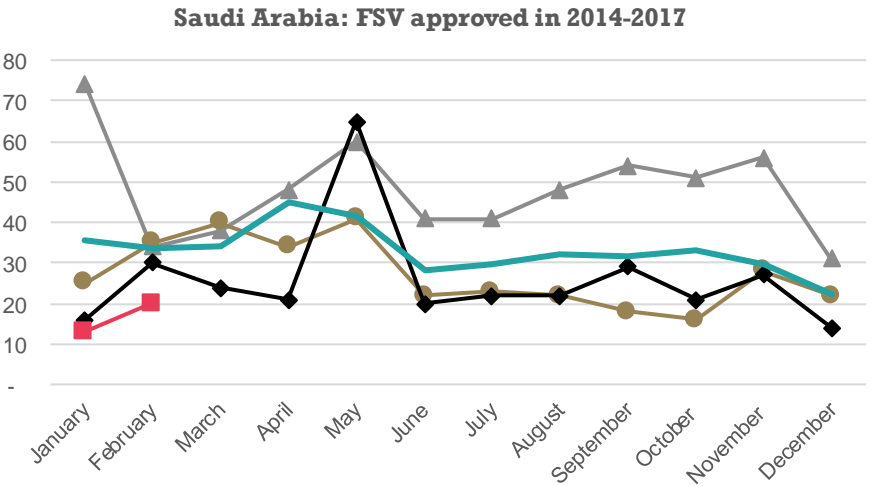
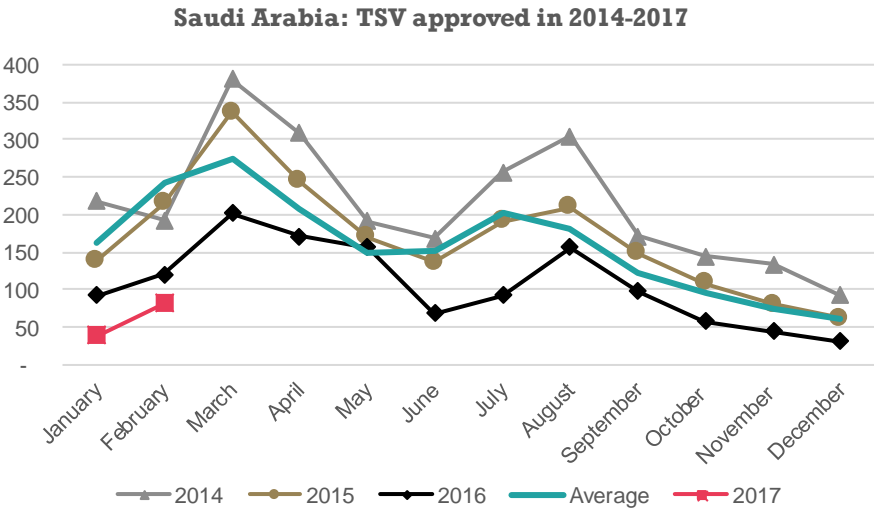
	2014 YTD	2015 YTD	2016 YTD	2017 YTD	Change Number	Change Percentage
Schools	1	6	4	1	- 3	-75%
ITP	39	2	6	3	- 3	-50%
PTE	44	43	36	39	3	8%
Universities	55	29	53	27	- 26	-49%
Total	139	80	99	70	- 29	-29%

(\*) Please note that numbers by sector may not always add up to the same as the total because sector is not always stated.

Middle East: TSV by region

Region	2014 YTD	2015 YTD	2016 YTD	2017 YTD	Change Number	Change Percentage
Auckland	331	268	217	138	- 79	-36%
Waikato	56	71	26	26	-	0%
Otago	45	26	32	25	- 7	-22%
Canterbury	27	18	20	15	- 5	-25%
Manawatu	15	14	12	10	- 2	-17%
Other	69	41	28	13	- 15	-54%
Total	543	438	335	227	- 108	-32%

- TSV for the YTD 2017 decreased by 43%(-92) compared to the YTD 2016. This is due to restrictions to the Saudi Arabian government’s scholarships programme, which enabled many Saudi Arabians to come to New Zealand for study.
- VSV were 841 on 1 March 2017, a 24% decrease (-261) compared to the same day in 2016.

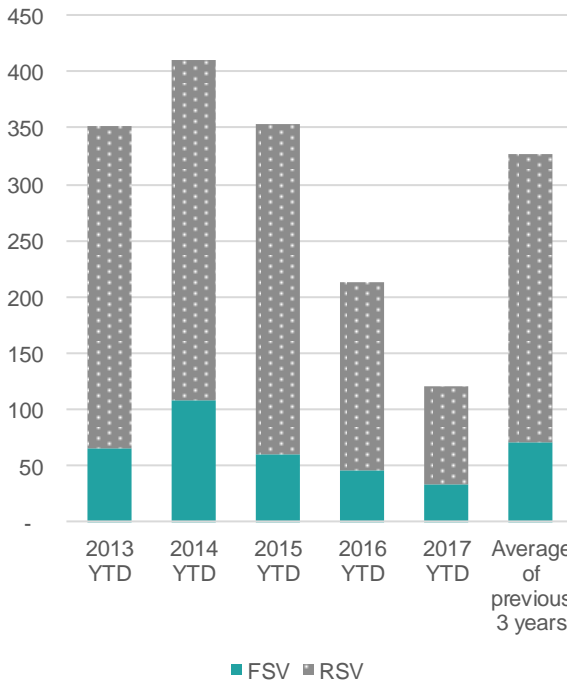


In brief

YTD	FSV	RSV	TSV
Visas	33	88	121
Change No.	- 13	- 79	- 92
Change Percent	-28%	-47%	-43%

Changes are from the YTD 2016 to the YTD 2017

Saudi Arabia: Cumulative FSV and RSV



Saudi Arabia: TSV by sector (\*)

	2014 YTD	2015 YTD	2016 YTD	2017 YTD	Change Number	Change Percentage
Schools	9	15	18	7	- 11	-61%
ITP	99	62	21	11	- 10	-48%
PTE	157	134	69	39	- 30	-43%
Universities	144	140	105	64	- 41	-39%
Total	409	351	213	121	- 92	-43%

Saudi Arabia: FSV by sector (\*)

	2014 YTD	2015 YTD	2016 YTD	2017 YTD	Change Number	Change Percentage
Schools	1	6	4	1	- 3	-75%
ITP	38	-	2	-	- 2	-100%
PTE	41	42	33	29	- 4	-12%
Universities	26	9	7	3	- 4	-57%
Total	106	57	46	33	- 13	-28%

(\*) Please note that numbers by sector may not always add up to the same as the total because sector is not always stated.

Saudi Arabia: TSV by region

Region	2014 YTD	2015 YTD	2016 YTD	2017 YTD	Change Number	Change Percentage
Auckland	275	237	164	90	- 74	-45%
Waikato	37	62	14	9	- 5	-36%
Otago	30	12	12	9	- 3	-25%
Wellington	25	17	8	3	- 5	-63%
Manawatu	12	8	4	5	1	25%
Other	32	18	11	5	- 6	-55%
Total	411	354	213	121	- 92	-43%

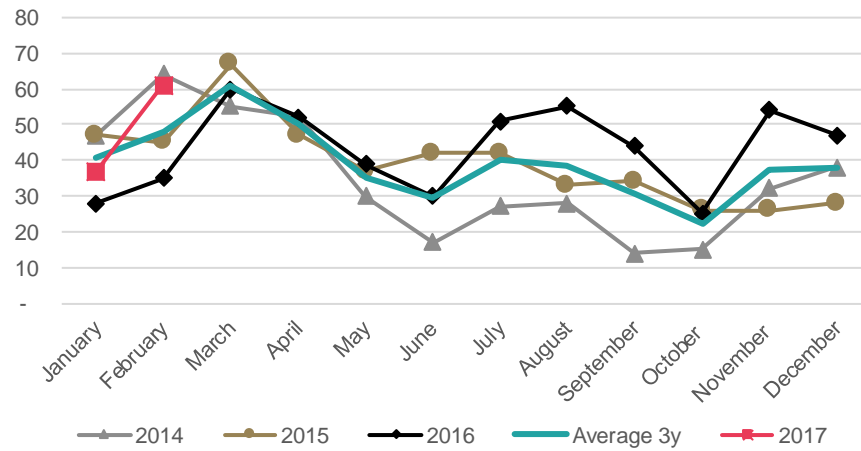
# Trends by sector

---

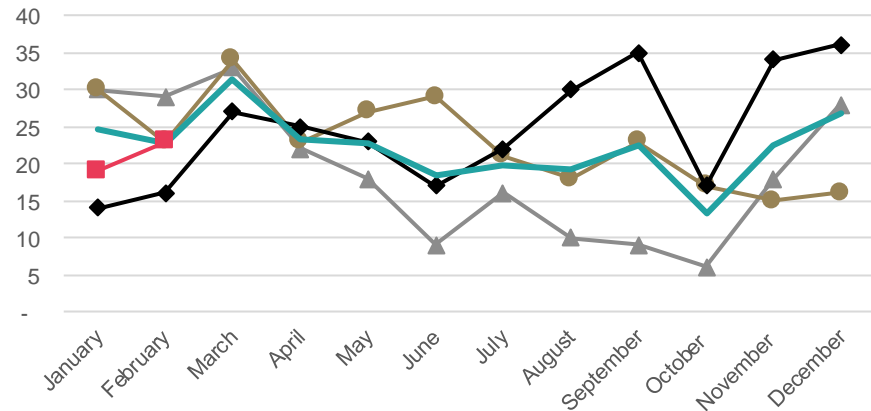


- TSV for the primary school sector have increased by 56% for the YTD 2017 compared to the YTD 2016. At this stage, there is not enough data to undertake further analysis.
- VSV were 636 on 1 March 2017, a 32%(+154) increase on the same day in compared to 1 March 2016.

Primary: TSV approved in 2013-2017



Primary: FSV approved in 2013-2017

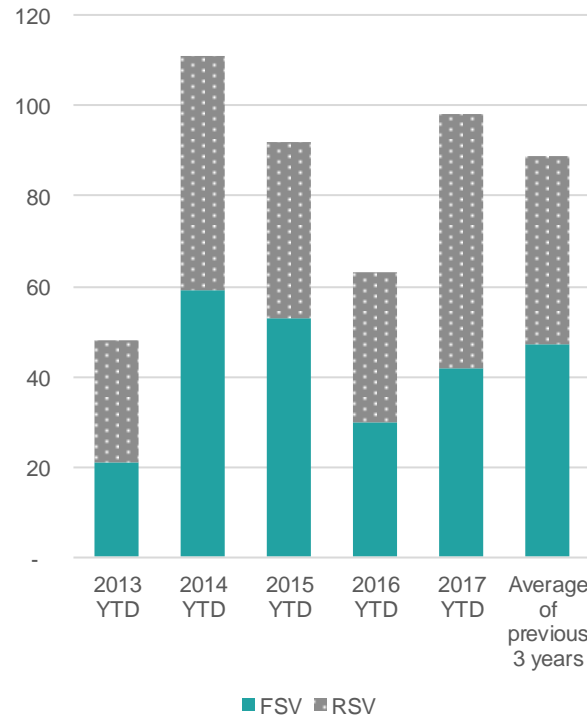


In Brief

YTD	FSV	RSV	TSV
Visas	42	56	98
Change No.	12	23	35
Change Percent	40%	70%	56%

Changes are from the YTD 2016 to the YTD 2017

Primary: Cumulative FSV and RSV



Primary: TSV by country

	2014 YTD	2015 YTD	2016 YTD	2017 YTD	Chg No.	Chg %
Korea	69	45	22	36	14	64%
China	9	13	16	39	23	144%
Japan	14	8	9	8	-1	-11%
Thailand	5	4	4	5	1	25%
Malaysia	3	6	2	-	-2	-100%
Other	11	16	10	10	-	0%
Total	111	92	63	98	35	56%

Primary: FSV by country

	2014 YTD	2015 YTD	2016 YTD	2017 YTD	Chg No.	Chg %
Korea	38	30	7	14	7	100%
China	7	7	10	22	12	120%
Japan	4	-	4	3	-1	-25%
Thailand	4	3	1	-	-1	-100%
Fiji	-	-	2	-	-2	-100%
Other	6	13	6	3	-3	-50%
Total	59	53	30	42	12	40%

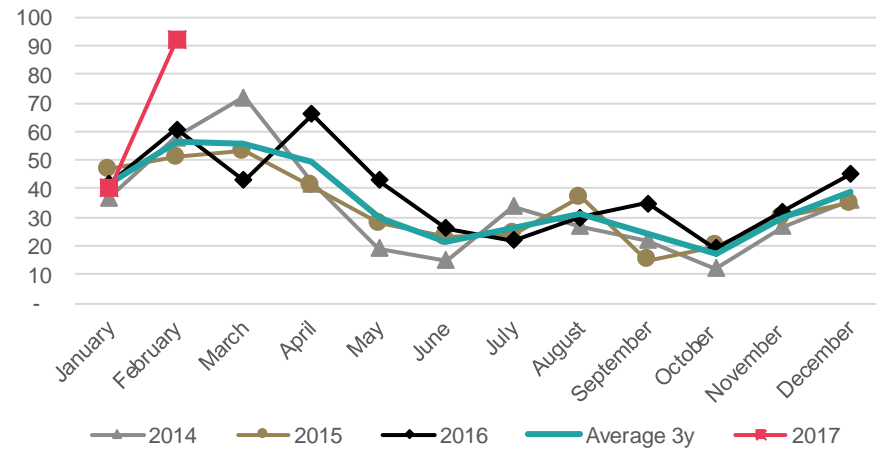
Primary: TSV by region

Region	2014 YTD	2015 YTD	2016 YTD	2017 YTD	Chg No.	Chg %
Auckland	44	43	27	42	15	56%
Canterbury	26	19	6	16	10	167%
Bay of Plenty	22	17	13	18	5	38%
Waikato	7	3	5	11	6	120%
Wellington	4	4	2	2	-	0%
Other	8	6	10	9	-1	-10%
Total	111	92	63	98	35	56%

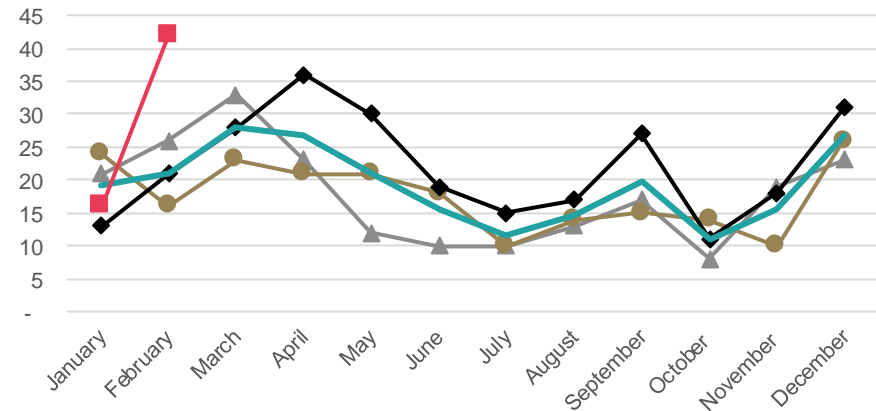


- TSV for the intermediate school sector increased by 28% for the YTD 2017 compared to the YTD 2016. The main increase was for China (+138%, 29).
- VSV were 511 on 1 March 2017, a 7%(+32) increase on the same day in 2016.

Intermediate: TSV approved in 2013-2017



Intermediate: FSV approved in 2013-2017

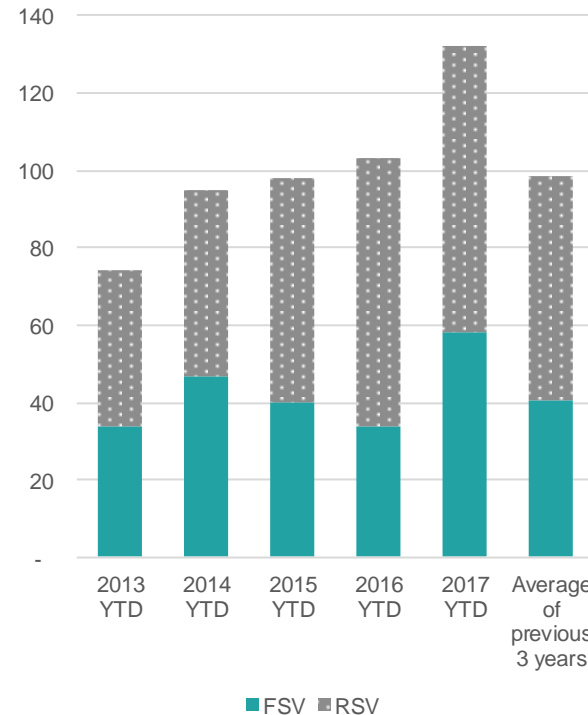


In Brief

YTD	FSV	RSV	TSV
Visas	58	74	132
Change No.	24	5	29
Change Percent	71%	7%	28%

Changes are from the YTD 2016 to the YTD 2017

Intermediate: Cumulative FSV and RSV



Intermediate: TSV by country

	2014 YTD	2015 YTD	2016 YTD	2017 YTD	Chg No.	Chg %
Korea	66	57	53	48	- 5	-9%
China	10	19	21	50	29	138%
Japan	5	6	6	7	1	17%
Thailand	2	6	5	8	3	60%
Taiwan	3	1	8	5	- 3	-38%
Other	9	9	10	14	4	40%
Total	95	98	103	132	29	28%

Intermediate: FSV by country

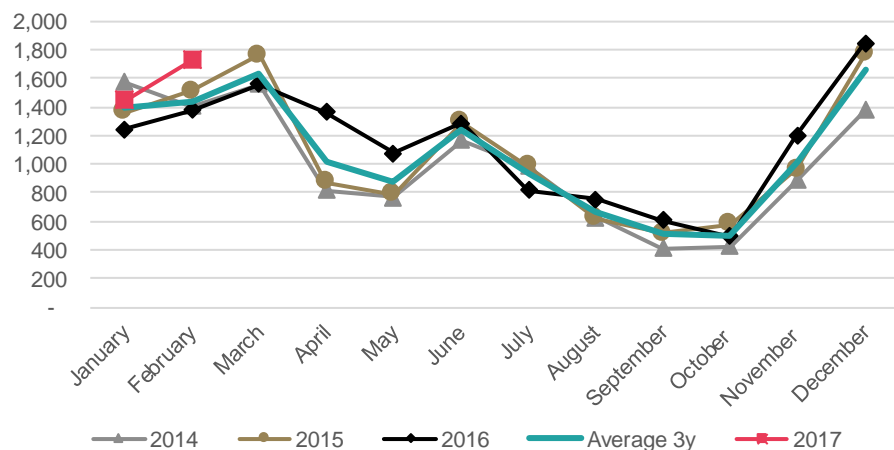
	2014 YTD	2015 YTD	2016 YTD	2017 YTD	Chg No.	Chg %
Korea	35	25	17	20	3	18%
China	4	8	9	28	19	211%
Japan	1	1	1	3	2	200%
Taiwan	1	-	2	-	- 2	-100%
Thailand	1	-	-	2	2	
Other	5	6	5	5	-	0%
Total	47	40	34	58	24	71%

Intermediate: TSV by region

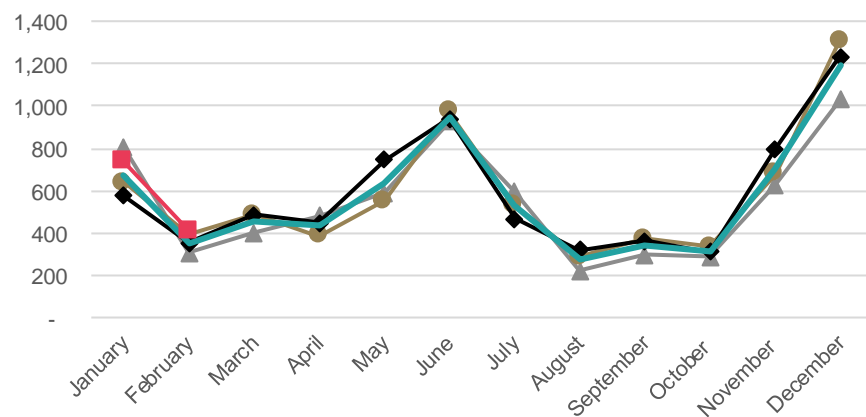
Region	2014 YTD	2015 YTD	2016 YTD	2017 YTD	Chg No.	Chg %
Auckland	62	58	67	91	24	36%
Bay of Plenty	17	21	26	21	- 5	-19%
Canterbury	10	7	4	7	3	75%
Waikato	-	4	1	5	4	400%
Hawke's Bay	1	2	1	3	2	200%
Other	5	6	4	5	1	25%
Total	95	98	103	132	29	28%

- The secondary schools sector showed a 21%(+554) increase in TSV for the YTD 2017, with RSV increasing by 20%(+338) and FSV increasing by 23% (+216) compared to the YTD 2016. FSV increased for Brazil(+68%,+78), China(+34%, +69), and Chile(+756%,+68), while RSV increases were for China(26%,+179) and Korea (+27%, +75).
- VSV for secondary school students were 13,758 on 1 March 2017, which was a 12% (+1433) increase on the same date last year.

Secondary: TSV approved in 2013-2017



Secondary: FSV approved in 2013-2017

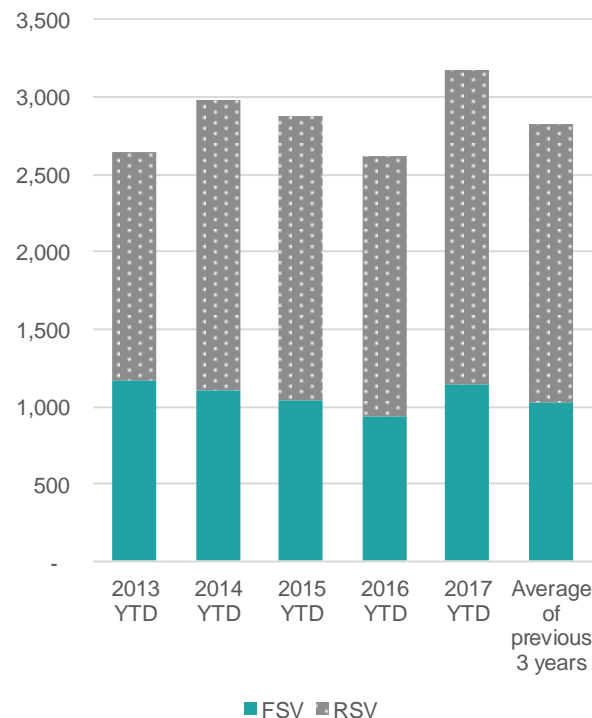


In Brief

YTD	FSV	RSV	TSV
Visas	1,146	2,031	3,177
Change No.	216	338	554
Change Percent	23%	20%	21%

Changes are from the YTD 2016 to the YTD 2017

Secondary: Cumulative FSV and RSV



Secondary: TSV by country

	2014 YTD	2015 YTD	2016 YTD	2017 YTD	Chg No.	Chg %
China	725	876	891	1,139	248	28%
Korea	507	436	383	460	77	20%
Thailand	393	494	361	366	5	1%
Japan	346	269	262	304	42	16%
Brazil	277	154	117	195	78	67%
Other	734	648	609	713	104	17%
Total	2,982	2,877	2,623	3,177	554	21%

Secondary: FSV by country

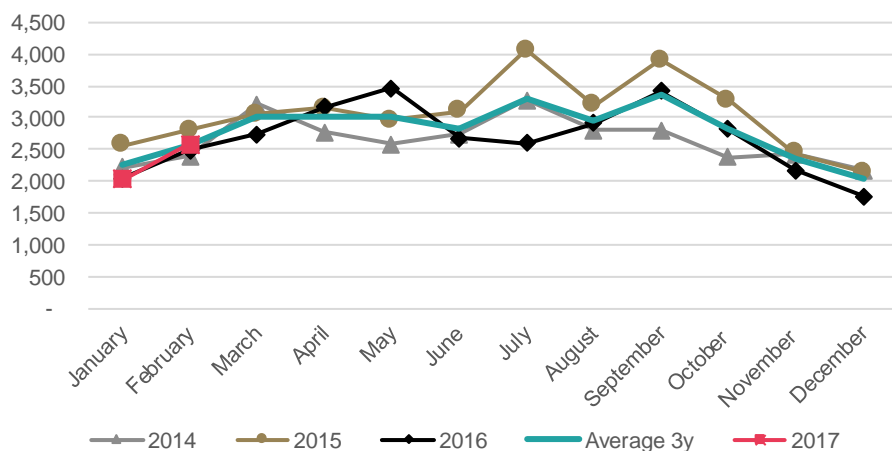
	2014 YTD	2015 YTD	2016 YTD	2017 YTD	Chg No.	Chg %
China	183	234	205	274	69	34%
Brazil	273	149	114	192	78	68%
Korea	103	98	101	103	2	2%
Japan	98	82	95	117	22	23%
Thailand	91	142	85	77	-8	-9%
Other	358	329	330	383	53	16%
Total	1,106	1,034	930	1,146	216	23%

Secondary: TSV by region

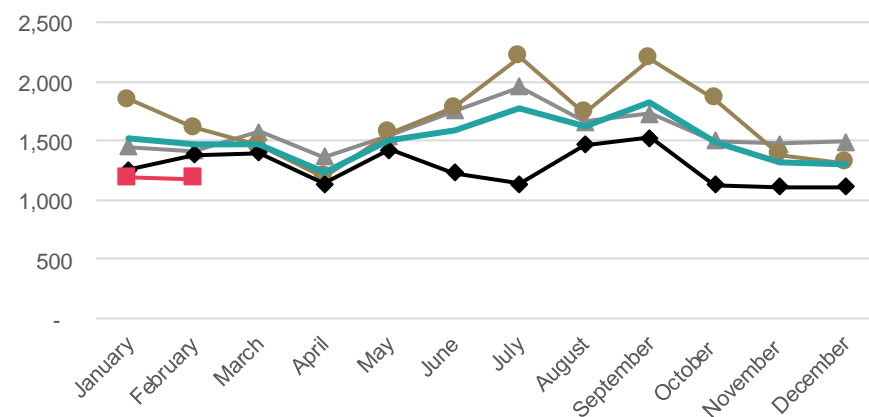
Region	2014 YTD	2015 YTD	2016 YTD	2017 YTD	Chg No.	Chg %
Auckland	1,632	1,664	1,574	1,821	247	16%
Canterbury	304	259	262	355	93	35%
Wellington	212	164	119	187	68	57%
Bay of Plenty	155	177	149	212	63	42%
Waikato	154	123	108	157	49	45%
Other	525	490	411	445	34	8%
Total	2,982	2,877	2,623	3,177	554	21%

- The PTE sector was stable with a 2%(+ 70) increase in TSV for the YTD 2017. RSV increased by 18%(+ 343). This was driven by increases in RSV for China(+18%, +154) and India (23%,+98).
- FSV decreased by 10% (-273) compared to the YTD 2016. The largest FSV decrease came from India (-62%, +475), while FSV for China increased (+14%, +55)
- VSV for PTE students were 25,119 on 1 March 2017, which was a 10% (-4,961) decrease on the same date last year compared to 1 March 2016.

PTE: TSV approved in 2013-2017



PTE: FSV approved in 2013-2017

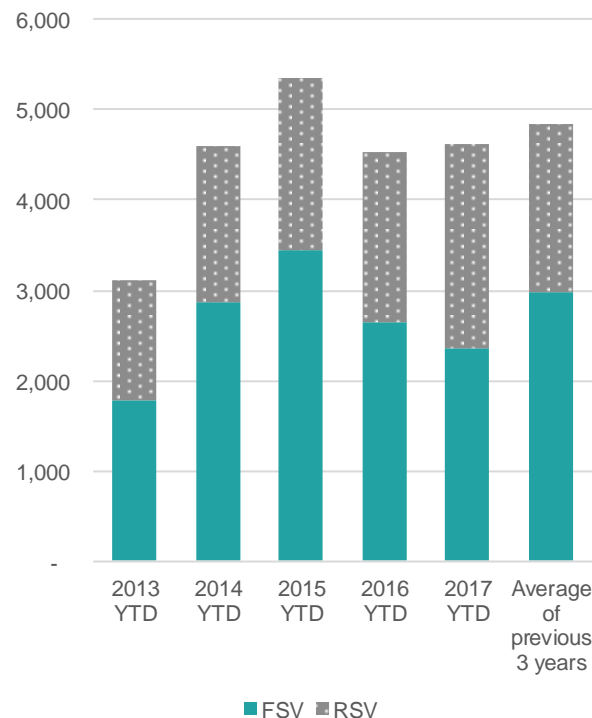


In Brief

YTD	FSV	RSV	TSV
Visas	2,369	2,240	4,609
Change No.	- 273	343	70
Change Percent	-10%	18%	2%

Changes are from the YTD 2016 to the YTD 2017

PTE: Cumulative FSV and RSV



PTE: TSV by country

	2014 YTD	2015 YTD	2016 YTD	2017 YTD	Chg No.	Chg %
China	930	1,125	1,241	1,450	209	17%
India	1,712	2,101	1,198	821	- 377	-31%
Korea	336	320	348	314	- 34	-10%
Brazil	100	213	227	294	67	30%
Japan	209	157	229	181	- 48	-21%
Other	1,316	1,444	1,296	1,549	253	20%
Total	4,603	5,360	4,539	4,609	70	2%

PTE: FSV by country

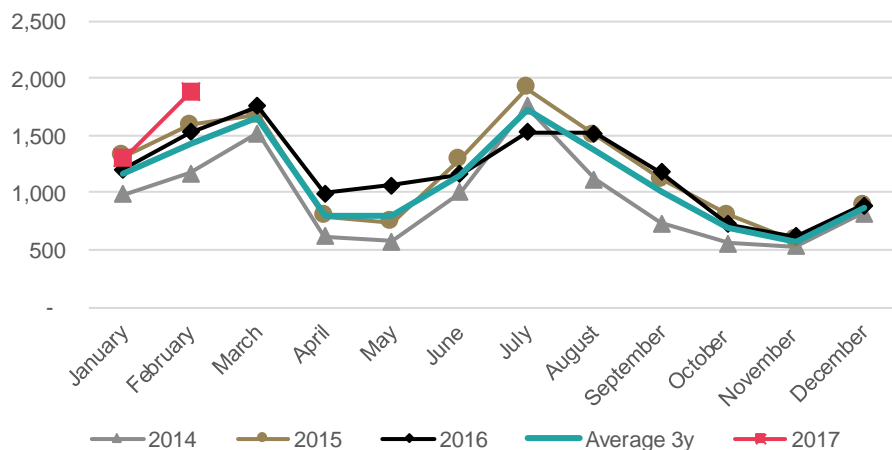
	2014 YTD	2015 YTD	2016 YTD	2017 YTD	Chg No.	Chg %
India	1,309	1,652	765	290	- 475	-62%
China	282	363	392	447	55	14%
Brazil	90	187	196	239	43	22%
Korea	178	177	198	196	- 2	-1%
Japan	164	120	190	145	- 45	-24%
Other	839	952	901	1,052	151	17%
Total	2,862	3,451	2,642	2,369	- 273	-10%

PTE: TSV by region

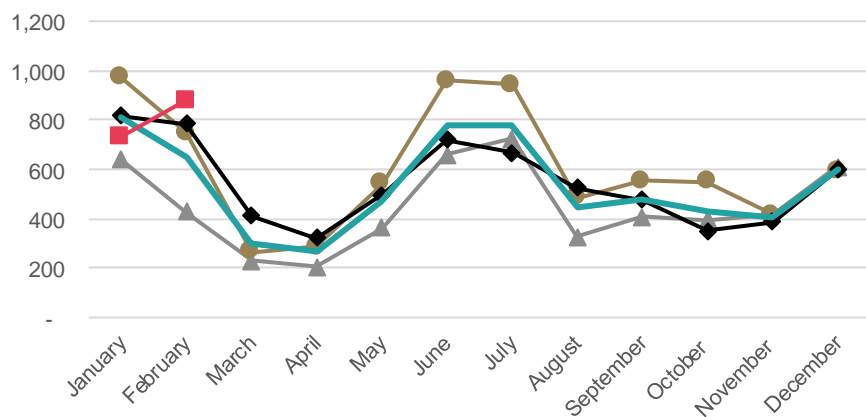
Region	2014 YTD	2015 YTD	2016 YTD	2017 YTD	Chg No.	Chg %
Auckland	3,626	4,260	3,600	3,682	82	2%
Canterbury	395	389	349	390	41	12%
Bay of Plenty	141	188	131	107	- 24	-18%
Wellington	88	133	89	117	28	31%
Waikato	84	104	87	69	- 18	-21%
Other	269	286	283	244	- 39	-14%
Total	4,603	5,360	4,539	4,609	70	2%

- The ITP sector showed a 17%(+ 453) increase in TSV for the YTD 2017. RSV increased by 39%(+ 444) and FSV were flat(+1%, +9) compared to the YTD 2016. The increase in RSV comes from China (+36%, +222) and India (+79%, +160).
- VSV were 13,259 on 1 March 2017, which was a 1% (+177) increase compared to 1 March 2016.

ITP: TSV approved in 2013-2017



ITP: FSV approved in 2013-2017

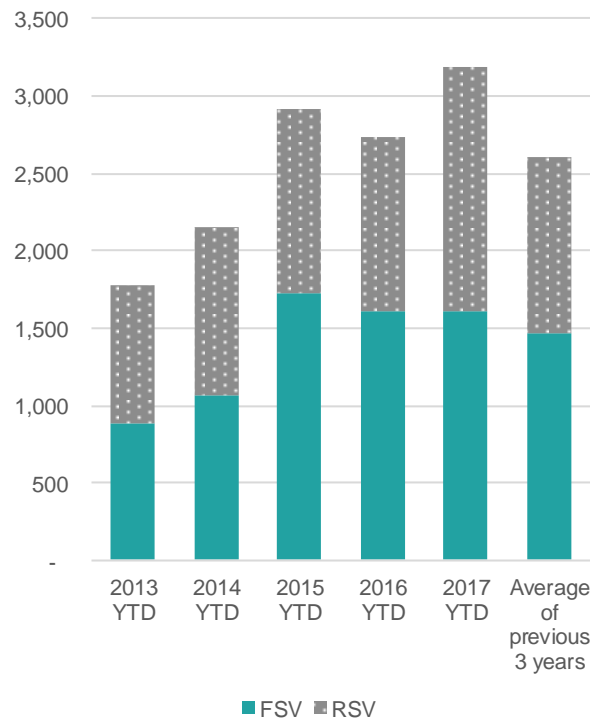


## In Brief

YTD	FSV	RSV	TSV
Visas	1,611	1,573	3,184
Change No.	9	444	453
Change Percent	1%	39%	17%

Changes are from the YTD 2016 to the YTD 2017

## ITP: Cumulative FSV and RSV



## ITP: TSV by country

	2014 YTD	2015 YTD	2016 YTD	2017 YTD	Chg No.	Chg %
India	619	1,257	1,123	1,289	166	15%
China	771	873	837	1,087	250	30%
Korea	64	64	66	90	24	36%
Philippines	42	61	57	68	11	19%
Sri Lanka	36	42	51	76	25	49%
Other	625	615	597	574	- 23	-4%
Total	2,157	2,912	2,731	3,184	453	17%

## ITP: FSV by country

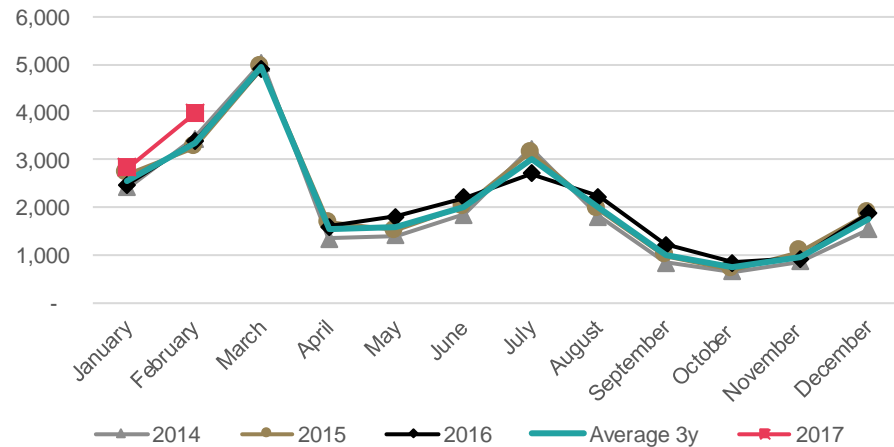
	2014 YTD	2015 YTD	2016 YTD	2017 YTD	Chg No.	Chg %
India	508	1,102	921	927	6	1%
China	171	199	214	242	28	13%
Philippines	27	48	49	48	- 1	-2%
Sri Lanka	23	32	42	62	20	48%
Japan	31	28	50	21	- 29	-58%
Other	307	313	326	311	- 15	-5%
Total	1,067	1,722	1,602	1,611	9	1%

## ITP: TSV by region

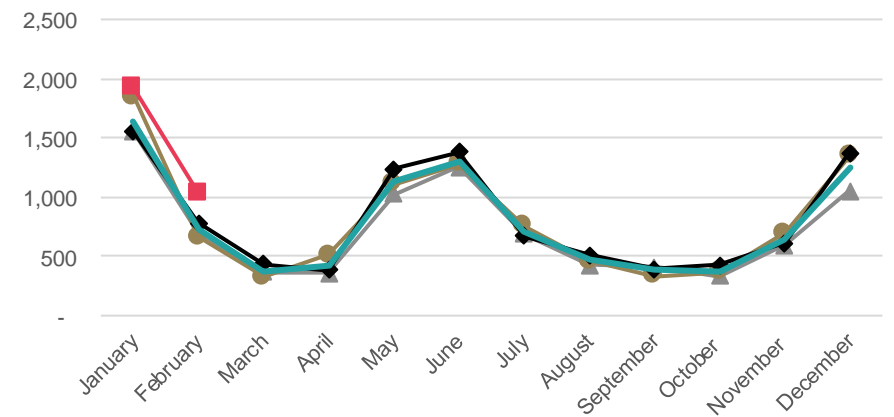
Region	2014 YTD	2015 YTD	2016 YTD	2017 YTD	Chg No.	Chg %
Auckland	939	1,342	1,083	1,363	280	26%
Canterbury	264	328	334	354	20	6%
Waikato	222	245	270	308	38	14%
Wellington	159	225	250	263	13	5%
Bay of Plenty	191	225	221	227	6	3%
Other	382	547	573	669	96	17%
Total	2,157	2,912	2,731	3,184	453	17%

- The universities sector showed a 16%(+ 925) increase in TSV for the YTD 2017, with RSV increasing by 8%(+ 229) and FSV increasing by 27% (+626) compared to the YTD 2016.
- The increase in FSV was came from the USA (+41%,+224), India (+53%, +131), and Viet Nam (+177%, +69), while the increase in RSV came from China (+13%, +270).
- VSV for universities were 25,142 on 1 March 2017, which was a 10% (+2,235) increase on the same date last year compared to 1 March 2016.

Universities: TSV approved in 2013-2017



Universities: FSV approved in 2013-2017

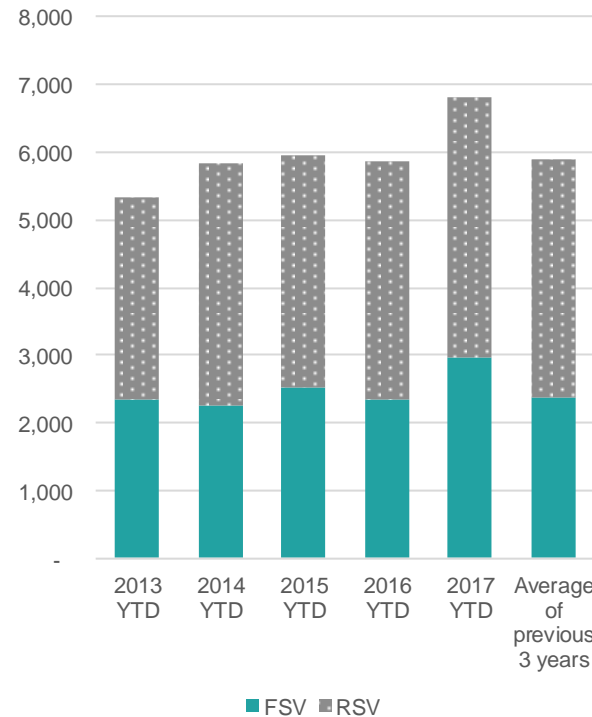


In Brief

YTD	FSV	RSV	TSV
Visas	2,963	3,831	6,794
Change No.	626	299	925
Change Percent	27%	8%	16%

Changes are from the YTD 2016 to the YTD 2017

Universities: Cumulative FSV and RSV



Universities: TSV by country

	2014 YTD	2015 YTD	2016 YTD	2017 YTD	Chg No.	Chg %
China	2,258	2,270	2,441	2,695	254	10%
USA	603	883	614	836	222	36%
India	299	276	322	476	154	48%
Malaysia	351	268	337	315	- 22	-7%
Japan	184	199	184	222	38	21%
Other	2,150	2,066	1,971	2,250	279	14%
Total	5,845	5,962	5,869	6,794	925	16%

Universities: FSV by country

	2014 YTD	2015 YTD	2016 YTD	2017 YTD	Chg No.	Chg %
USA	556	818	549	773	224	41%
China	432	429	432	416	- 16	-4%
India	219	203	245	376	131	53%
Malaysia	108	104	174	150	- 24	-14%
Japan	82	115	93	140	47	51%
Other	862	844	844	1,108	264	31%
Total	2,259	2,513	2,337	2,963	626	27%

Universities: TSV by region

Region	2014 YTD	2015 YTD	2016 YTD	2017 YTD	Chg No.	Chg %
Auckland	2,926	2,932	2,913	3,373	460	16%
Canterbury	831	898	979	1,143	164	17%
Wellington	731	762	748	810	62	8%
Otago	749	758	638	785	147	23%
Waikato	340	329	355	362	7	2%
Other	268	283	236	321	85	36%
Total	5,845	5,962	5,869	6,794	925	16%



# Trends by region

---



# A note about regional data

---

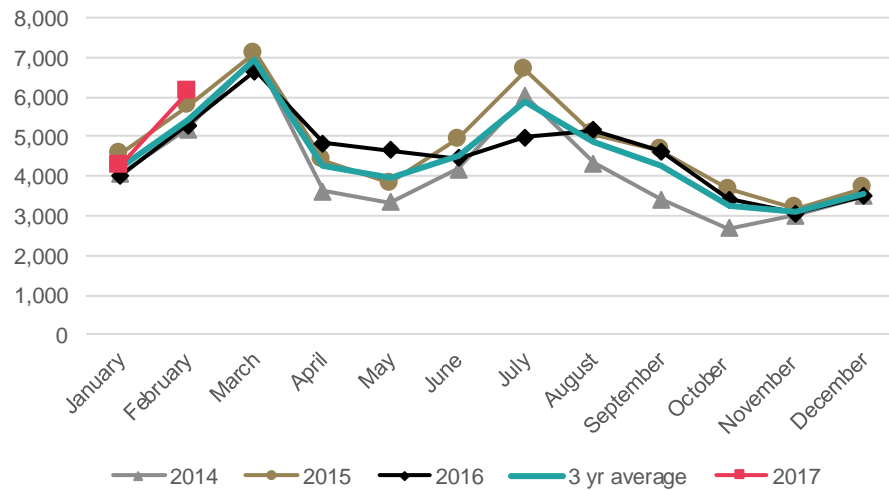
Due to data improvement processes within Immigration New Zealand, there have been some changes to region-based data for visas.

Numbers in these slides may have changed from slides previously produced.

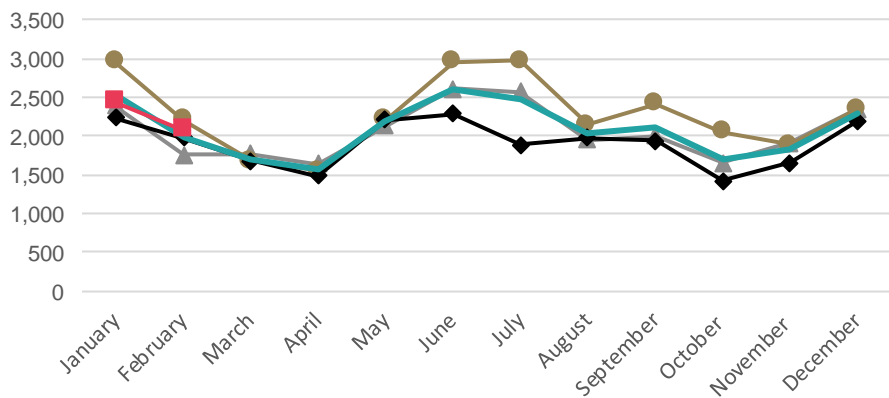
This data should be treated with caution, therefore the number and percentage changes should be considered approximates.

- Auckland, New Zealand's most popular international education destination, was up 12% in the YTD 2017 TSV compared to the YTD 2016. There was an increase in FSV for the universities and schools sectors. RSV increased across all sectors, led by a rise in visas in the PTE and ITP sectors. This was mainly driven by an increase in the number of students from China.
- VSV for Auckland was stable on 1 March 2017, declining by 2% (-1,156) since March 1 2016 to reach 47,518.

Auckland: TSV approved in 2014-2017



Auckland: FSV approved in 2014-2017

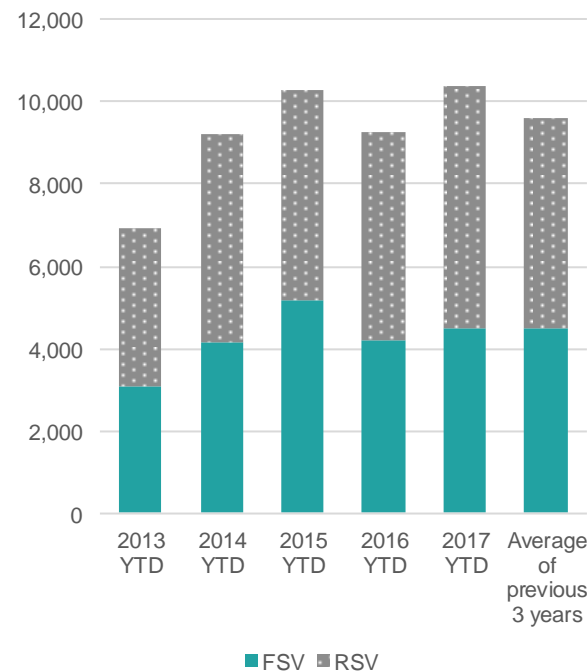


In brief

YTD	FSV	RSV	TSV
Visas	4,505	5,873	10,378
Change No.	296	814	1,110
Change Percent	7%	16%	12%

Changes are from the YTD 2016 to the YTD 2017

Auckland: Cumulative FSV and RSV



Auckland: TSV by sector (\*)

	2014 YTD	2015 YTD	2016 YTD	2017 YTD	Change Number	Change Percentage
Schools	1,738	1,765	1,668	1,954	286	17%
ITP	939	1,342	1,083	1,363	280	26%
PTE	3,626	4,260	3,600	3,682	82	2%
Universities	2,926	2,932	2,913	3,373	460	16%
Total	9,229	10,299	9,264	10,372	1,108	12%

Auckland: FSV by sector (\*)

	2014 YTD	2015 YTD	2016 YTD	2017 YTD	Change Number	Change Percentage
Schools	549	604	514	618	104	20%
ITP	419	802	656	726	70	11%
PTE	2,199	2,696	2,005	1,814	- 191	-10%
Universities	968	1,058	1,030	1,346	316	31%
Total	4,135	5,160	4,205	4,504	299	7%

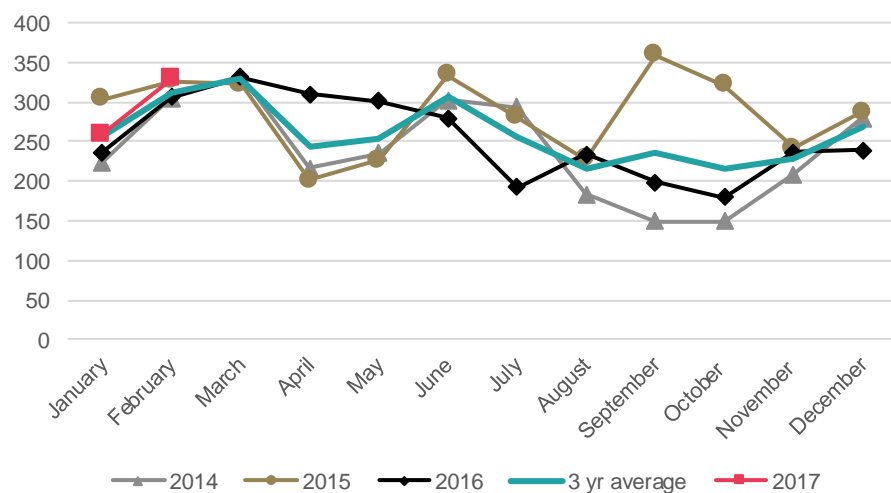
(\*) Please note that numbers by sector may not always add up to the same as the total because sector is not always stated.

Auckland: TSV by market

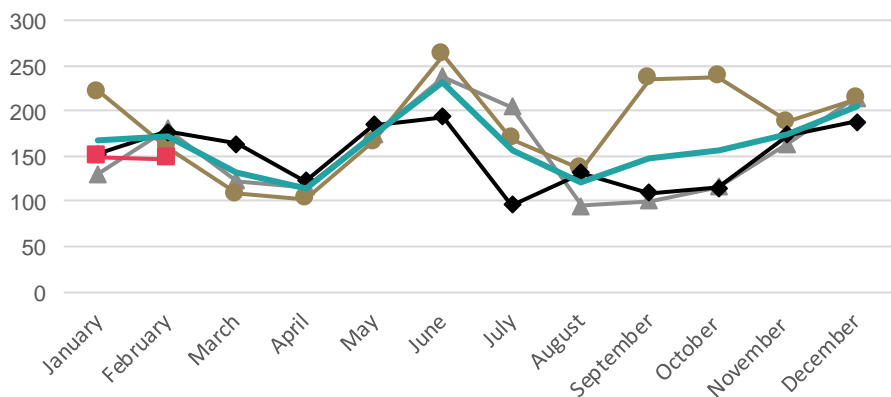
Country	2014 YTD	2015 YTD	2016 YTD	2017 YTD	Change Number	Change Percentage
China	3,122	3,396	3,589	4,214	625	17%
India	1,808	2,474	1,579	1,538	- 41	-3%
Korea	843	760	727	730	3	0%
Thailand	331	353	276	368	92	33%
Japan	352	332	324	319	- 5	-2%
Other	2,776	2,990	2,773	3,209	436	16%
Total	9,232	10,305	9,268	10,378	1,110	12%

- There was an 8% increase in TSV for the Bay of Plenty for the YTD 2017 compared to the YTD 2016. Growth came from the schools sector (+34%, +63) while the other sectors were flat or declining. The India market declined (-29%, +63), especially in the PTE sector (-47%, -17) while those for China increased (+31%, +36).
- VSV for 1 March 2017 were 2,970 and have declined by 7% (-239) since 1 March 2016.

Bay of Plenty: TSV approved in 2014-2017



Bay of Plenty: FSV approved in 2014-2017

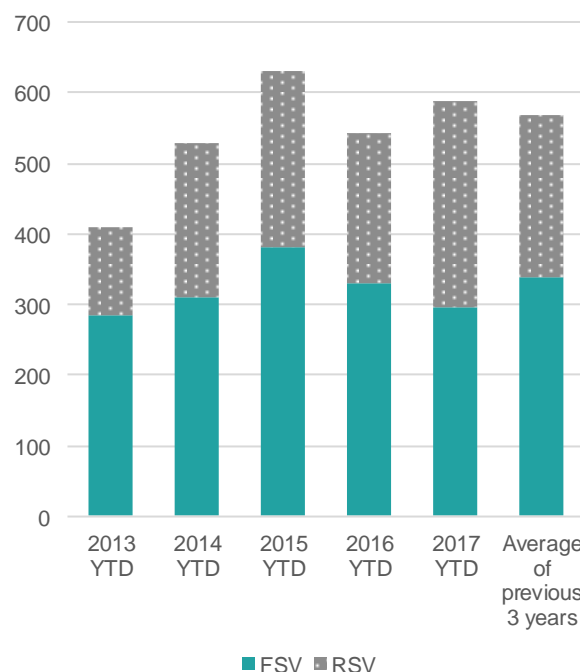


In brief

YTD	FSV	RSV	TSV
Visas	296	293	589
Change No.	- 33	79	46
Change Percent	-10%	37%	8%

Changes are from the YTD 2016 to the YTD 2017

Bay of Plenty: Cumulative FSV and RSV



Bay of Plenty: TSV by sector (\*)

	2014 YTD	2015 YTD	2016 YTD	2017 YTD	Change Number	Change Percentage
Schools	194	215	188	251	63	34%
ITP	191	225	221	227	6	3%
PTE	141	188	131	107	- 24	-18%
Universities	3	3	3	4	1	33%
Total	529	631	543	589	46	8%

Bay of Plenty: FSV by sector (\*)

	2014 YTD	2015 YTD	2016 YTD	2017 YTD	Change Number	Change Percentage
Schools	75	86	69	92	23	33%
ITP	142	168	174	136	- 38	-22%
PTE	91	126	84	64	- 20	-24%
Universities	2	1	2	4	2	100%
Total	310	381	329	296	- 33	-10%

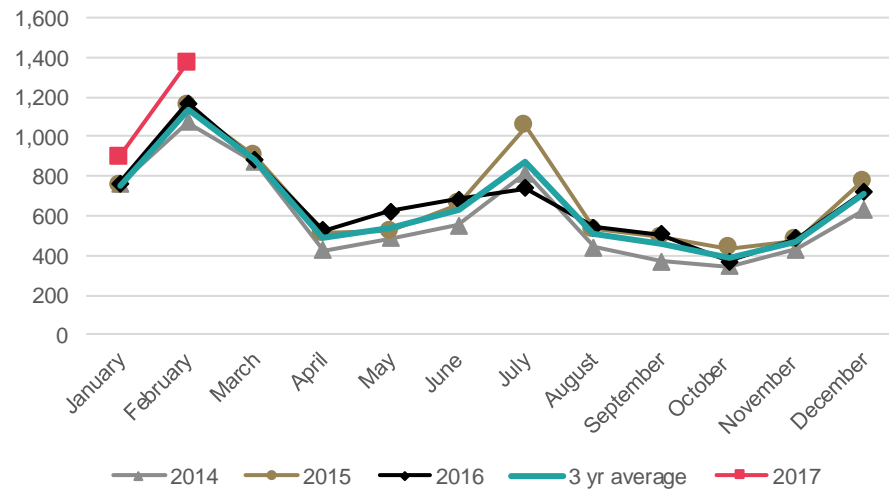
(\*) Please note that numbers by sector may not always add up to the same as the total because sector is not always stated.

Bay of Plenty: TSV by market

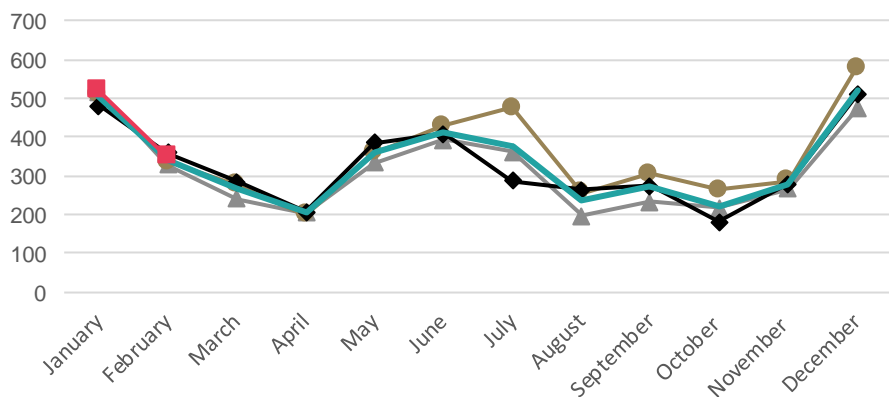
Country	2014 YTD	2015 YTD	2016 YTD	2017 YTD	Change Number	Change Percentage
India	203	293	233	165	- 68	-29%
Korea	118	108	115	151	36	31%
Japan	38	31	39	35	- 4	-10%
Philippines	12	30	32	39	7	22%
China	22	26	19	49	30	158%
Other	136	143	105	150	45	43%
Total	529	631	543	589	46	8%

- There has been an 17% increase in TSV in the 2017 YTD compared to the YTD 2016. This is driven by an increase in RSV across all sectors. FSV were flat. The increase in FSV for the universities and schools sectors were balanced by decreased FSV for ITP and PTE sectors.
- The number of VSV for Canterbury on March 1 2017 was 7,727, which is stable compared to 1 March 2016 (+2%, +115).

Canterbury: TSV approved in 2014-2017



Canterbury: FSV approved in 2014-2017

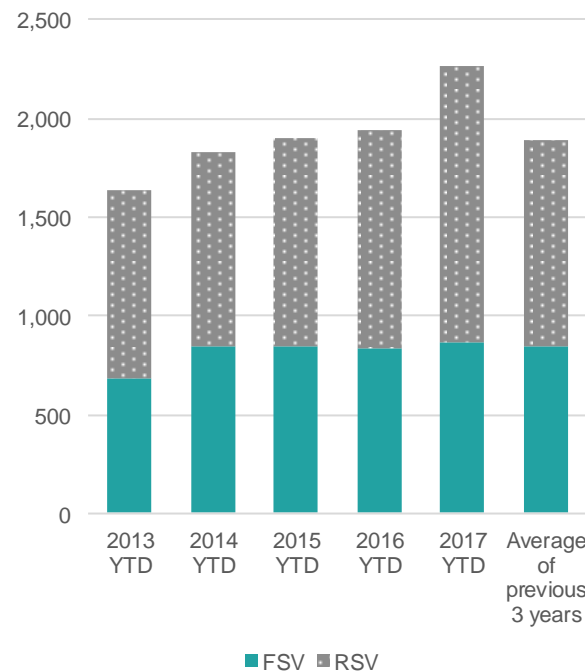


In brief

YTD	FSV	RSV	TSV
Visas	865	1,400	2,265
Change No.	28	302	330
Change Percent	3%	28%	17%

Changes are from the YTD 2016 to the YTD 2017

Canterbury: Cumulative FSV and RSV



Canterbury: TSV by sector (\*)

	2014 YTD	2015 YTD	2016 YTD	2017 YTD	Change Number	Change Percentage
Schools	340	285	272	378	106	39%
ITP	264	328	334	354	20	6%
PTE	395	389	349	390	41	12%
Universities	831	898	979	1,143	164	17%
Total	1,830	1,900	1,934	2,265	331	17%

Canterbury: FSV by sector (\*)

	2014 YTD	2015 YTD	2016 YTD	2017 YTD	Change Number	Change Percentage
Schools	151	110	106	174	68	64%
ITP	116	145	160	112	- 48	-30%
PTE	281	261	233	195	- 38	-16%
Universities	294	326	338	384	46	14%
Total	842	842	837	865	28	3%

(\*) Please note that numbers by sector may not always add up to the same as the total because sector is not always stated.

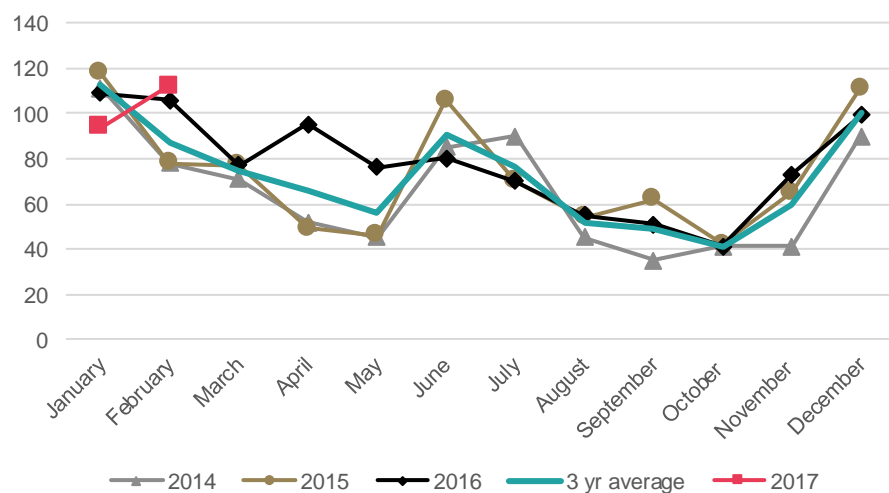
Canterbury: TSV by market

Country	2014 YTD	2015 YTD	2016 YTD	2017 YTD	Change Number	Change Percentage
China	563	713	707	904	197	28%
India	252	289	311	281	- 30	-10%
Japan	164	102	133	158	25	19%
USA	100	135	88	106	18	20%
Thailand	97	111	99	96	- 3	-3%
Other	655	553	597	720	123	21%
Total	1,831	1,903	1,935	2,265	330	17%

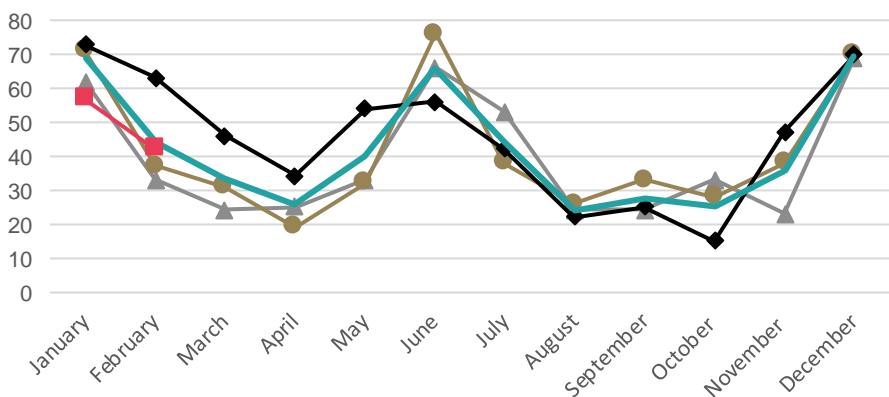


- There has been a 4%(-9) decrease in TSV for the YTD 2017 compared to the YTD 2016. Most of this decrease has been in the FSV for the PTE sector.
- The number of VSV for March 1 2017 is 855 which is stable since the same day in 2016 (+1%, +11).

Hawke's Bay: TSV approved in 2014-2017



Hawke's Bay: FSV approved in 2014-2017

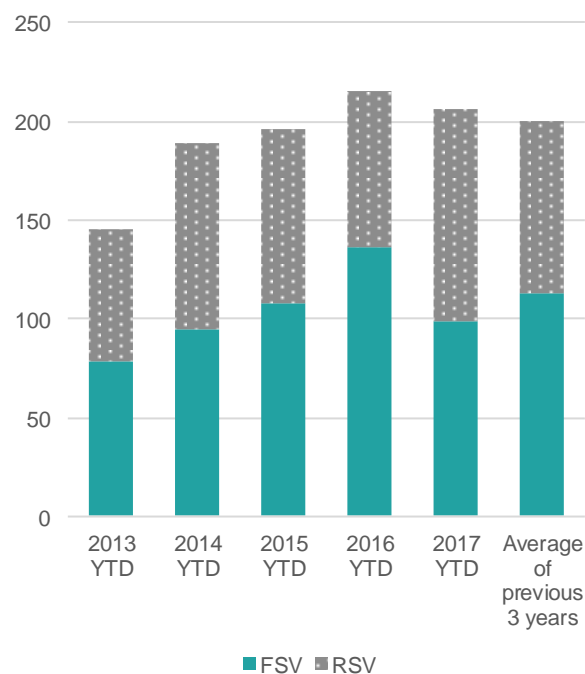


In brief

YTD	FSV	RSV	TSV
Visas	99	107	206
Change No.	- 37	28	- 9
Change Percent	-27%	35%	-4%

Changes are from the YTD 2016 to the YTD 2017

Hawke's Bay: Cumulative FSV and RSV



Hawke's Bay: TSV by sector (\*)

	2014 YTD	2015 YTD	2016 YTD	2017 YTD	Change Number	Change Percentage
Schools	92	74	64	68	4	6%
ITP	76	85	94	116	22	23%
PTE	21	37	57	22	- 35	-61%
Universities	-	-	-	-	-	
Total	189	196	215	206	- 9	-4%

Hawke's Bay: FSV by sector (\*)

	2014 YTD	2015 YTD	2016 YTD	2017 YTD	Change Number	Change Percentage
Schools	36	26	36	20	- 16	-44%
ITP	41	53	54	66	12	22%
PTE	18	29	46	13	- 33	-72%
Universities	-	-	-	-	-	
Total	95	108	136	99	- 37	-27%

(\*) Please note that numbers by sector may not always add up to the same as the total because sector is not always stated.

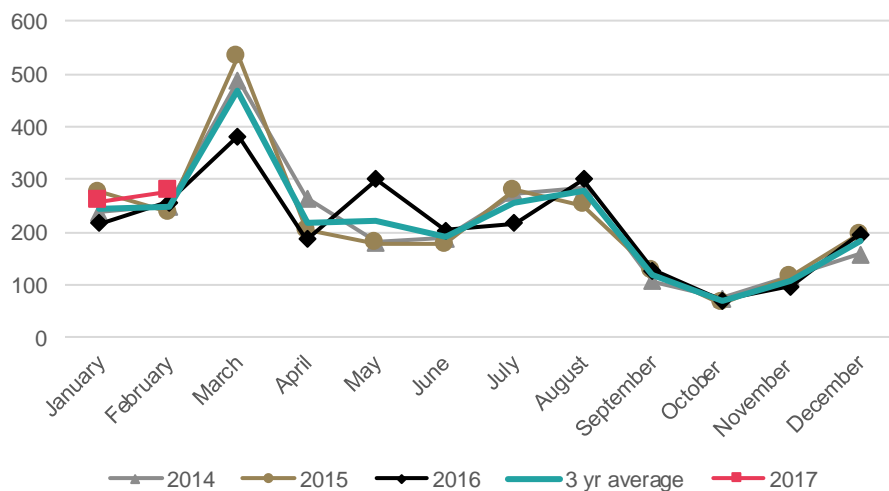
Hawke's Bay: TSV by market

Country	2014 YTD	2015 YTD	2016 YTD	2017 YTD	Change Number	Change Percentage
India	26	56	64	59	- 5	-8%
China	31	32	31	45	14	45%
Japan	23	25	28	22	- 6	-21%
Thailand	16	16	10	14	4	40%
Brazil	10	2	5	3	- 2	-40%
Other	83	65	77	63	- 14	-18%
Total	189	196	215	206	- 9	-4%

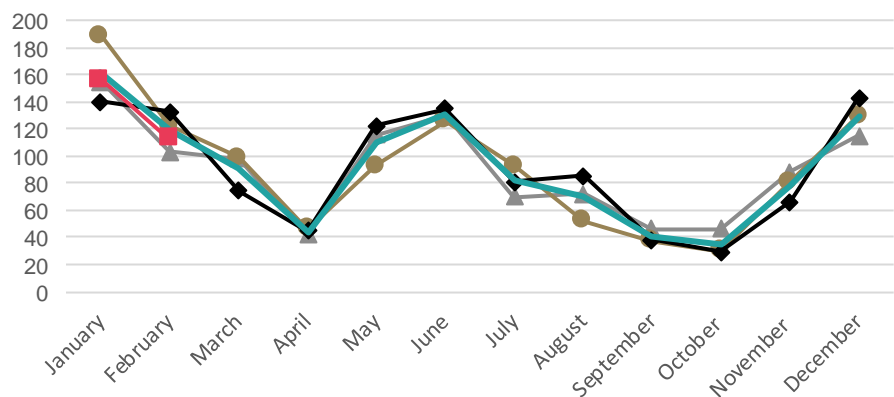


- TSV have increased by 13%(+63) in the YTD 2017 compared to the YTD 2016, led by a TSV increase in the universities sector. FSV for the PTE and ITP sectors have decreased, while both FSV and RSV have increased for the universities sector.
- There were 2,608 VSV for this region on 1 March 2017, which is an increase of 9%(+ 214) since the same day in 2016.

Manawatu: TSV approved in 2014-2017



Manawatu: FSV approved in 2014-2017

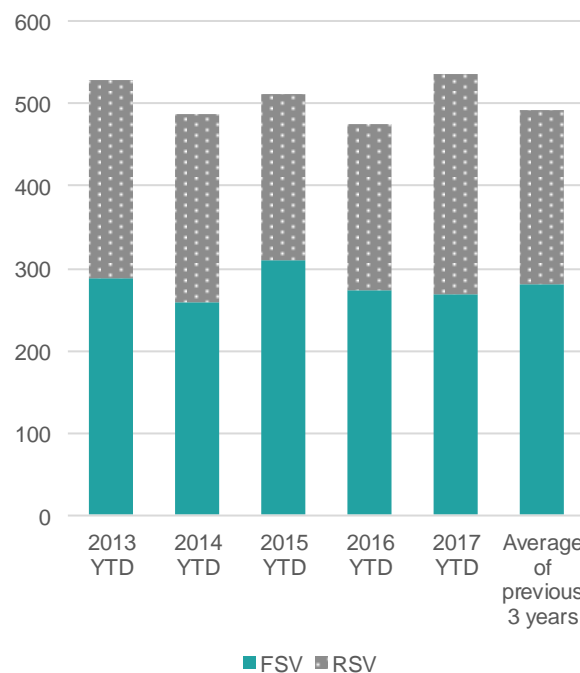


In brief

YTD	FSV	RSV	TSV
Visas	269	268	537
Change No.	- 4	67	63
Change Percent	-1%	33%	13%

Changes are from the YTD 2016 to the YTD 2017

Manawatu: Cumulative FSV and RSV



Manawatu: TSV by sector (\*)

	2014 YTD	2015 YTD	2016 YTD	2017 YTD	Change Number	Change Percentage
Schools	116	138	105	109	4	4%
ITP	30	26	64	54	- 10	-16%
PTE	82	81	76	57	- 19	-25%
Universities	259	266	229	317	88	38%
Total	487	511	474	537	63	13%

Manawatu: FSV by sector (\*)

	2014 YTD	2015 YTD	2016 YTD	2017 YTD	Change Number	Change Percentage
Schools	63	84	52	47	- 5	-10%
ITP	15	16	42	34	- 8	-19%
PTE	70	62	62	38	- 24	-39%
Universities	110	148	117	150	33	28%
Total	258	310	273	269	- 4	-1%

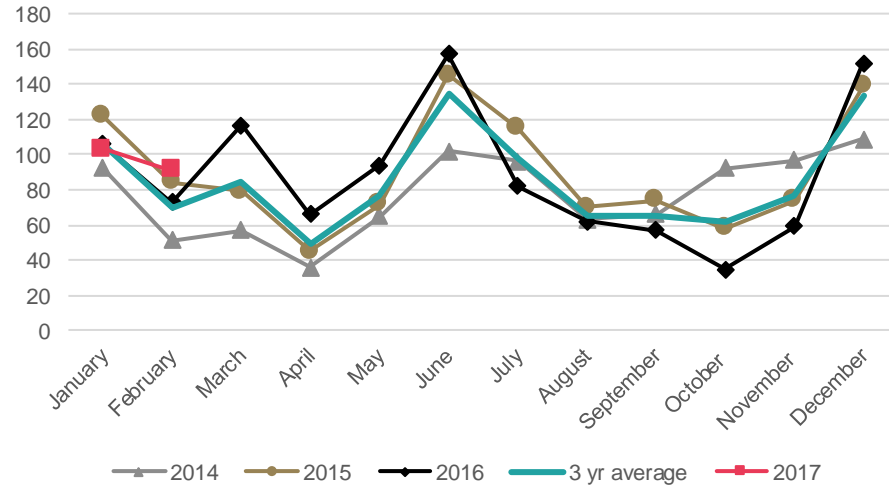
(\*) Please note that numbers by sector may not always add up to the same as the total because sector is not always stated.

Manawatu: TSV by market

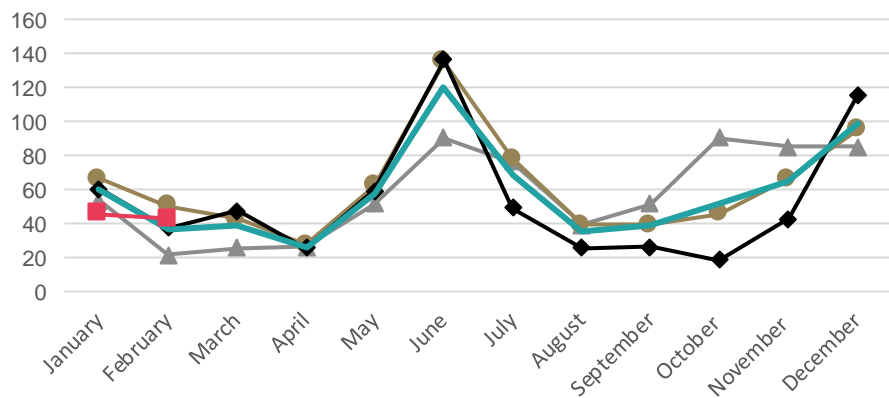
Country	2014 YTD	2015 YTD	2016 YTD	2017 YTD	Change Number	Change Percentage
China	119	102	118	143	25	21%
Japan	49	32	55	53	- 2	-4%
India	27	44	51	57	6	12%
Thailand	54	93	20	19	- 1	-5%
USA	29	54	28	32	4	14%
Other	209	187	202	233	31	15%
Total	487	512	474	537	63	13%

- There has been a 8% increase in TSV in Nelson the YTD 2017 compared to the YTD 2016. At this stage, there is not enough data to undertake further analysis.

Nelson: TSV approved in 2014-2017



Nelson: FSV approved in 2014-2017

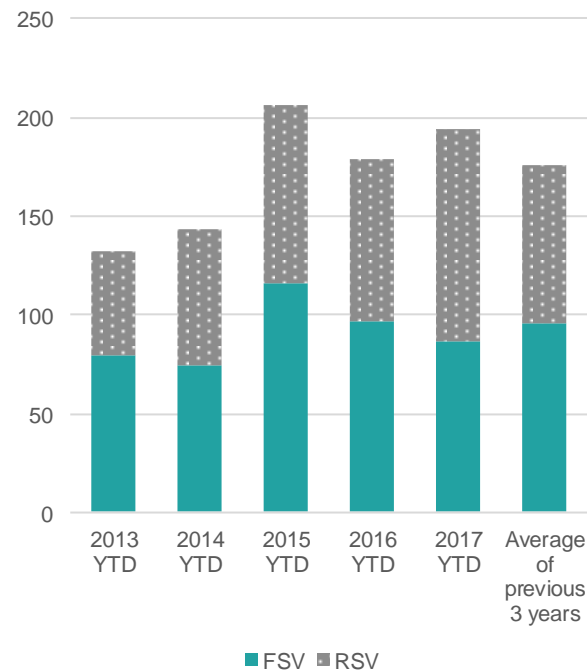


In brief

YTD	FSV	RSV	TSV
Visas	87	107	194
Change No.	- 10	25	15
Change Percent	-10%	30%	8%

Changes are from the YTD 2016 to the YTD 2017

Nelson: Cumulative FSV and RSV



Nelson: TSV by sector (\*)

	2014 YTD	2015 YTD	2016 YTD	2017 YTD	Change Number	Change Percentage
Schools	75	71	69	78	9	13%
ITP	46	115	98	100	2	2%
PTE	18	10	12	16	4	33%
Universities	4	10	-	-	-	-
Total	143	206	179	194	15	8%

Nelson: FSV by sector (\*)

	2014 YTD	2015 YTD	2016 YTD	2017 YTD	Change Number	Change Percentage
Schools	33	22	30	23	- 7	-23%
ITP	30	86	58	53	- 5	-9%
PTE	11	8	9	11	2	22%
Universities	-	-	-	-	-	-
Total	74	116	97	87	- 10	-10%

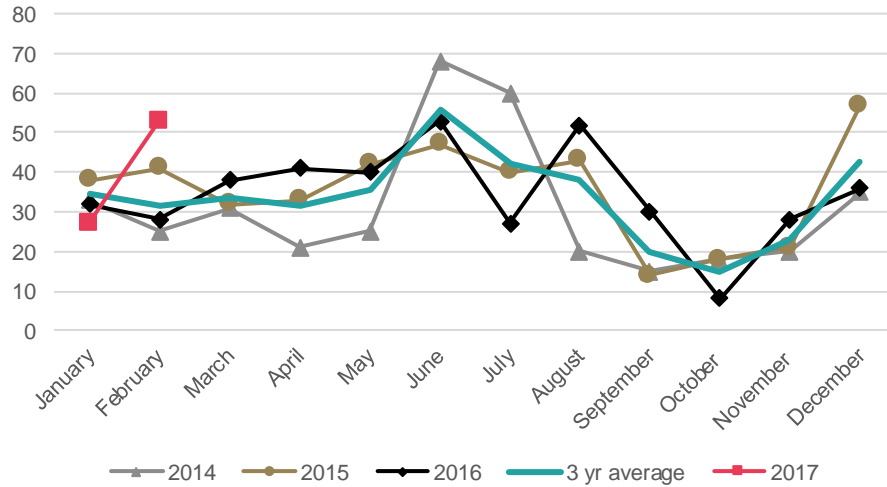
(\*) Please note that numbers by sector may not always add up to the same as the total because sector is not always stated.

Nelson: TSV by market

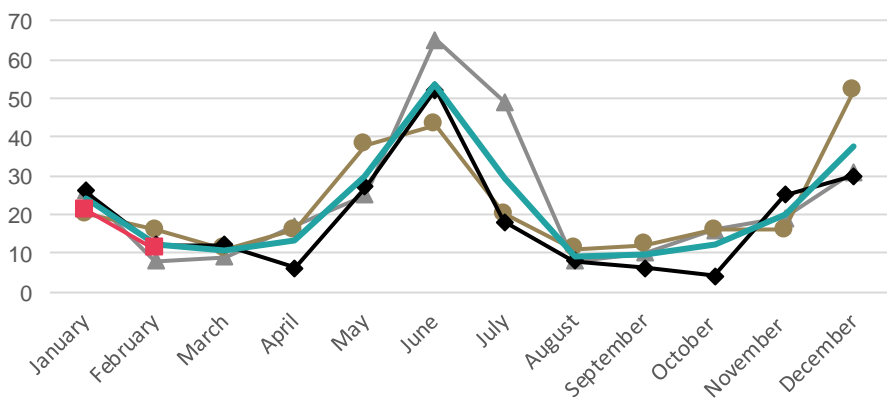
Country	2014 YTD	2015 YTD	2016 YTD	2017 YTD	Change Number	Change Percentage
India	15	69	43	33	- 10	-23%
Thailand	21	22	22	24	2	9%
China	13	25	16	45	29	181%
Japan	21	19	29	17	- 12	-41%
Brazil	18	4	2	8	6	300%
Other	55	67	67	67	-	0%
Total	143	206	179	194	15	8%

- There has been a 33%(+20) increase in TSV for Northland for the YTD 2017 compared to the YTD 2016. At this stage, there is not enough data to undertake further analysis.

Northland: TSV approved in 2014-2017



Northland: FSV approved in 2014-2017

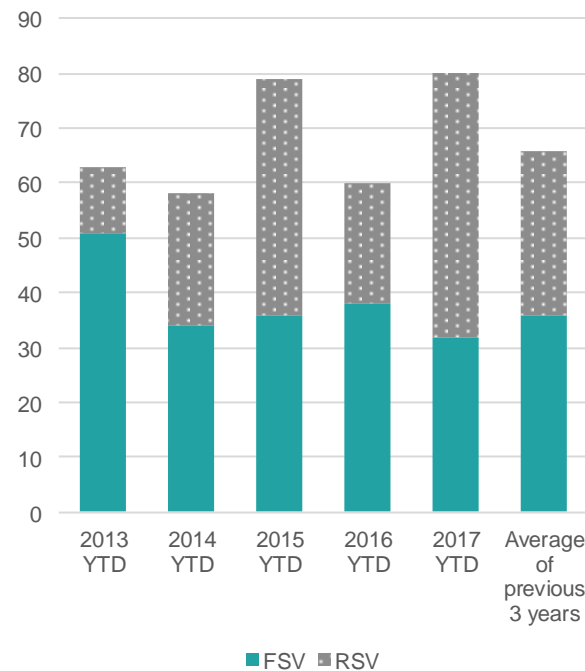


In brief

YTD	FSV	RSV	TSV
Visas	32	48	80
Change No.	- 6	26	20
Change Percent	-16%	118%	33%

Changes are from the YTD 2016 to the YTD 2017

Northland: Cumulative FSV and RSV



Northland: TSV by sector (\*)

	2014 YTD	2015 YTD	2016 YTD	2017 YTD	Change Number	Change Percentage
Schools	38	20	27	32	5	19%
ITP	18	57	33	48	15	45%
PTE	1	2	-	-	-	
Universities	1	-	-	-	-	
Total	58	79	60	80	20	33%

Northland: FSV by sector (\*)

	2014 YTD	2015 YTD	2016 YTD	2017 YTD	Change Number	Change Percentage
Schools	23	12	16	19	3	19%
ITP	9	22	22	13	- 9	-41%
PTE	1	2	-	-	-	
Universities	1	-	-	-	-	
Total	34	36	38	32	- 6	-16%

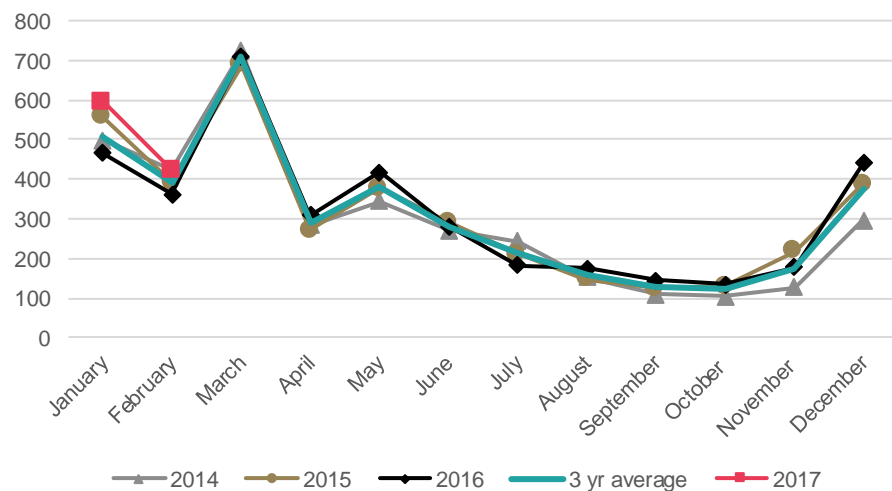
(\*) Please note that numbers by sector may not always add up to the same as the total because sector is not always stated.

Northland: TSV by market

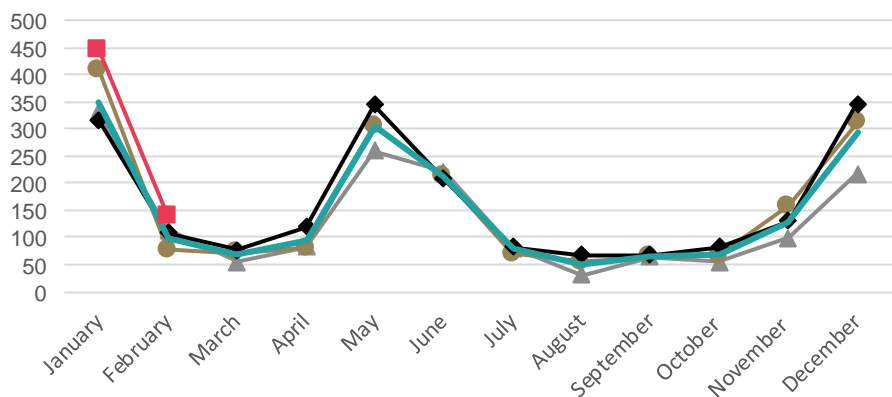
Country	2014 YTD	2015 YTD	2016 YTD	2017 YTD	Change Number	Change Percentage
China	10	37	17	33	16	94%
Brazil	10	2	6	-	- 6	-100%
India	5	16	12	12	-	0%
Korea	9	7	12	15	3	25%
Germany	3	3	4	4	-	0%
Other	21	14	9	16	7	78%
Total	58	79	60	80	20	33%

- TSV have increased by 23%(+189) for the YTD 2017 compared to the YTD 2016. This increase was in the universities sector, with most of the increase coming from FSV for students from the USA.
- The number of students in Otago with valid visas on 1 March 2017 was 3,823 was stable , declining by 1% (-35) compared to the same day in 2016.

Otago: TSV approved in 2014-2017



Otago: FSV approved in 2014-2017

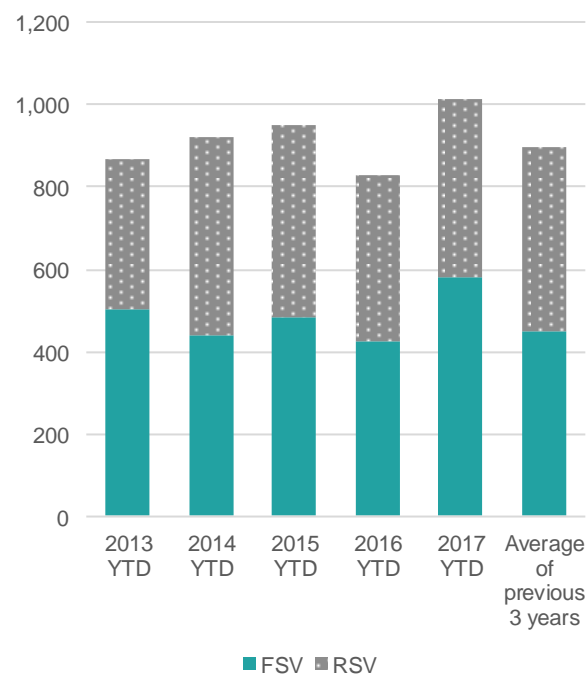


In brief

YTD	FSV	RSV	TSV
Visas	583	433	1,016
Change No.	160	29	189
Change Percent	38%	7%	23%

Changes are from the YTD 2016 to the YTD 2017

Otago: Cumulative FSV and RSV



Otago: TSV by sector (\*)

	2014 YTD	2015 YTD	2016 YTD	2017 YTD	Change Number	Change Percentage
Schools	109	111	92	116	24	26%
ITP	57	73	94	112	18	19%
PTE	5	7	3	3	-	0%
Universities	749	758	638	785	147	23%
Total	920	949	827	1,016	189	23%

Otago: FSV by sector (\*)

	2014 YTD	2015 YTD	2016 YTD	2017 YTD	Change Number	Change Percentage
Schools	38	37	46	66	20	43%
ITP	18	35	46	43	-3	-7%
PTE	1	3	1	2	1	100%
Universities	384	409	330	472	142	43%
Total	441	484	423	583	160	38%

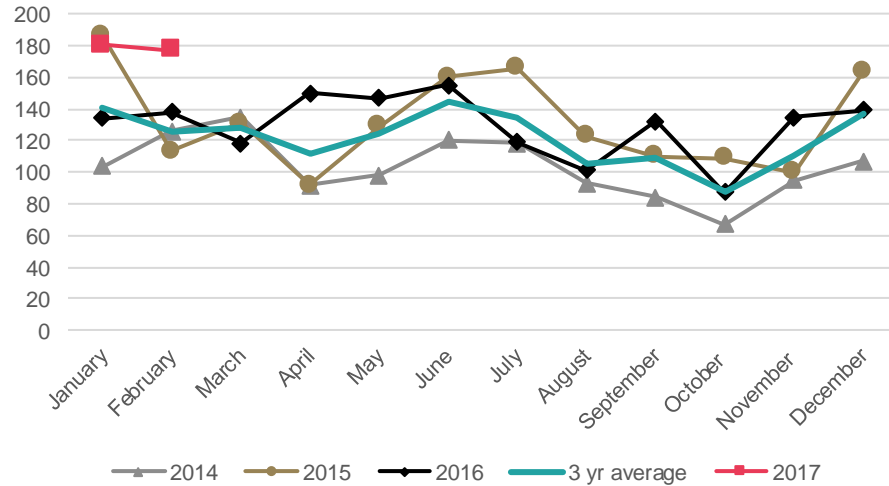
(\*) Please note that numbers by sector may not always add up to the same as the total because sector is not always stated.

Otago: TSV by market

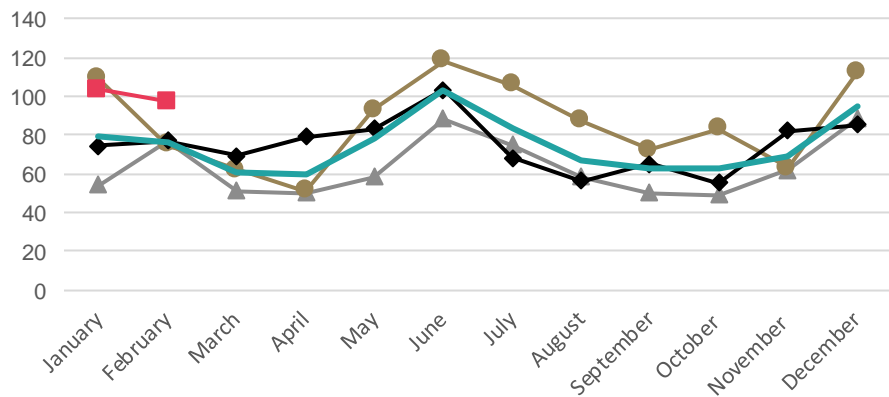
Country	2014 YTD	2015 YTD	2016 YTD	2017 YTD	Change Number	Change Percentage
USA	191	252	175	264	89	51%
China	160	167	170	194	24	14%
Malaysia	85	83	53	67	14	26%
Thailand	44	58	50	45	-5	-10%
India	23	40	51	62	11	22%
Other	418	349	328	384	56	17%
Total	921	949	827	1,016	189	23%

- TSV have increased by 31%(+ 85) for the YTD 2017 compared to the YTD 2016, driven by an increase in FSV(+32%, +49) for the ITP and PTE sectors.
- Southland has 1,253 VSV on 1 March 2017, an increase of 35%(+ 322) since the same date last year.

Southland: TSV approved in 2014-2017



Southland: FSV approved in 2014-2017

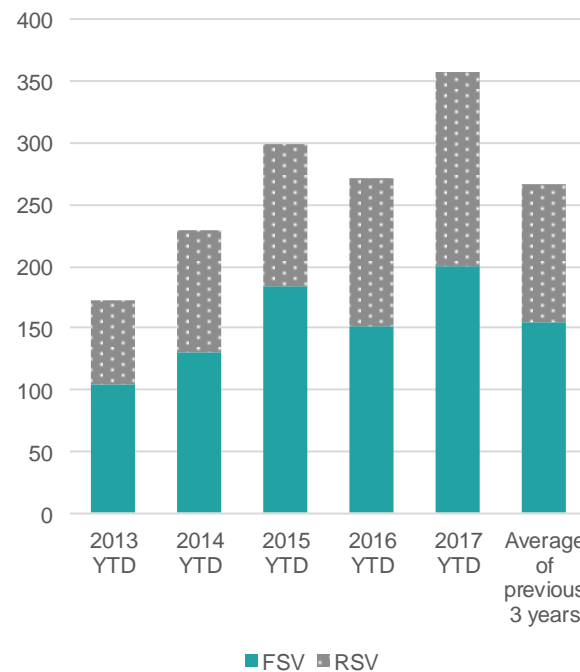


In brief

YTD	FSV	RSV	TSV
Visas	200	157	357
Change No.	49	36	85
Change Percent	32%	30%	31%

Changes are from the YTD 2016 to the YTD 2017

Southland: Cumulative FSV and RSV



Southland: TSV by sector (\*)

	2014 YTD	2015 YTD	2016 YTD	2017 YTD	Change Number	Change Percentage
Schools	61	68	46	37	- 9	-20%
ITP	121	159	158	216	58	37%
PTE	47	68	64	104	40	63%
Universities	1	4	4	-	- 4	-100%
Total	230	299	272	357	85	31%

Southland: FSV by sector (\*)

	2014 YTD	2015 YTD	2016 YTD	2017 YTD	Change Number	Change Percentage
Schools	28	30	12	9	- 3	-25%
ITP	66	93	76	94	18	24%
PTE	36	58	60	97	37	62%
Universities	1	3	3	-	- 3	-100%
Total	131	184	151	200	49	32%

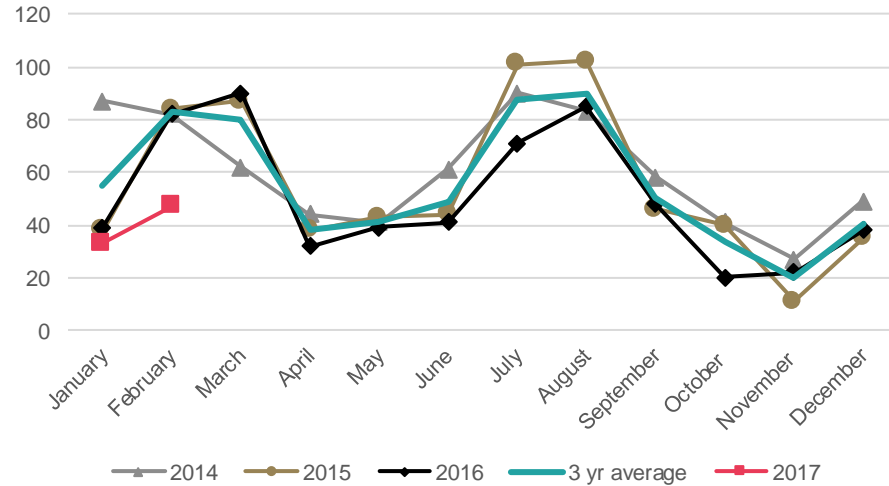
(\*) Please note that numbers by sector may not always add up to the same as the total because sector is not always stated.

Southland: TSV by market

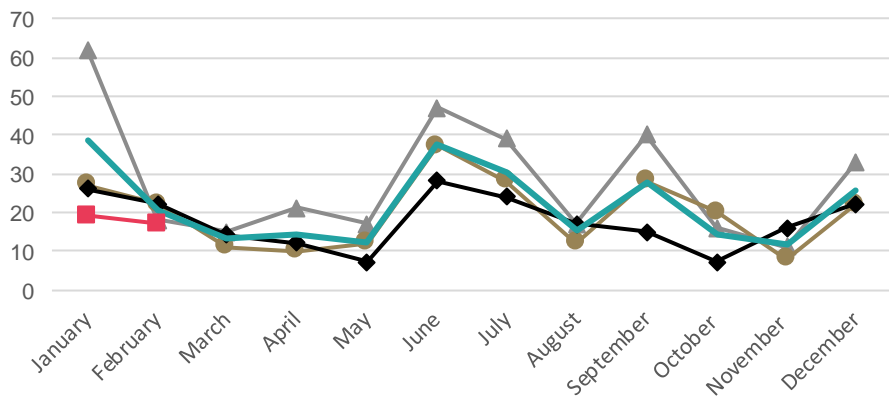
Country	2014 YTD	2015 YTD	2016 YTD	2017 YTD	Change Number	Change Percentage
China	57	61	60	80	20	33%
Thailand	41	41	41	25	- 16	-39%
India	33	51	27	34	7	26%
Brazil	10	38	17	40	23	135%
Korea	18	17	29	34	5	17%
Other	71	91	98	144	46	47%
Total	230	299	272	357	85	31%

- TSV have decreased by 34%(- 41) for the 2017 YTD compared to the YTD 2016. At this stage, there is not enough data to undertake further analysis.

Taranaki: TSV approved in 2014-2017



Taranaki: FSV approved in 2014-2017

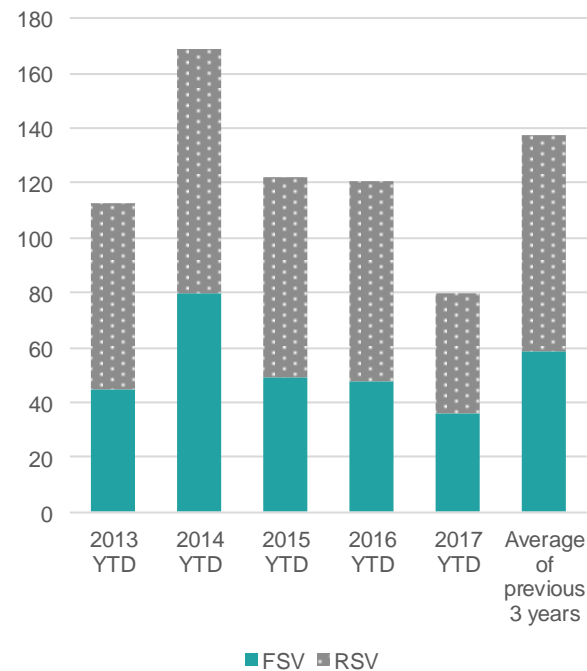


In brief

YTD	FSV	RSV	TSV
Visas	36	44	80
Change No.	- 12	- 29	- 41
Change Percent	-25%	-40%	-34%

Changes are from the YTD 2016 to the YTD 2017

Taranaki: Cumulative FSV and RSV



Taranaki: TSV by sector (\*)

	2014 YTD	2015 YTD	2016 YTD	2017 YTD	Change Number	Change Percentage
Schools	43	13	20	20	-	0%
ITP	32	28	30	19	- 11	-37%
PTE	94	81	71	41	- 30	-42%
Universities	-	-	-	-	-	
Total	169	122	121	80	- 41	-34%

Taranaki: FSV by sector (\*)

	2014 YTD	2015 YTD	2016 YTD	2017 YTD	Change Number	Change Percentage
Schools	21	7	12	10	- 2	-17%
ITP	20	20	14	11	- 3	-21%
PTE	39	22	22	15	- 7	-32%
Universities	-	-	-	-	-	
Total	80	49	48	36	- 12	-25%

(\*) Please note that numbers by sector may not always add up to the same as the total because sector is not always stated.

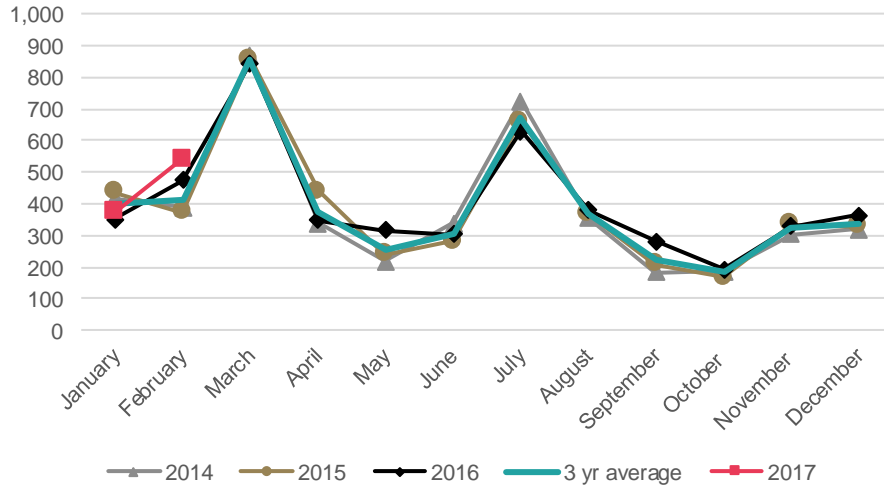
Taranaki: TSV by market

Country	2014 YTD	2015 YTD	2016 YTD	2017 YTD	Change Number	Change Percentage
India	64	51	46	33	- 13	-28%
China	23	15	20	13	- 7	-35%
Korea	26	19	10	1	- 9	-90%
Viet Nam	7	8	6	5	- 1	-17%
Thailand	6	-	5	6	1	20%
Other	43	29	34	22	- 12	-35%
Total	169	122	121	80	- 41	-34%

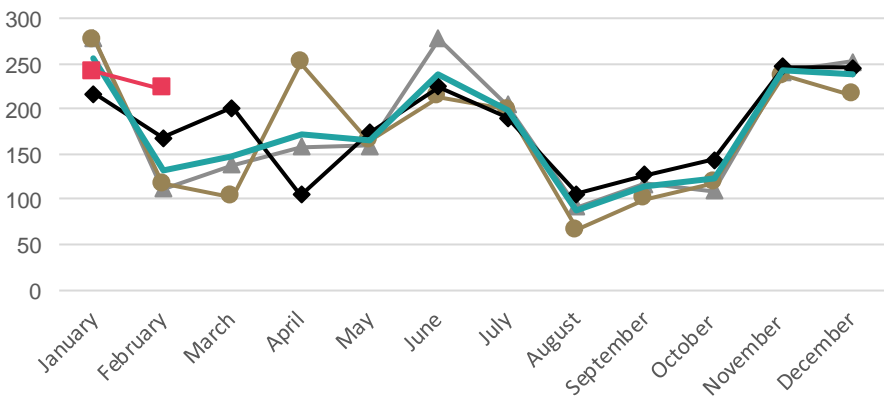


- TSV increased by 10%(+86) for the YTD 2017, when compared to YTD 2016. This was led by an increase in FSV for the universities sector, and TSV for the schools sector.
- VSV for this region was 4,419 on 1 March 2017, an increase of 5% (+215) since the same date in 2016.

Waikato: TSV approved in 2014-2017



Waikato: FSV approved in 2014-2017

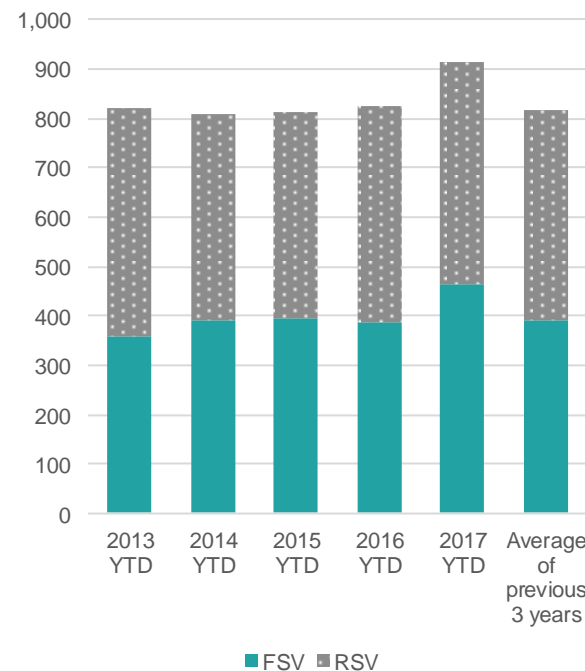


In brief

YTD	FSV	RSV	TSV
Visas	463	449	912
Change No.	78	8	86
Change Percent	20%	2%	10%

Changes are from the YTD 2016 to the YTD 2017

Waikato: Cumulative FSV and RSV



Waikato: TSV by sector (\*)

	2014 YTD	2015 YTD	2016 YTD	2017 YTD	Change Number	Change Percentage
Schools	161	130	114	173	59	52%
ITP	222	245	270	308	38	14%
PTE	84	104	87	69	- 18	-21%
Universities	340	329	355	362	7	2%
Total	807	808	826	912	86	10%

Waikato: FSV by sector (\*)

	2014 YTD	2015 YTD	2016 YTD	2017 YTD	Change Number	Change Percentage
Schools	57	40	34	69	35	103%
ITP	101	134	155	172	17	11%
PTE	67	91	67	52	- 15	-22%
Universities	162	125	129	170	41	32%
Total	387	390	385	463	78	20%

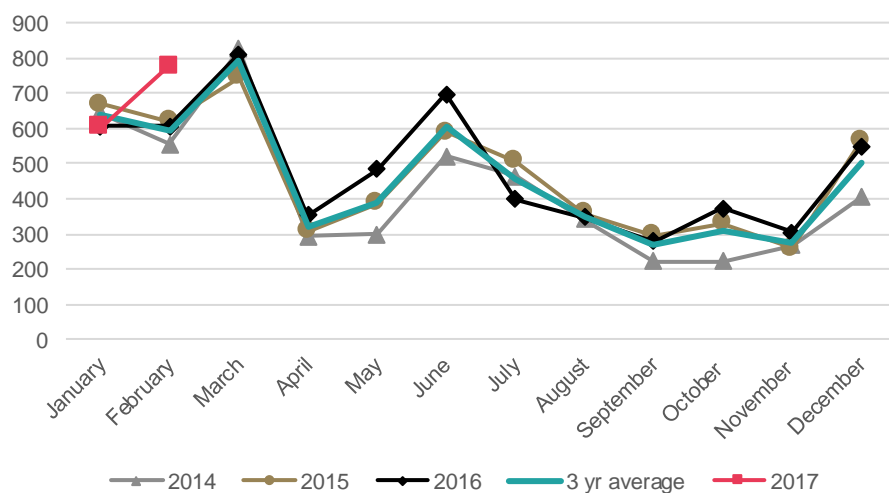
(\*) Please note that numbers by sector may not always add up to the same as the total because sector is not always stated.

Waikato: TSV by market

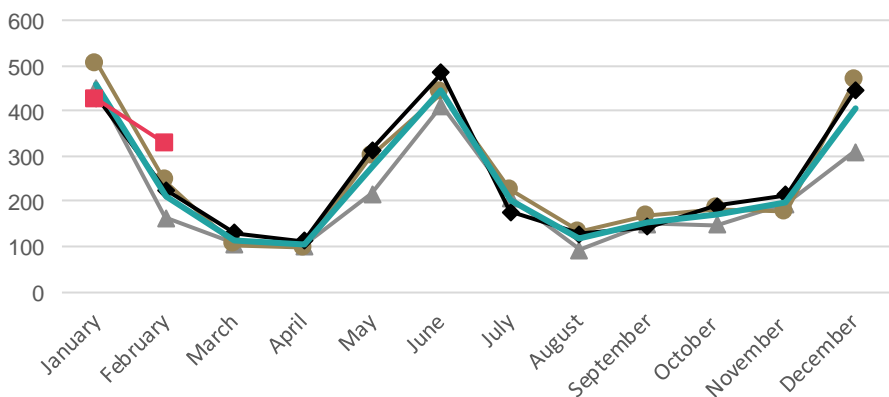
Country	2014 YTD	2015 YTD	2016 YTD	2017 YTD	Change Number	Change Percentage
China	267	237	297	330	33	11%
India	84	124	129	184	55	43%
UK	45	50	39	18	- 21	-54%
Korea	51	33	29	33	4	14%
Saudi Arabia	37	62	14	9	- 5	-36%
Other	325	305	318	338	20	6%
Total	809	811	826	912	86	10%

- There was a 14%(+170) increase in TSV, led by increased FSV in the universities sector. The biggest increase in FSV for this sector was from Viet Nam (+173%, +43). The schools sector has also increased.
- VSV for this region were 5,747 for 1 March 2017, an increase of 13%(+ 668) from the same date in 2016.

Wellington: TSV approved in 2014-2017



Wellington: FSV approved in 2014-2017

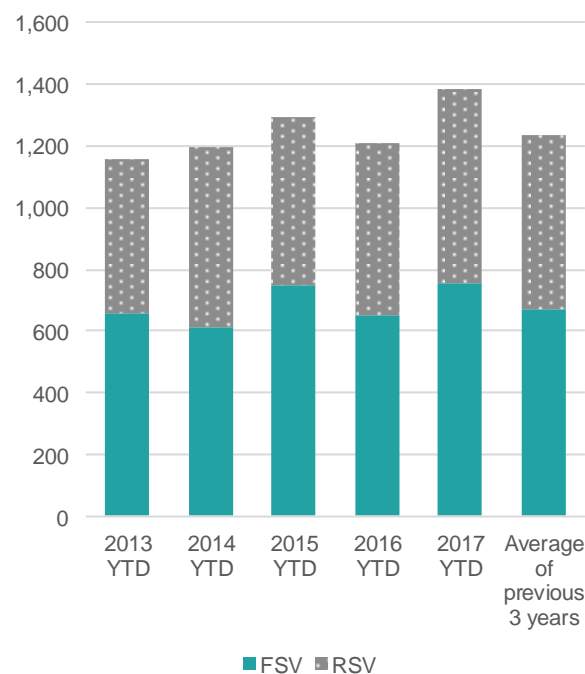


In brief

YTD	FSV	RSV	TSV
Visas	752	629	1,381
Change No.	99	71	170
Change Percent	15%	13%	14%

Changes are from the YTD 2016 to the YTD 2017

Wellington: Cumulative FSV and RSV



Wellington: TSV by sector (\*)

	2014 YTD	2015 YTD	2016 YTD	2017 YTD	Change Number	Change Percentage
Schools	216	168	121	189	68	56%
ITP	159	225	250	263	13	5%
PTE	88	133	89	117	28	31%
Universities	731	762	748	810	62	8%
Total	1,194	1,288	1,208	1,379	171	14%

Wellington: FSV by sector (\*)

	2014 YTD	2015 YTD	2016 YTD	2017 YTD	Change Number	Change Percentage
Schools	136	64	66	98	32	48%
ITP	90	146	144	148	4	3%
PTE	47	93	53	68	15	28%
Universities	337	443	388	437	49	13%
Total	610	746	651	751	100	15%

(\*) Please note that numbers by sector may not always add up to the same as the total because sector is not always stated.

Wellington: TSV by market

Country	2014 YTD	2015 YTD	2016 YTD	2017 YTD	Change Number	Change Percentage
China	316	365	402	410	8	2%
USA	123	170	119	140	21	18%
India	96	149	116	143	27	23%
Viet Nam	83	75	65	109	44	68%
Japan	70	75	74	76	2	3%
Other	508	457	435	503	68	16%
Total	1,196	1,291	1,211	1,381	170	14%