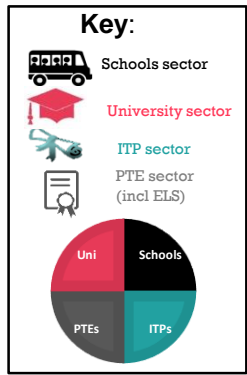
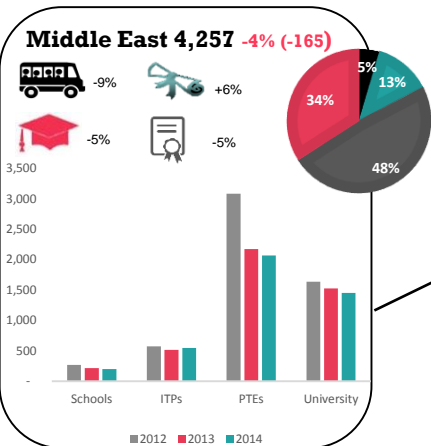


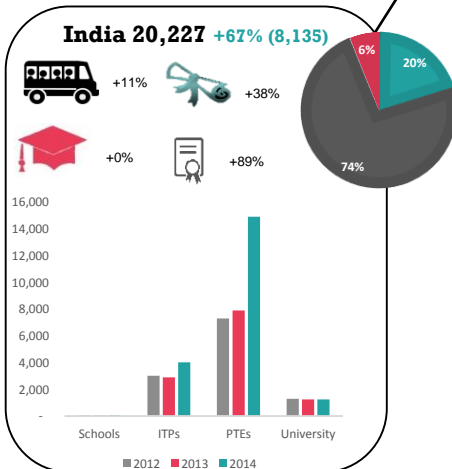
Trends by country: Full year 2014



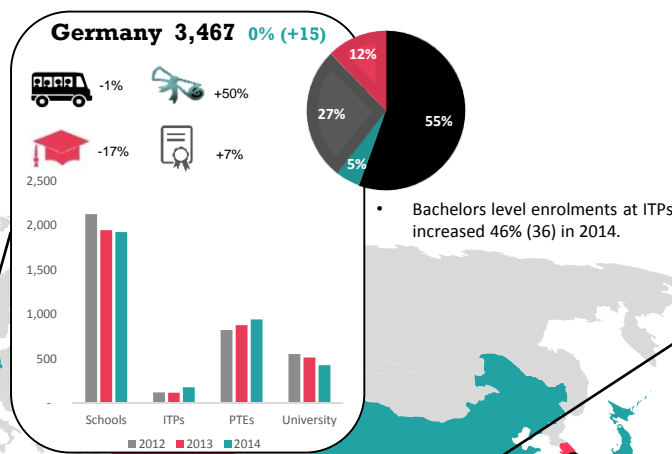
Proportion of enrolments by sector



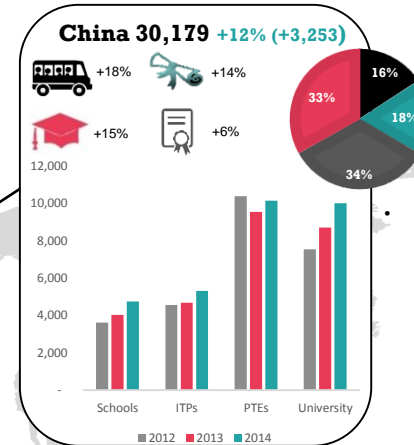
- Saudi enrolments in graduate certs/dips at ITPs increased 110% (44) in 2014.



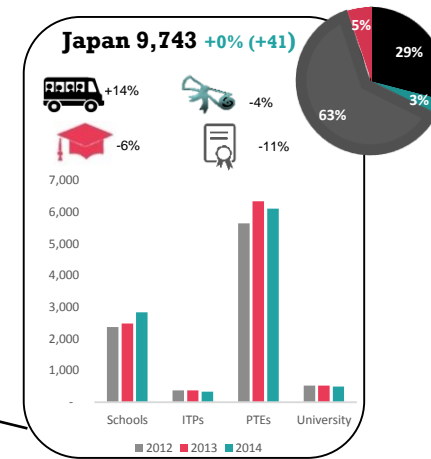
- Enrolments in honours degrees at ITPs increased 109% (255) in 2014.



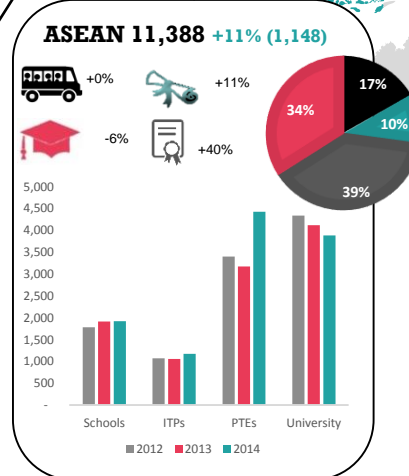
- Bachelors level enrolments at ITPs increased 46% (36) in 2014.



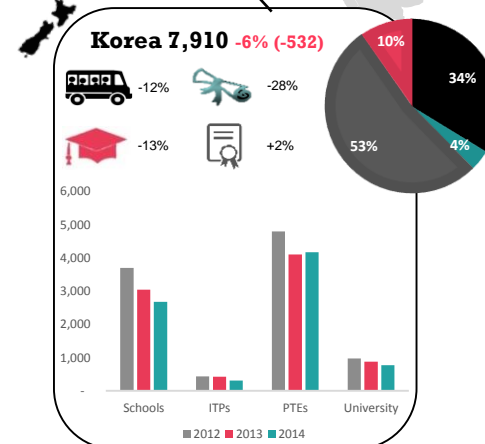
- University enrolments at the Masters level increased 43% (470) in 2014.



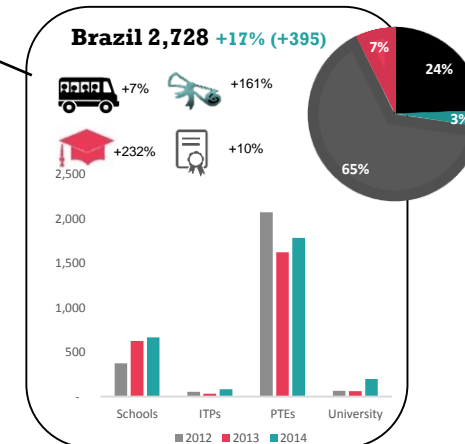
- Secondary school enrolments increased 15% (348) in 2014.



- Indonesian student enrolment increased by 16% (119) in 2014.



- Student enrolments increased by 15% (162) in the last trimester of 2014.



- University enrolments at the bachelor degree level increased 487% (112) in 2014.